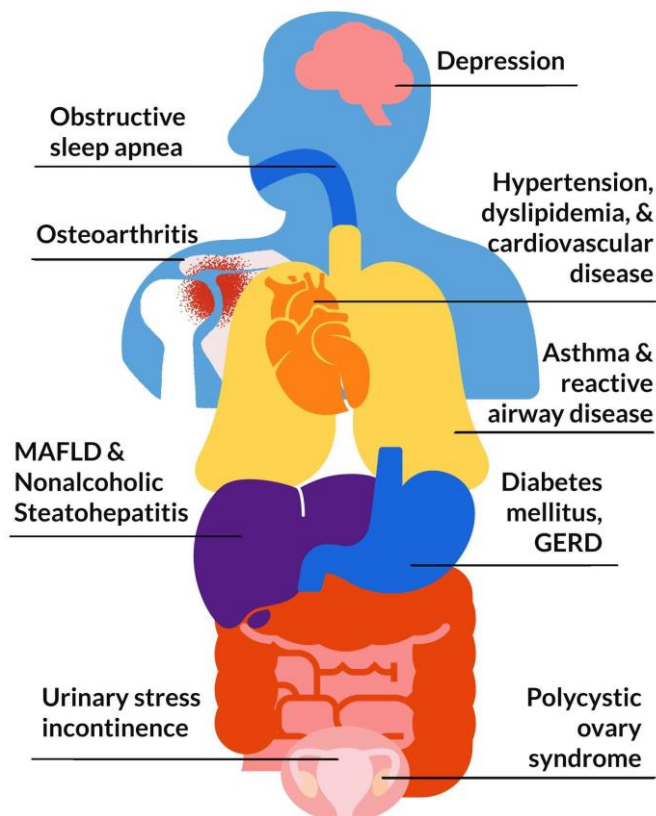




STUDY GUIDE

2024-2025



Program: MBBS
Year: 5th Professional Year
Subject: Medicine
Batch No: M-20
Session: 2024-2025

Content

1. Introduction to Study Guide

- Objectives of the Study Guide.....1

2. Avicenna Medical & Dental College Overview

- Institutional Organogram.....2
- Vision and Mission.....2
- Messages:from the Principal.....3
- 7-Star Doctor Competencies (PMDC).....4
- About Medical College.....4

3. Department & Subject Overview

- Note from the Head of Department.....5
- Departmental Organogram.....5
- Faculty Members.....6
- Goal of the Department6
- Course Objectives.....7
- Attendance Requirement & Internal Assessment Criteria.....7

4. Learning Resources & Pedagogy

- Book Recommendations.....8
- Teaching Methodologies.....8
- Infrastructure Resources.....10
- Digital Library & Learning Management System.....12

5. Assessment Guideline

- Internal Assessment.....15
- External Assessment.....17
- Sample Questions.....18

6. Curriculum Details

- Curriculum Framework & Allocation of hours.....21
- Curricular Map & Rationale.....22
- Learning Outcomes & Table of Specifications (TOS).....27
- Academic Calendar / Annual Planner.....
- Block Timetable.....
- Test Schedules.....
- Pre-Clinical / Clinical / Ward Rotations / Community Visits Plan.....
- UHS Syllabus and Statutes.....

Avicenna Medical & Dental College

7. Student's Policy

- Refer to Policy Manual.....

Introduction to Study Guide

Welcome to the Avicenna Medical & Dental College Study Guide!

This guide serves as your essential resource for navigating the complexities of your dental education at Avicenna Medical & Dental College. It integrates comprehensive details on institutional framework, curriculum, assessment methods, policies, and resources, all meticulously aligned with UHS, PMDC and HEC guidelines.

Each subject-specific study guide is crafted through a collaborative effort between the Department of Medical Education and the respective subject departments, ensuring a harmonized and in-depth learning experience tailored to your academic and professional growth.

Objectives of the Study Guide



1. Institutional Understanding:

- Gain insight into the college's organizational structure, vision, mission, and graduation competencies as defined by PMDC, setting the foundation for your educational journey.

2. Effective Utilization:

- Master the use of this guide to enhance your learning, understanding the collaborative role of the Department of Medical Education and your subject departments, in line with PMDC standards.

3. Subject Insight:

- Obtain a comprehensive overview of your courses, including detailed subject outlines, objectives, and departmental structures, to streamline your academic planning.

4. Curriculum Framework:

- Explore the curriculum framework, academic calendar, and schedules for clinical and community rotations, adhering to the structured guidelines of UHS & PMDC.

5. Assessment Preparation:

- Familiarize yourself with the various assessment tools and methods, including internal exam and external exam criteria, and review sample papers to effectively prepare for professional exams.

6. Policies and Compliance:

- Understand the institutional code of conduct, attendance and assessment policies, and other regulations to ensure adherence to college standards and accrediting body requirements.

7. Learning Resources:

- Utilize the learning methodologies, infrastructure resources, and Learning Management System to maximize your educational experience and academic success.

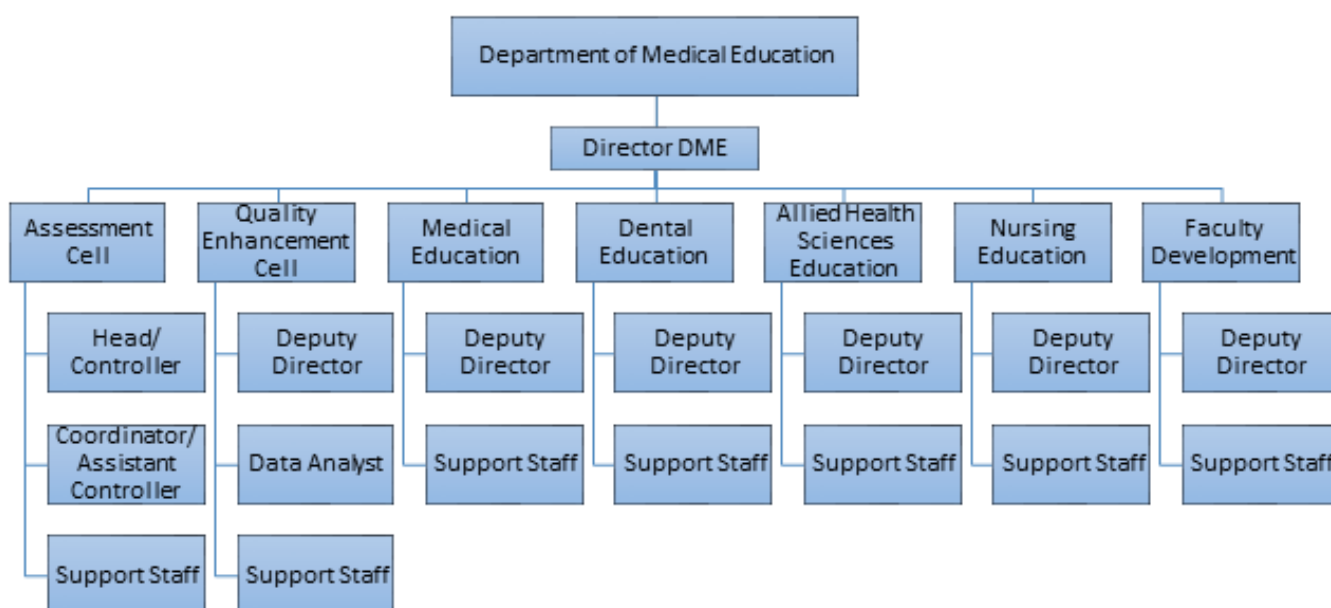
This guide, meticulously developed in collaboration with your subject departments, is designed to support your academic journey and help you achieve excellence in accordance with the highest standards set by PMDC and HEC.

DEPARTMENT OF MEDICAL EDUCATION

The Department of Medical Education (DME) serves as a cornerstone in delivering effective and high-quality education to both undergraduate and postgraduate medical and dental students. The DME is integral to the implementation and adoption of the latest curriculum provided by UHS and is responsible for organizing and managing related academic activities.

The DME will oversee the spirals of PERLs and C-FRC and monitor students' portfolio development and logbook completion. Additionally, the department is developing a mentoring platform and plans to initiate faculty development training which will focus on mentorship, reflective writing, and portfolio development skills. DME has a duty to collaborate with other disciplines to ensure that AVMDC students are not only competent in their respective fields but also well-trained in affective domains such as professionalism, ethics, research, and leadership.

A key responsibility of the DME is to plan and implement an effective training competency acquisition framework in collaboration with the academic council.



General Responsibilities of DME include:

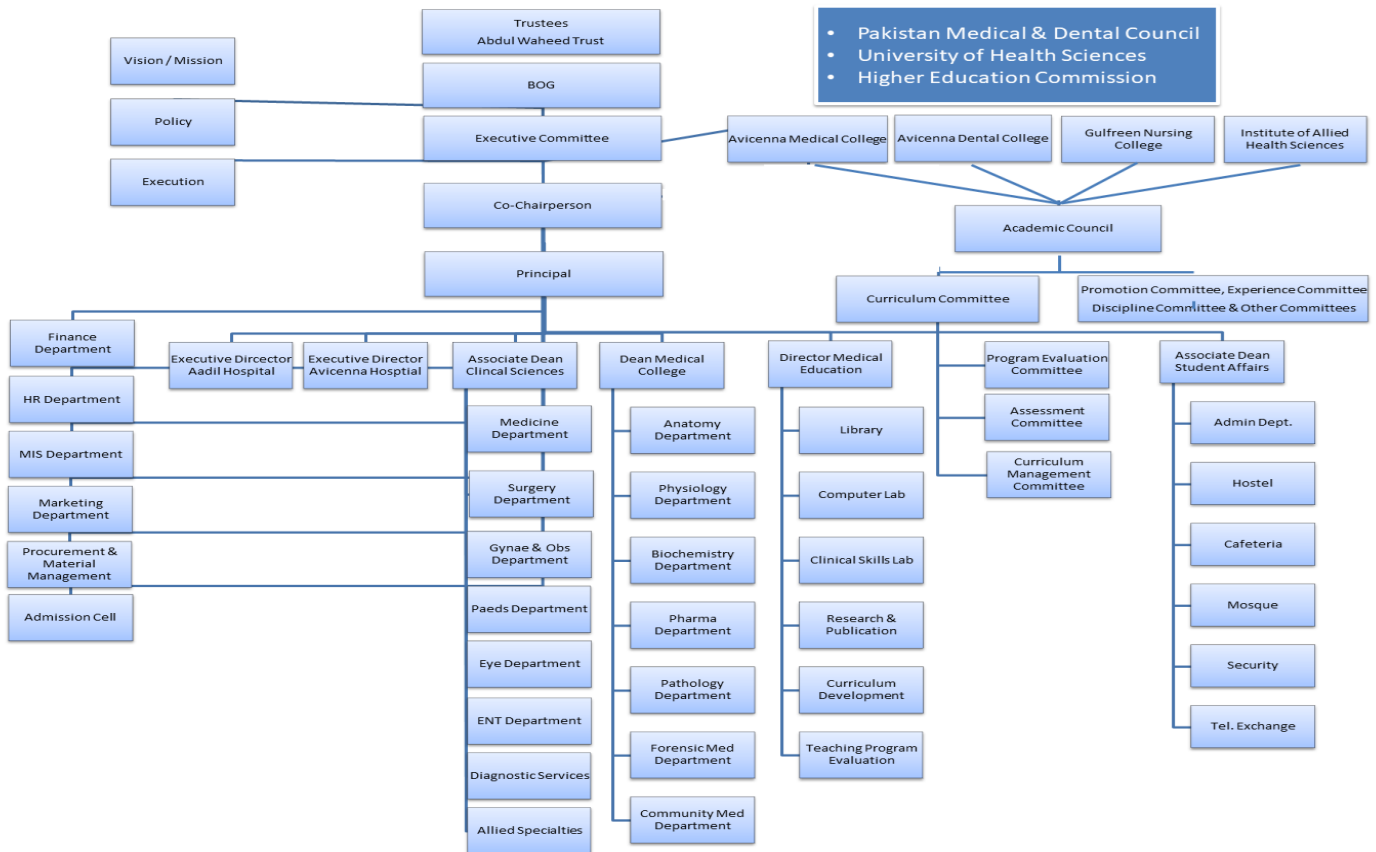
- Contribute and design, train the trainer activities which fulfill the need for undergraduate and postgraduate training.
- Shape and develop medical education research activities of the college.
- Facilitating & organizing workshops, seminars, symposia & conferences.
- Conducting CME activities to leverage culture of awareness, journal club.
- Networking by representing the college, when needed, in national /international meetings or conferences.
- Student counseling.
- Supervising students' academic progress.
- Academic Committees Development and Support.
- Staff Support and Development.
- Curriculum development and reform.
- Collaborate with curriculum committee and faculty members to develop quality instructional material such as modules, lecture, or study guides.

- Standard Operating Procedures for DME development.
- Skill lab management.
- Assessment analysis which includes blue printing, pre-exam review, item analysis and standard setting and provides feedback to concerned faculty and students on the learning outcome achievement.
- Develop and conduct periodical review of process of the program, learning and teaching activities, and assessment process.
- Identify opportunities for use of IT in teaching and learning, assessment and faculty development activities.
- Exam Cell management.
- Quality Assurance Cell management.
- Record keeping of departmental data.
- Leadership and management.
- Participation in overall planning and management of teaching in liaison with the departments.

Faculty	Department
Assistant Director / Assistant Professor Medical Education	Dr. Saman Fatima
Coordinator Medical Education	Dr. Javaid Shabkhaiz Rab
Deputy Director / Demonstrator Dental Education	Dr. Salar Arsalan
Deputy Director / Demonstrator Allied Health Sciences	Dr. Talha
Deputy Director / Demonstrator Nursing Education	Dr. Muneeba

Avicenna Medical & Dental College Overview

Institutional Organogram



Vision & Mission



Avicenna Medical & Dental College



Vision

The vision of **Avicenna Medical & Dental College** is to become a college that thrives to achieve improvement in healthcare of masses through creative delivery of educational programs, innovative research, commitment to public service and community engagement in a environment that supports diversity, inclusion, creative thinking, social accountability, life-long learning and respect for all.

Mission

The mission of **Avicenna Medical and Dental College** is to educate and produce competent, research oriented healthcare professionals with professional commitment and passion for life-long learning from a group of motivated students through quality education, research and service delivery for the

Message from the Chairman



The Avicenna Medical & Dental College is a project of Abdul Waheed Trust which is a Non-profitable, Non-governmental, Non-political & Social organization, working for the welfare of Humanity and based on Community empowerment. Avicenna Medical College has its own 530 bedded Avicenna teaching Hospital (Not for Profit hospital) within the College Campus & 120 bedded Civil Hospital, at 15 minutes distance from the main campus.

Message from the Principal

Prof. Dr. Gulfreen Waheed
Principal Medical College
MBBS, FCPS, MHPE, PHD Scholar, (HPE)

Internet & online Journals
particularly pleased with the
results for all the classes. It is
his Goodness prevails and
values and ethical values.

Avicenna Medical College & Hospital was founded to provide quality health care services to the deserving patients belonging to the rural areas near Avicenna Hospital as well as to provide quality medical education of international standard to our students. The Hospital provides all medical services and Lab diagnostics to the local population at minimal cost. So far by the grace of Allah Almighty the number of patients being treated and operated upon at our Hospital is increasing every day as there is no other public or charity hospital in the circumference of 20km. We have already established two Satellite Clinics in the periphery which are providing outdoor care while admission cases are brought to the Hospital in Hospital transport.

Following the success of our reputable Medical College and Hospital, we were able to successfully establish Avicenna Dental College which is recognized by the Pakistan medical & Dental Council & University of Health Sciences. To date, we have enrolled five batches in our dental college and we aim to achieve the same level of success for our dental students as our medical students.

Chairman

Abdul Waheed Sheikh
Avicenna Medical & Dental College



As a Co-Founder and Co-Chairperson, I have been involved in planning, construction and accreditation of Avicenna Medical College by the Pakistan Medical and Dental Council (PM&DC) and its affiliation with the esteemed University of Health Sciences (UHS). It is a pleasure to see Avicenna Medical College develop, progress and achieve maximum academic excellence in a short period since its inception in 2009. The institution has lived up to its mission of training and producing medical graduates of international standards. Three batches have passed out as Doctors, who currently are serving in the country and abroad while several have opted for post-graduation and are on road to progress. We have achieved several milestones since 2009 including the recognition of our College for FCPS training by College of Physicians and Surgeons of Pakistan (CPSP), establishment of College of Nursing and Avicenna Dental College.

7-Star Doctor Competencies (PMDC)

According to national regulatory authority PMDC, a Pakistani medical/dental graduate who has attained the status of a 'seven-star doctor' is expected to demonstrate a variety of attributes within each competency. These qualities/ generic competencies are considered essential and must be exhibited by the individual professionally and personally.

1. Skillful / Care Provider.
2. Knowledgeable / Decision Maker.
3. Community Health Promoter / Community Leader.
4. Critical Thinker / Communicator
5. Professional / Lifelong learner.
6. Scholar / Researcher
7. Leader/ Role Model / Manager



About Avicenna Medical College

Avicenna Medical & Dental College is a purpose-built, fully equipped institution with experienced and excellence-driven faculty to train high-quality dental professionals in Pakistan.

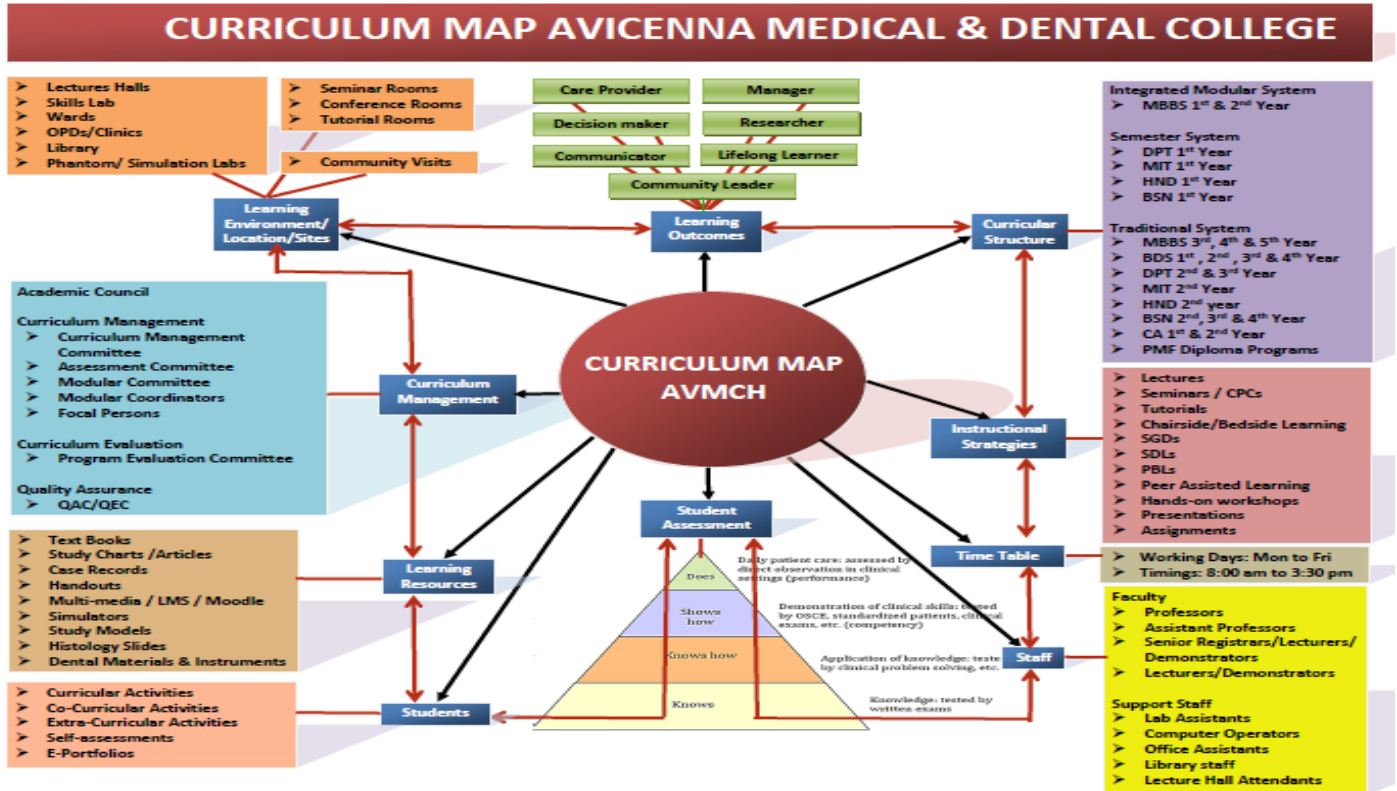
Avicenna Medical & Dental College runs under the umbrella of Abdul Waheed Trust. Abdul Wahid Trust is a non-profit social welfare organization and registered under the Societies Act with the Registrar of Societies. The Trust is legalized through a Trust Deed that bears necessary rectifications. The Trust Deed is further supported by its Memorandum and Article of Association that authorizes the establishment and operation of the Medical College, the Dental College, the Nursing College, the Allied Health Sciences College, and other activities in the healthcare sector.

In 2009, Avicenna Medical & Dental College was recognized by the Pakistan Medical & Dental Council. With the advent of advanced tools and technology in every field of health science, medicine today has shot up to the greater end of the gamut with superior choice and promises in medical therapy in the very vicinity of the common man. AVMDC promises to be one such neighborhood.



Curricular Map

This pictorial, vertical and horizontal presentation of the course content and extent shows the sequence in which various systems are to be covered. Curricular map to cover all the subjects and modules and the time allocated to study of the systems for the undergraduate programs offered at four colleges at campus are as follows:



Department & Subject Overview

Note from the Head of Department



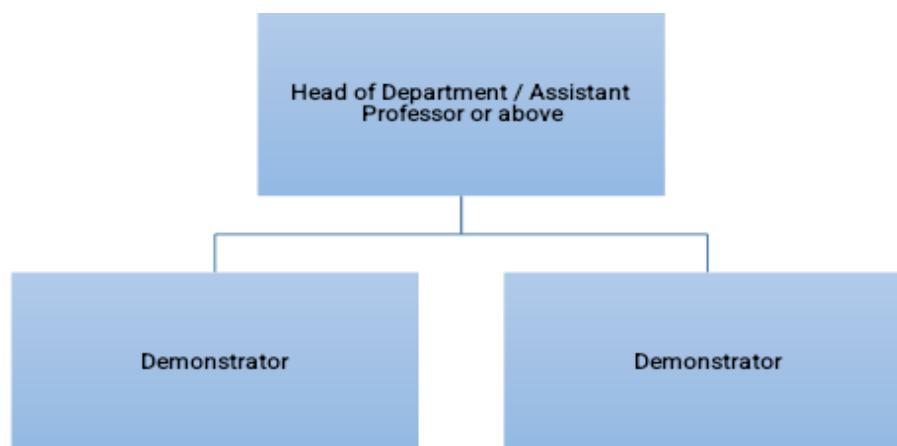
The Department of Medicine is equipped with diagnostic facilities like ECG, Tread Mill CT Scan, USG, Echocardiography & automated lab support. Nephrology center has hemodialysis units. Pre-& post-op facilities are available for preparation of a patient for kidney transplant.

Gastroenterology Center has provision of gastrointestinal endoscopy for investigation of GIT disorders. Special clinics including Diabetes Control Center, Hypertension Control & Ischemic Heart Disease Center, Bronchial Asthma Clinic, Thyroid Clinic & Liver Disease Clinic are part and parcel of Medicine Department. Pre-clinical students are exposed to these commonly occurring diseases once they have gone through basic sciences.

Departmental Organogram (as per PMDC guidelines)

PROFESSOR DR. MAZAMIR SHANZAD

MBBS, FCPS, CHPE, FRCP(London)



Staff: Floor Supervisors

Nursing Staff

Ward boys

Faculty Members

Name	Designation	Qualification
Professor Dr Muzamul Shehzad	Head of Department	MBBS FCPS FRCP CHPE
Prof Dr Waheed Ahmad	Professor	MBBS FCPS
Prof Dr Amina Hussain	Professor	MBBS FCPS
Dr Shamshad Ali	Associate Professor	MBBS FCPS(Pulmo)
Dr Asim Maqsood	Assistant Professor	MBBS MRCP(UK)
Dr Usman Yaqub	Senior Registrar	MBBS FCPS
Dr Humaira Mubeen Afzal	Senior Registrar	MBBS FCPS
Dr Muhammad Asad Raza	Senior Registrar	MBBS MRCP(UK) CHPE
Dr Imran Sheikh	Senior Registrar	MBBS FCPS

Goal of the Department

Course Objectives

Students should be able to describe the pathophysiology, clinical presentation, diagnostic criteria, and management strategies for common diseases in internal medicine.

Students should demonstrate understanding of the pharmacological principles, indications, contraindications, and side effects of commonly used medications in internal medicine.

Students should be able to interpret clinical data, including laboratory results, imaging studies, and clinical examination findings, to make accurate diagnoses.

Students should develop clinical reasoning skills to formulate differential diagnoses and treatment plans based on evidence-based guidelines.

Students should be proficient in performing comprehensive physical examinations, including cardiovascular, respiratory, abdominal, and neurological examinations.

Students should be able to identify and describe abnormal physical findings and correlate them with potential diagnoses.

Students should demonstrate competence in basic medical procedures, such as venipuncture, intravenous annulation, ECG interpretation, and the management of medical emergencies.

Students should be able to effectively communicate with patients, families, and healthcare teams, including delivering clear and compassionate explanations of diagnoses, treatment options, and prognosis.

Students should develop skills in obtaining informed consent and delivering bad news in a sensitive manner.

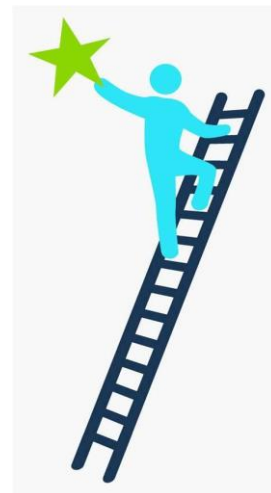
Students should demonstrate professionalism in all interactions, adhering to ethical principles, confidentiality, and patient-centered care.

Students should reflect on their own biases and the impact these may have on patient care, striving for culturally competent and equitable healthcare delivery.

Students should develop a habit of continuous learning, staying updated with the latest medical research and guidelines.

Attendance Requirement & Internal Assessment Criteria

The institution follows the regulations for examinations of the UHS in letter and spirit. The students require **85% attendance** in all academic sessions and **50% marks** in internal assessments and send-up examinations to be eligible for the UHS Professional Examinations.



Learning Resources & Pedagogy

Book Recommendations



Sr.	Book Name	Author	Edition
1.	Davidson Principles and Practice of Medicine	Sir laybourne Patrick davidson	24 th Edition
2.	Kumar & Clarks Clinical Medicine	Adem Feather, David Randell	11 th Edition
3.	Hutichsons clinical methods	Mitchell Swash	25 th Edition
4.	Basic psychiatry	Myre Smith	3 rd Edition
5.	Oxford textbook of psychiatry	David Semple	4 th Edition
6.	ABC dermatology	Rachael Morrison	6 th Edition
7.	Online Journals	HEC library	

Traditional & Innovative Teaching Methodologies



Sr.	Pedagogical Methodologies	Description
1.	Lectures	<p>Traditional method where an instructor presents information to a large group of students (large group teaching).</p> <p>This approach focuses on delivering theoretical knowledge and foundational concepts. It is very effective for introducing new topics.</p>
2.	Tutorial	<p>Tutorials involve small group discussion (SGD) where students receive focused instruction and guidance on specific topics.</p>
3	Demonstrations	<p>Demonstrations are practical displays of techniques or procedures, often used to illustrate complex concepts or practices, particularly useful in dental education for showing clinical skills.</p>
4	Practicals	<p>Hands-on sessions where students apply theoretical knowledge to real-world tasks. This might include lab work, clinical procedures, or simulations.</p> <p>Practicals are crucial for developing technical skills and understanding the application of concepts in practice.</p>
5.	Student Presentations	<p>Students prepare and deliver presentations on assigned topics. This method enhances communication skills, encourages students to explore topic in-depth. It also provides opportunities for peer feedback and discussion.</p>
6.	Assignment	<p>Tasks given to students to complete outside of class. Assignments can include research papers, case studies, or practical reports. They are designed to reinforce learning, assess understanding, and develop critical thinking and problem-solving skills.</p>
7.	Self-directed Learning	<p>Students take initiative and responsibility for their own learning process. Students are encouraged to seek resources, set goals, and evaluate their progress. This is a learner-centered approach where students take the initiative to plan, execute, and assess their own learning activities. This method promotes independence, critical thinking, and lifelong learning skills.</p>
8.	Flipped Classroom	<p>In this model, students first engage with learning materials at home (e.g., through videos, readings) and then use class time for interactive activities, discussions, or problem-solving exercises. This approach aims to maximize in-class engagement and application of knowledge.</p>
9.	Peer-Assisted Learning (PAL)	<p>A collaborative learning approach where students help each other understand course material. PAL involves structured peer tutoring, study groups, or collaborative tasks. It enhances comprehension through teaching, reinforces learning, and builds teamwork skills.</p>

10.	Team-based Learning (TBL)	A structured form of small group learning where students work in teams on application-based tasks and problems. Teams are responsible for achieving learning objectives through collaborative efforts, promoting accountability, and deeper understanding of the material.
11.	Problem-based Learning (PBL)	Students work on complex, real-world problems without predefined solutions. They research, discuss, and apply knowledge to develop solutions. PBL fosters critical thinking, problem-solving skills, and the ability to integrate knowledge from various disciplines.
12.	Academic Portfolios	<p>A collection of student's work that showcases learning achievements, reflections, and progress over time.</p> <p>Portfolios include assignments, projects, and self-assessments. They provide a comprehensive view of student development, highlight strengths and areas for improvement, and support reflective learning (experiential learning)</p>



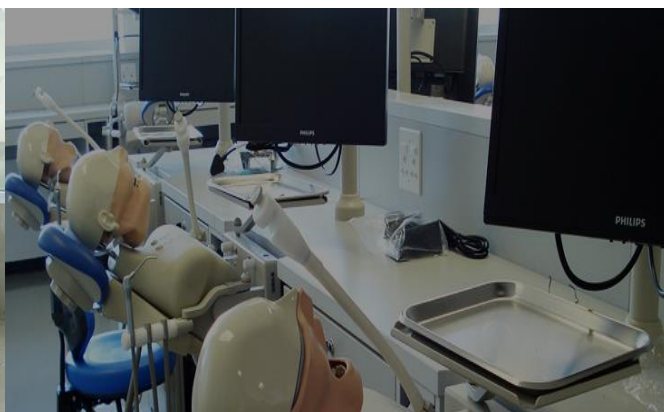
Flipped Classroom

Infrastructure Resources

Sr.	Infrastructure Resources	Description
1.	Lecture Hall	Each year has a dedicated lecture hall, totaling five lecture halls for the five professional years. These halls are equipped with modern audiovisual aids to support effective teaching and learning.
2.	Tutorial Room	The college's tutorial rooms, each with a capacity of 30, are specifically designed to support small group discussions and interactive sessions. These rooms facilitate personalized instruction, enabling more engaged and effective learning through direct interaction between students and instructors.

3.	Lab	The college is equipped with state-of-the-art laboratories for practical and clinical work. Each lab is designed to support various disciplines, to facilitate hands-on learning.
4.	Library on campus	A huge library occupies full floor has 260 seats including study carrels and group-discussion tables. Latest reference books, of Basic and Clinical Sciences along with national & international journals are available in the library.
5.	Digital Library	The digital library offers access to a vast collection of e-books, online journals, research databases, and other digital resources. It supports remote access and provides tools for academic research and learning.
6.	Learning Management System (LMS)	The LMS is a comprehensive online platform that supports course management, content delivery, student assessment, and communication. It provides tools for tracking progress, managing assignments, and facilitates ongoing academic activities.
6.	Phantom Labs	Specialized Phantom Labs are available for advanced simulation and practice in dental procedures. These labs provide high-fidelity models and simulators that help students refine their clinical skills in a controlled environment.
7.	Mess & Cafeteria	<p>The College has its own on-campus Mess which caters to 600 students. All food items including dairy, meat, and vegetables are sourced organically and bought in at the time of cooking, in order to ensure that students get freshly cooked meals at all times</p> <p>Students form the Mess committee which decides the mess menu in consultation with other students. The Mess offers fresh food to all residents three times a day. However, day scholars are also welcome to use the Mess facility at a reasonable cost.</p> <p>Two 50- inch LCD screens provide students an opportunity to get entertained during their meal times.</p>
8.	Gymnasium & Sports	<p>We recognize sports as a pivotal key to shape and maintain students' personality and good health. The College has indoor and outdoor sports facilities to help enhance the cognition and capacity to learn. There is a proper sports section for various games like basketball, football, volleyball, and cricket.</p> <p>The gym itself is fully equipped with modern machinery both for students and faculty.</p>
9.	IT Lab	The IT Lab is equipped with modern computers and software available for students who need access for academic purposes.
10.	Auditorium	The college has a spacious auditorium equipped with advanced audio-visual facilities. It is used for large-scale lectures, guest presentations, and academic conferences, providing a venue for students to engage with experts and participate in important educational events.

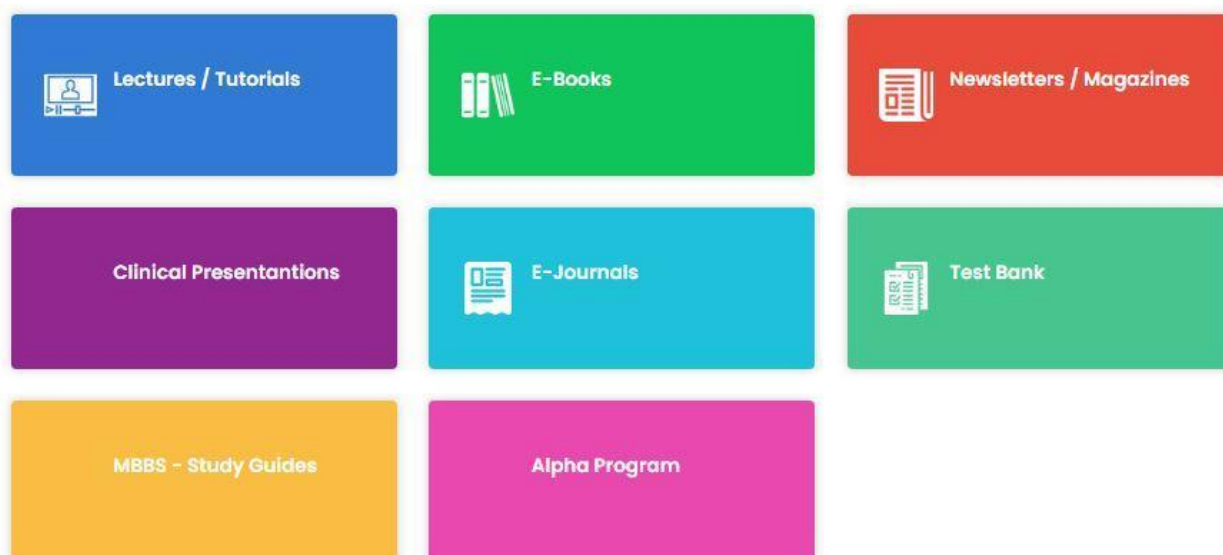
11.	Examination Halls	The college provides dedicated examination halls that are designed to accommodate a large number of students comfortably. These halls are equipped with necessary facilities to ensure a smooth and secure examination process, including proper seating arrangements, monitoring systems, and accessibility features.
-----	-------------------	--



Digital Library & Learning Management System (LMS)

1. The COVID-19 pandemic highlighted the necessity of interactive online teaching for better retention of topics by students. Strategies like online learning management system (LMS), online discussions, online quizzes, assignment design, and flipped learning enhance student engagement in online education when needed.
2. Avicenna Medical & Dental College lays emphasis on the provision of learning material and online video lectures, video tutorials in the e-library and learning resource center, which has a dedicated website of Avicenna Medical College to enable the students to develop concepts and clarify their doubts, if they have not been able to do so in the teaching sessions during college hours. The digital library can be approached on <http://digital.avicennamch.com/>.

Medical



3. The institution has also endeavored to link itself with the digital libraries and e-library of the University of Health Science (UHS) and Higher Education Commission (HEC) to enable the students to benefit from the valuable resource material, lectures and knowledge bank at these sites. The links are available with the HEC <http://www.digitallibrary.edu.pk/> and learning management system of UHS <http://lms.uhs.edu.pk> .
4. The Learning Management System (LMS) at Avicenna Medical & Dental College is a comprehensive platform managed by the Department of Student Affairs. It is designed to facilitate effective communication and information exchange between students, parents, faculty, and administrative staff. The LMS portals are specifically tailored to meet the needs of the following stakeholders:
 - a. **Students:** For academic resources and scheduling.
 - b. **Parents:** For monitoring academic progress and other relevant information.
 - c. **Faculty:** For managing course content and academic activities.
 - d. **Department of Student Affairs:** For overseeing administrative functions.
 - e. **Department of Medical/Dental Education:** For overseeing academic functions.

STUDENT PORTAL

AVICENNA MEDICAL & DENTAL COLLEGE

The Avicenna Medical & Dental College will live up to the name and reputation of "Abu Ali Sina Balkhi (Latin Name Avicenna)" and be a model of excellence for the quality and innovation of its education programs, clinical services and research. The institution will continually strive to exceed the expectations of its patients, students, residents, and local community by constantly improving the services it provides with enthusiasm, teamwork and creativity. In doing so, Avicenna Medical College aligns itself to the vision of its Affiliating University, i.e., University of Health Sciences.

[Visit Website](#)

Student Roll No.
Enter your student id or roll no.

Password
Enter your password

☐ Remember me [Forgot Password?](#)

[Login](#)

Copyright © 2023. All rights reserved.

5. Students can access a comprehensive range of academic resources and information through the student portal. By logging in with their roll number and password, students can:
 - Look at their attendance and results.
 - Review academic activities and weekly timetables/schedules.
 - Access rotation planners and test schedules.
 - Check for any notification, assignment or resource material from their teachers.
6. The information to the parent is duplicated by the issuance of the password and login to the Students Learning Management System which is dedicated to the Academic Program of the students. The parents can view the following by logging in to the mobile app of Avicenna Student Management System:
 - a) Syllabus
 - b) Table of specifications
 - c) Annual Planner
 - d) Synopsis
 - e) Block Time Table
 - f) Weekly training program
 - g) Allocation of Marks
 - h) Assessment calendar
 - i) Results of tests / exams*
 - j) Students' attendance record
 - k) Fees & fines

Assessment Guidelines

Assessment in medical & dental education is a critical component designed to ensure that medical & dental students acquire the necessary knowledge, skills, and competencies required for effective medical & dental practice.

Assessment drives learning! – George E. Millar

You will encounter a variety of assessment methods, each serving a specific purpose.

- Written examinations, including multiple-choice and essay questions, will test your grasp of theoretical concepts and subject matter.
- Practical assessments will require you to demonstrate your clinical skills and ability to apply knowledge in real-world scenarios.
- Clinical exams will evaluate your communication skills and reasoning abilities through case discussions and problem-solving exercises.
- Clinical skills and work-place based assessments will observe your hands-on proficiency and patient management capabilities.

At Avicenna Medical & Dental College, internal assessments are systematically conducted throughout each academic year of the MBBS program, as per the guidelines established by the University of Health Sciences (UHS). These assessments, overseen by the Assessment Cell, adhere to either the Annual Subject-Based System or the Integrated/Modular System, depending on the curriculum structure.

Notably, beginning with the 2024-25 academic year, the weightage of internal assessments will be increased from 10% to 20%. The UHS administers professional examinations independently, organizing them at designated neutral sites and appointing external examiners to ensure objectivity and fairness.

Internal Assessment Weightage	20%	100 %
External Assessment Weightage	80%	



Internal Assessment

How is Internal Assessment Calculated for your department?

Internal Assessment		Assessment Methods (MCQ/SEQ/OSCE/Viva/ Practical)	Percentage Weightage (write N/A where not applicable)
Session Exams	Early Session Exam	MCQs SEQs	70%
	Mid-term Session Exam	MCQs SEQs	
	Late Session/Send up Exam	MCQs, SEQs	
Grand Tests		MCQs, SEQs	30%
Batch Clinical Assessment	Early, Mid and Grand ward test	Mentioned below	
Final Clinical Assessment		MCQs, SEQs, LC, SC, OSPE, IA	100
Ward Test	Early Ward Test	Viva, OSPE	20% 30% 50%
	Mid Ward Test	Viva, OSPE	
	Grand Ward Test	McQs, SEQs, LC, SC, Ospe	
Attendance & Behaviour			
			100%



Avicen+A1:M18na Medical College

Examination Marks Scheme 2023-2024

Final Year MBBS

Form No	MBBS-5 Form-1		MBBS-5 Form-2		MBBS-5 Form-3		MBBS-5 Form-4					
Mode of Exam	Theory											
Test Type	Grand Test / Grand Ward Test		Revision Test		Session Exam		Send Up					
Weightage	30%		0%		70%		100%					
Medicine - I & Allied	MCQs 50, SEQs 50	100	MCQs 25, SEQs 25	50	MCQs 40, SEQs 40	80	MCQs 40, SEQs 40	80				
Medicine - II & Allied	MCQs 50, SEQs 50	100	MCQs 25, SEQs 25	50	MCQs 35, SEQs 35	70	MCQs 40, SEQs 40	80				
Surgery - A & Allied	MCQs 50, SEQs 50	100	MCQs 25, SEQs 25	50	MCQs 45, SEQs 45	90	MCQs 45, SEQs 45	90				
Surgery - B & Allied	MCQs 50, SEQs 50	100	MCQs 25, SEQs 25	50	MCQs 55, SEQs 55	110	MCQs 55, SEQs 55	110				
Obstetrics	MCQs 50, SEQs 50	100	MCQs 25, SEQs 25	50	MCQs 35, SEQs 30	65	MCQs 35, SEQs 30	65				
Gynaecology	MCQs 50, SEQs 50	100	MCQs 25, SEQs 25	50	MCQs 30, SEQs 25	55	MCQs 30, SEQs 25	55				
Paediatrics	MCQs 50, SEQs 50	100	MCQs 25, SEQs 25	50	MCQs 35, SEQs 45	80	MCQs 35, SEQs 45	80				
Form No	MBBS-5 Form-5		MBBS-5 Form-6		MBBS-5 Form-7		MBBS-5 Form-8		MBBS-5 Form-9	MBBS-5 Form-10		
Mode of Exam	Clinical											
Test Type	*1 Batch Clinical Assessment (BCA)								*2 Final Clinical Assessment (FCA) (Late Session)			
	Early Ward Test		Mid Ward Test		Grand Ward Test							
Weightage	20%		30%		50%				100%			
					SC, LC		OSPE		SC, LC, IA		OSPE	
Medicine - I & Allied	Viva 20, OSPE 30	50	Viva 60, OSPE 40	100	SC-I 30, SC-II 30, SC-III 30 SC-IV 30 LC 85	205	OSPE 70	70	SC-I 25, SC-II 25, SC-III 25, SC-IV 25, LC 80	180	OSPE 70	70
Medicine - II & Allied	Viva 20, OSPE 30	50	Viva 60, OSPE 40	100	SC-I 30, SC-II 30, SC-III 30 SC-IV 30 LC 85	205	OSPE 70	70				
Surgery - A & Allied	Viva 20, OSPE 30	50	Viva 60, OSPE 40	100	SC-I 25, SC-II 25, SC-III 25, SC-IV 25, LC 70	170	OSPE 55	55	SC-I 20, SC-II 20, SC-III 20, SC-IV 20, LC 65	145	OSPE 55	55
Surgery - B & Allied	Viva 20, OSPE 30	50	Viva 60, OSPE 40	100	SC-I 25, SC-II 25, SC-III 25, SC-IV 25, LC 70	170	OSPE 55	55				
Obstetrics	Viva 20, OSPE 30	50	Viva 40, OSPE 60	100	LC-OBS 30, LC-GYN 30	60	OSPE 75	75	LC-OBS 22, LC-GYN 23	45	OSPE 75	75
Gynaecology												
Paediatrics	Viva 20, OSPE 30	50	Viva 60, OSPE 40	100	SC-I 08, SC-II 08, SC-III 08, SC-IV 08, LC 18	50	OSPE 40	40	SC-I 06, SC-II 06, SC-III 06, SC-IV 06, LC 16	40	OSPE 40	40

External Assessment

What to expect in External Exam?

Subject	Theory	Practical	Total Marks
Medicine & Allied	<u>Paper I</u> Part I MCQs: 45 Marks Part II SEQs: 45 Marks <u>Paper II</u> Part I MCQs: 45 Marks Part II SEQs: 45 Marks Internal Assessment: 25 Marks	Oral & Practical: 65 Marks Clinical Examination: 210 Internal Assessment: 25 Marks	500
	200	300	

Sample Paper

MCQ

AUTHOR: Muhammad Asad Raza
DATE: 31-aug-2024
DISCIPLINE/SUBJECT: Medicine
TOPIC: Neurology
LEVEL OF STUDENT: Final Year
AREA: Diagnosis

Item Writing Template

Stem: Add your stem here. Ensure its patient-based scenario.

A 20 year old girl presented with history of loose stools, abdominal pain and fever from last 7days.Since Yesterday, she developed weakness in both legs with intact sensations. Ankle jerk was absent, knee Jerk was present. What's likely diagnosis of her neurological condition?

Lead in: Write your lead in here. Write diagnosis of Neurological condition?

Option:

a) Gullain Burrie Syndrome(GBS)*
b) Transverse Myelitis
c) Poliomyelitis
d) Cauda equina syndrome

Mark the key with an Asterix*

COGNITIVE LEVEL: Recall
DIFFICULTY LEVEL: Moderate
IMPORTANCE: Must Know
REFERENCE: Davidson Principles and Practices of Medicine 24th edition

SEQ/SAQ

AUTHOR: Muhammad Asad Raza
DATE: 31-Aug-2024
DISCIPLINE/SUBJECT: Medicine
TOPIC: Nephrology
LEVEL OF STUDENT: Final Year MBBS
AREA: Diagnosis

Scenario A 22 year old female presented with Cola coloured urine and peri-orbital swelling from 2 days. Urine Complete examination showed Hematuria, RBC cast and 2+ proteinuria. She has history of sore throat 2 weeks back. Her ASO titers were markedly elevated.

Questions	Marks
a)What's likely Diagnosis?	1
b)Enlist the possible underlying cause?	2
c) What are other Causes of Nephritic Syndrome?	2

Key	Marks
a) Post-Streptococcal Glomerulonephritis	1
b) Group A streptococcal Pharyngitis	2
c) IgA nephropathy, Lupus Nephritis, Good pasture syndrome, RPGN	2

COGNITIVE LEVEL: Recall
DIFFICULTY LEVEL: Moderate
IMPORTANCE Must Know
REFERENCE: Davidson Principle and practice of medicine 24th edition

OSCE COVER SHEET

Station Title: Instruments

Type of Station: Observed

Discipline / Specialty: Medicine

Marks: 10marks

Class Level: Final Year MBBS

Time: 3minutes

Estimated difficulty: Moderate

Exam: Grand Ward test

Taxonomy level: Understanding & Application (Applying Knowledge in Practical Situations)

List of resources required: 2 chairs, 1 table / desk

Instructions for the Candidate: Your task is to read the provided scenario below thoroughly and then provide answers to the questions listed for the examiner.

Scenario : Identify the Instrument. Enlist it's 3 Indications.



Key: Endotracheal Tube

Indications: Cardiopulmonary arrest, airway collapse, Elective intubation for surgery.

CURRICULUM DETAILS

Curricular Framework including Allocation of Hours (PMDC)

Basic & Clinical Medical Sciences / Preclinical & Para Clinical Years			
1 st & 2 nd Professional Year	3 rd Professional Year	4 th Professional Year	5 th Professional Year
Anatomy 500 Hours	General & Special Pathology 500 Hours	Eye 150 Hours	General Surgery 600 Hours
Physiology 450 Hours	Pharmacology 300 Hours	ENT 150 Hours	General Medicine 600 Hours
Biochemistry 250 Hours	Forensic Medicine & Toxicology 100 Hours	General & Special Pathology 500 Hours	Paediatrics 300 Hours
General Education 450 Hours	Psychiatry & Beh. Sciences 150 Hours	Community Medicine & Public Health 200 Hours	OBS & Gynae 300 Hours
<ul style="list-style-type: none"> • Quran Kareem – 50 Hours • Pakistan Studies / Ideology & Pakistan Constitution – 25 Hours • Islamiyat / Ethics – 25 Hours • Professionalism – 25 Hours • Communication Skills -25 Hours • English Expository Writing – 25 Hours • Arts & Humanities (One Course) -25 Hours • Co-curricular activities – 200 Hours 	Pre-clinical Operative Dentistry 80 Hours	Research Methodology & Evidence Based Medicine 100 Hours	Surgical specialties 225 Hours <ul style="list-style-type: none"> • Neurosurgery • Vascular surgery • Adult Cardiac surgery • Paediatrics surgery • Thoracic surgery • Plastic surgery
			Medical specialties 225 Hours <ul style="list-style-type: none"> • Neurology • Rheumatology • Geriatrics • Endocrinology

			<ul style="list-style-type: none">• Paediatrics Cardiology• Infectious Diseases• Oncology
--	--	--	---

Academic Planner



Avicenna Medical & Dental College
Calendar 2023- 2024
5th Year MBBS

January 2024								February 2024								March 2024								SESSION START: 1st April 2024
Su	Mo	Tu	We	Th	Fr	Sa		Su	Mo	Tu	We	Th	Fr	Sa		Su	Mo	Tu	We	Th	Fr	Sa	General Holiday	
	1	2	3	4	5	6							1	2	3						1	2	1. Kashmir Holiday - 5th Feb 2024	
7	8	9	10	11	12	13		4	05	6	7	8	9	10		3	4	5	6	7	8	9	2. Pakistan Day -23rd March 2024	
14	15	16	17	18	19	20		11	12	13	14	15	16	17		10	11	12	13	14	15	16	3. Eid- 15. Eto-7th April-14th April 2024	
21	22	23	24	25	26	27		18	19	20	21	22	23	24		17	18	19	20	21	22	0 23	4. Labor Holiday- 1st May 2024	
28	29	30	31					25	26	27	28	29				24	25	26	27	28	29	30	5. Yomni-e-Takbeer Holiday- 28th May 2024	
																31							6. Eid- 03. Adha- 07th June-19th June 2024	
April 2024								May 2024								June 2024								
Su	Mo	Tu	We	Th	Fr	Sa		Su	Mo	Tu	We	Th	Fr	Sa		Su	Mo	Tu	We	Th	Fr	Sa		
1		1	2	3	4	5	6	4			0 1	2	3 MWT	4	5								7. Ashura- 05 & 17 July 2024	
Eid-ul-Fitr	7	06	07	08	09	10	11	5	5	6 Obs	7	8	9	10	11	9	2	3	4	5	6	7 MWT	8	8. Independence Day- 14th Aug 2024
2	14	15	16	17	18	19 MWT	20	6	12	13 MWT	14	15	16	17	18	10	9	10	11	12 MWT	13	14	15	9. Eid- 11 Arafat-15th Sep 2024
3	21	22	23	24	25	26	27	7	19	20	21	22	23	24 MWT	25	Eid-ul-Adha-Su.V	16	17	18	19	20	21	22	10. Qaid-e-Azam Day/Christmas- 25th Dec 2024
4	28	29	30					8	26	27	28	29	30	31		Su.V	23	24	25	26	27	28	29	11. Spring Vacations- 1th April-20th April 2024
																Su.V	30							12. Summer Vacations- 19th June-21st July 2024
																								Winter Vacations- 21st Dec-29th Dec 2024
July 2024								August 2024								September 2024								Exats
Su	Mo	Tu	We	Th	Fr	Sa		Su	Mo	Tu	We	Th	Fr	Sa		Su	Mo	Tu	We	Th	Fr	Sa		
Su.V		1	2	3	4	5	6	12 ESE					1	2	3	17	1	2	3	4	5	6	7	White Coat Ceremony- 17 April 2024
Su.V	7	8	9	10	11	12	13	13 ESE	4	5	6	7	8	9	10	18	8	9	10	11	12	13	14	Sports Day- 6 March 2024
Su.V	14	15	16	17	18	19	20	14	11	12	13	14	15	16	17	19	15	16	17	18	19	20	21	Football- 26th April 2024
11 ESE	21	22	23	24	25	26	27	15	18	19	20	21	22	23	24	20	22	23	24	25	26	27	28	Trips and Events
12 ESE	28	29	30	31				16	25	26	27	28	29	30	31	21	29	30	31					13. Early Session- 04th July 2024- 7th Aug 2024
October 2024								November 2024								December 2024								Mid Session- 19th Oct 2024- 30th Oct 2024
Su	Mo	Tu	We	Th	Fr	Sa		Su	Mo	Tu	We	Th	Fr	Sa		Su	Mo	Tu	We	Th	Fr	Sa		
21							25								20	1	2	3	4	5	6	7	14th Session/Seed Up- 04th Dec 2024- 30th Dec 2024	
22	6	7	8	9	10	11	26	5	4	5	6	7	8	9	21	8	9	10	11	12	13	14		
23 MSE	13	14	15	16	17	18	27	12	11	12	13	14	15	16	22 LSE/Seed Up	15	16	17	18	19	20	21		
24 MSE	20	21	22	23	24	25	28	17	18	19	20	21	22	23	23 LSE/Seed Up	22	23	24	25	26	27	28		
25 MSE	27	28	29	30	31		29	24	25	26	27	28	29	30	31	24 FCA	29	30	31					
January 2025								February 2025								March 2025								
Su	Mo	Tu	We	Th	Fr	Sa		Su	Mo	Tu	We	Th	Fr	Sa		Su	Mo	Tu	We	Th	Fr	Sa		
31 FCA				1	2	3	4							1									1	
35 FCA	5	6	7	8	9	10	11	2	3	4	5	6	7	8		2	3	4	5	6	7	8		
36	12	13	14	15	16	17	18	9	10	11	12	13	14	15		9	10	11	12	13	14	15		
37	19	20	21	22	23	24	25	16	17	18	19	20	21	22		16	17	18	19	20	21	22		
38	26	27	28	29	30	31		23	24	25	26	27	28		23	24	25	26	27	28	29			

ALLOCAION OF CURRICULUM HOURS

MBBS - FINAL YEAR / 2023-2024

Subject Title	Clinical Rotation	Lecture	SDL	Evening clinical Rotation	CST	Assessment	Total Hours (36 Weeks)	Interactive Sessions (3 Weeks)	AVMC (Total Hours Achivement)	(PMDC Hours)
Surgery	144	180	12	120	60	24	540	28	568	850
Medicine	144	180	12	120	60	24	540	28	568	850
Paeds	72	108	6	60	30	12	288	15.5	303.5	300
OBS/Gynae	72	144	6	60	30	12	324	18.5	342.5	300
TOTAL	432	612	36	360	180	72	1692	90	1782	2300

Table of Specification

Unit/ Chapter	Topic/ Content	Student Learning Objectives	Mode of Information (MOIT)	Learning Domain (KSA-Model)	Assessment Method (No. of Questions)			
					MCQS	SEQs	Viva	OSCE/OSPE or Practical
Cariology	Structure of Heart	By the end of this topic, students will be able to: <ul style="list-style-type: none"> • Xyz • Xyz • xyz 	Lecture/Tutorial/ Practical/ SDL/ Skill/ Clinical/ Bedside Teaching / Demonstration	Knowledge (Cognitive C1, C2, C3) or Skill (Pscyhomotor P1, P2, P3)/ or Attitude (Effective A1, A2, A3)	How many MCQs from this topic?	How many SEQs/SAQs from this topic?	Viva Qs? Or OSPE?	
		By the end of this topic, students will be able to: <ul style="list-style-type: none"> • Xyz • Xyz • xyz 						
		By the end of this topic, students will be able to: <ul style="list-style-type: none"> • Xyz • Xyz 						
Total					45	9		

Sr. No.	Topic	LEARNING OBJECTIVES	KNOWLEDGE			SKILL	ATTITUDE	TOTAL	Mode of information transfer							Self Directed Learning	Assessment		TOTAL HOURS	References
			Cognitive Domain			Psychomot or Domain	Effective Domain	%	MIT							SDL	MCQs	SEQs		
			C1	C2	C3	P	A	%	Lecture	Lectures Topic	Clinical skills	Clinical Skills Topic	E.Clinical Rotation	M.Clinical Rotation	Clinical Rotation Topic		7	1	Hour	
1	PULMONOLOGY	Students should be able to:	1%	2%	2%	2%	2%	9%	1	Presenting Problems In Respiratory Disease	1	1-chest examination anterior	1	1	History taking	1				Davidsons Principles and practice of Medicine 24th Edition
								1						Chest Examination						
		understand the basic anatomy and physiology and pathology of relevent system.							1	Investigation In Respiratory Disease	1	2-chest examination posterior	1	1	Investigation In Respiratory Disease					
									1	Pneumionia	1	3- pleural tap			1	Pneumionia				
		describe the cardinal sign & sympom of respiratory system								1	Lung Abcess		4- spirometry	1		Lung Abcess				Chapter-17
									1	Asthma		5-peek flow meter	1	1	Asthma				Page (479-556)	

		will discuss investigation for diagnosis.						1	Bronchiectes is					Bronchiectesis					
								1	Copd/Cor Pulomonale		1	1		Copd/Cor Pulomonale					
		will practice of differential diagnosis of respiratory system						1	Pulmonary vascular diseases (Pulmonary Embolism & HTN)		1	1		Pulmonary vascular diseases (Pulmonary Embolism & HTN)					
		Students will illustrate the causes, manegment plan of all respiratory diseases						1	Pulmonary TB	1	1	1		Pulmonary TB					
								1	Tumors Of bronchus & Lungs		1	1		Tumors Of bronchus & Lungs					
								1	Pleural Effusion					Pleural Effusion					
		students will learn to take proper history examination of patients and make diffential diagnosis and will able to describe it.						1	Pneumothor ax		1	1		Pneumothora x					
								1	Sarcoidosis	1	1	1		Sarcoidosis					
								1	DPLD/Interst itial lung disease			1		DPLD/Interstit ial lung disease					
		students will able to learn the examination of chest inspection, palpation, percussion and auscultation						1	Occupationa l lung disease			1		Occupational lung disease					
								1	Sleep Disorder (The Sleep Apnea/Hypopnea Syndrome)	1	1	1		Sleep Disorder (The Sleep Apnea/Hypopnea Syndrome)		7	1		

		TOTAL						9%	16		6		11	13			5	1	43			
2	HEAMATOLOGY & ONCOLOGY	Students should be able to:	1%	2%	2%	2%	2%	9%	1	Presenting Problem In Blood Diseases	1	General Physical examination	1	1	history taking	1				Davidsons Principles and practice of Medicine 24th Edition		
		1.understand the basic anatomy and physiology of the relevant system							1	Microcytic Anemia					examination related to blood							
		describe the cardinal sign & sympom of hematology and oncology diseases							1	Macrocytic Anemia			1	1	Microcytic Anemia							
									1	Hemolytic anemia	Macrocytic Anemia											
			should know the basic knowledge of al blood disease and oncology							1	Aplastic Anemia	1	Examination of Anemic Patients	1	1		Hemolytic anemia					Chapter-25
									1	Bleeding Disorders	Aplastic Anemia											
		students will learn causes, investigation, compli cation and treatment regarding all diseases								1	Hemophilia/ chrismax diseases	1	Examintion of pt with Lypphoma and Myloprolifer ative Disorders	1	1		Bleeding Disorders					
									1	Platelets Disorder	Hemophilia/c hrismax diseases											
			will learn to take history of patients, will do examination, will make differential diagnosis and will presnet to teacher . All things will be observed directly							1	Acute Leukemia	1		1	1		Platelets Disorder					
									1	Chronic leukemia	Acute Leukemia											
										1	Lymphoma						Chronic leukemia					
				will learn to take history of patients, will do examination, will make differential diagnosis and will presnet to teacher . All things will be observed directly						1	Myeloprolife rative Disorder	1		1	1		Lymphoma					
										1	Multiple myeloma						Myeloprolifer ative Disorder					
														1	1		Multiple myeloma		5		1	

		TOTAL						9%	13		5		10	13			7	1	39	
3	NEUROLOGY	Students should be able to:	1%	2%	2%	2%	2%	9%	1	Introduction to CNS	1	Upper Limb Examination	1	1	history taking	1				Davidsons Principles and practice of Medicine 24th Edition
		1.understand the basic anatomy and physiology of the relevant system							1	Headache					CNS + PNS examination					
									1	Epilepsy					Headache					
									1	Stroke (Ischemic)			1	1	Epilepsy					
		describe the cardinal sign & sympom of nervous system							1	Stroke (Hemraghic)	1	lower limb examination		1	Stroke (Ischemic)					
									1	Motor Neuron Disease			1	1	Stroke (Hemraghic)				Chapter- 28,29	
		will discus investigation for diagnosis.							1	Parkinson Disease/Movement Disorder	1	cranial nerve examination	1	1	Motor Neuron Disease				Page 1119-1216	
													1	1	Parkinson Disease/Move ment Disorder					
		will practice of differential diagnosis of nervous system							1	Multiple Sclerosis										
									1	Cranial Nerve Disorder			1	1	Multiple Sclerosis					
		Students will illustrate the causes, manegment plan of all neurologic diseases							1	Myasthenia Gravis	1	peripheral nervus sytem examination	1	1	Cranial Nerve Disorder					
									1	Cerebellar Disorder			1	1	Myasthenia Gravis					
									1	Spinal Cord Lesion	1		1	1	Cerebellar Disorder					

								1	Muscular Dystrophies					Spinal Cord Lesion					
								1	BRAIN INFECTIONS (Meningitis/Encephalitis)			1	1	Muscular Dystrophies					
								1	Peripheral Neuropathy				1	BRAIN INFECTIONS (Meningitis/Encephalitis)					
								1	Brain tumors					Peripheral Neuropathy					
								1	Brain Abscess/Benign Intracranial Hypertension	1		1	1	Brain tumors					
													1	Brain Abscess/Benign Intracranial Hypertension		7	1		
							9%	17		6		11	13			7	2	45	

4	CARDIOLOGY	Students should be able to:	1%	2%	2%	2%	2%	9%	1	Presenting problems in CVS	1	Precordium examination , with general physical examination .	1	1	history taking	1				Davidsons Principles and practice of Medicine 24th Edition
		Understand the basic anatomy and physiology and pathology of relevent system.							1	Rheumatic Fever					CVS Examination					
									1	Infective Endocarditis			1	1	Rheumatic Fever					
									1	IHD-1					Infective Endocarditis					
		describe the cardinal sign & sympom of CVS							1	IHD-2	1	Murmurs of mitral valve disease	1	1	IHD-1					Chapter-- 16
									1	Heart Failure					IHD-2					Page 385- 478
		will discus investigation for diagnosis.							1	Cardiomyopathy			1	1	Heart Failure					
									1	Pericardial Disease					Cardiomyopathy					
		will practice of differential diagnosis							1	Tachy Arrythmias			1	1	Pericardial Disease					
									1	Brady Arrythmias	1	Murmurs of Aortic valve disease	1	1	Tachy Arrythmias					
		Students will illustrate the causes, manegment plan of all cardio vascular system diseases							1	HTN-1					Brady Arrythmias					
									1	HTN-2				1	HTN-1					
									1	Peripheral Vascular Disease			1	1	HTN-2					
									1	Mitral valve disease	1	Murmurs of tricuspid and pulmonary valve	1	1	Peripheral Vascular Disease					
		students will learn to take proper history examination of patients and make diffential diagnosis and will able to describe it.							1	Aortic valve disease			1	1	Mitral valve disease					
									1	Valvular Heart Disease (Right Side)			1	1	Aortic valve disease					
									1	Congenital Heart Disease	1			1	Valvular Heart Disease (Right Side)					
									1	Aortic Dissection & aneurysm			1	1	Congenital Heart Disease					
		students will able to learn heart sound and relevent examination							1		1			1	Aortic Dissection & aneurysm		7	2		

		TOTAL						9%	18		6		11	13			10	2	46	
5	NEPHROLOGY	Students should be able to:	1%	2%	2%	2%	2%	9%	1	Presenting Problems In Renal Diseases	1	examination of abdomen & pelvis	1	1	History taking	1				Davidsons Principles and practice of Medicine 24th Edition
									1	Acute Renal Failure	1		1	1	Examination of renal					
		Understand the basic anatomy and physiology and pathology of relevent system.							1	Chronic Renal Failure	1		1	1	Acute Renal Failure					
									1	Glomerulonephritis	1		1	1	Chronic Renal Failure					
		describe the cardinal sign & sympom of renal diseases							1	Tubulo-Interstitial Diseases	1	examination of pr with nephrotic and nephritic patients	1	1	Tubulo-Interstitial Diseases					Chapter-18
									1	UTI	1		1	1	UTI					
		will discus investigation for diagnosis.							1	PolyCystic Kidney Disease	1		1	1	PolyCystic Kidney Disease					Page 557-612
									1	Renal Vascular Disorder	1				Renal Vascular Disorder					
		will practice of differential diagnosis							1	Inrtoduction To Dialysis And Renal Transplant	1	examination of patients with AKI & CKD	1	1	Inrtoduction To Dialysis And Renal Transplant					
									1	Renal tumours	1			1	Renal tumours					
		Students will illustrate the causes, manegment plan of all renal system diseases							1	Acid Base HOMEOSTASIS	1		1	1	Acid Base HOMEOSTASIS					
									1	Hypo & Hypernatremia	1		1	1	Hypo & Hypernatremia					

		will practice of differential diagnosis of diseases of GIT sys						1	Diarrhea(acute and chronic)	1	examination of pt with billiary diseases			Irritable bowel syndrome						
								1	Acute & chr Pancreatitis			1	1	Diarrhea(acute and chronic)						
		Students will illustrate the causes, manegment plan of all GIT & liver diseases						1	Acute viral hepatitis			1	1	Acute & chr Pancreatitis						
								1	Chronic Hepatits			1	1	Acute viral hepatitis						
		students will learn to take proper history examination of patients and make diffential diagnosis and will able to describe it.						1	Chronic Liver disease/cirrhosis-1	1				Chronic Hepatits						
								1	Chronic Liver disease/cirrhosis-2		1	1	Chronic Liver disease/cirrhosis-1							
		students will able to learn the examination of abdomen inspection, palpation, percussion and auscultation.						1	Ascites		1	1	Chronic Liver disease/cirrhosis-2							
								1	Biliary diseases		1	1	Ascites							
		students knowledge will be tested by ward tests.						1	Complicatio ns of Cirrhosis & CA liver	1				Biliary diseases						
								1	Upper		1	1	Complications of Cirrhosis & CA liver							
								1	Lower Gi Bleed		1	1	Upper							
								1	Auto Immune Hepatitis		1	1	Lower Gi Bleed							
												1	1	Auto Immune Hepatitis		13	3			

6	GASTROENTEROLOGY & LIVER	Students should be able to:	2%	2%	1%	3%	4%	12%	1	Presenting Problems In GIT And Liver	1	examination of abdomen & pelvis	1	1	History taking	1				Davidsons Principles and practice of Medicine 24th Edition
		understand the basic anatomy and physiology and pathology of relevent system.							1	Dyspepsia / Apd					Examination of GIT & LIVER					
									1	Dysphagia /Achalasia/c a esophagus					Dyspepsia / Apd					
		describe the cardinal sign & sympom of git and liver diseases							1	Malabsorpti on Syndrome	1	Examination of patients with chronic liver disease	1	1	Dysphagia /Achalasia/ca esophagus				Chapter- 23,24	
		will discus investigation for diagnosis and treatment							1	Inflammatory Bowel Disease			1	1	Malabsorptio n Syndrome				Page 781- 858	
									1	Irritable bowel syndrome				1	Inflammatory Bowel Disease					

		TOTAL						12%	18		6		11	13			7	2	45		
7	INFECTIOUS DISEASES	Students should be able to:	1%	2%	2%	2%	1%	8%	1	Sepsis / Septic Shock	1	general physical examination related to infectious diseases.	1	1	History taking regarding infectious diseases	1				Davidsons Principles and practice of Medicine 24th Edition	
		basic concept and understanding of infectious diseases.							1	Acute Infectious Diarrhea					examination regarding infectious diseases						
									1	Enteric Fever											
									1	Malaria											
		Students should know the different diseases of bactrial, viral helmenthic infection.							1	Amebiasi/ Giardiasis	1	examination of patients with enteric fever & malaria	1	1	Sepsis / Septic Shock					Chapter-13,14,15	
									1	AIDS					Acute Infectios Diarrhea						
									1	Rabies/ Infectious Mononucleo sis					Enteric Fever					Page 261-384	
		students will learn the sign symptom , investigation, their differential diagnosis and manegment													Malaria						
									1	Tetanus/ Cholera	1	examination of patients with HIV& AIDS	1	1	Amebiasi/ Giardiasis						
									1	Dngue Fever And Complicatio n					AIDS						
		will learn and practice the examination related to infectious diseases							1	Covid-19					Rabies/ Infectious Mononucleosi s						
									1	Helmenthic Infestation	Tetanus/ Cholera										
		1. Have a basic concept of HIV/AIDS								1	Brucellosis	1		1	1		Dngue Fever And Complication				
										1	Hydated disease						Covid-19				
			will learn symptomatology, investigation, and treatment option along with its complication								1						PUO	Helmenthic Infestation			
												Brucellosis									
												Hydated disease									
		students knowledge will be tested by ward tests.												1	1		PUO		7	2	

[illegible]

9		Students should be able to:	1%	2%	2%	2%	1%	8%												
	RHEUMATOLOGY								1	PRESENTING PROBLEMS IN RHEUMATOLOGY AND MUSKULOSKELETAL DISEASES	1	Examination of patients with SLE.	1	1	History taking in rheumatologic diseases	1				Davidsons Principles and practice of Medicine 24th Edition
		1.understand the basic anatomy , physiology and Pathology of the relevant system							1	RA				1	Examination in rheumatologic diseases					
									1	SLE			1	1	RA					
									1	Scleroderma	1	Examination of patients with RA & OA	1	1	SLE					
		describe the sign & sympom of rheumatologic and bone diseases							1	Segative Arthropathy(As, Bechet Disease			1	1	Scleroderma					Chapter-26
									1	Crystal Arthropathy			1	1	Segative Arthropathy(As, Bechet Disease					
		Will discuss investigation for diagnosis.							1	Schogren Syndrome			1	1	Crystal Arthropathy					Page 989-1062
		will practice of differential diagnosis of diseases of rheumatology and bones							1	Vasculitis, Takayasu, Pan			1	1	Schogren Syndrome					
									1	Temporal/ POLYMYALGIA RHEUMATICA,			1	1	Vasculitis, Takayasu, Pan					
									1	Berger Disease + Wegner Granulomatosis	1		1	1	Temporal/ POLYMYALGIA RHEUMATICA,					
		Students will illustrate the causes, investigation, manegment plan of all rheumatologic diseases like SLE,RA,SS, DM, Vasculitis, etc.							1	Dermatomyositis/ Polymyositis			1	1	Berger Disease + Wegner Granulomatosis					
											1		1	1	Dermatomyositis/ Polymyositis					
													1	1	OA/ OSTEOPOROSIS		6	1		

		TOTAL						8%	11		5		11	13			6	1	38	
10	DERMATOLOGY	students will be able to:	1%	2%	2%	1%	1%	7%	1	Anatomy and physiology of skin, basic lesion	1	GENERAL SKIN EXAMINATION	1	1	History taking	1				Davidsons Principles and practice of Medicine 24th Edition
		basic understanding of skin diseases							1	Cutaneous infestation					Skin examination					
		will learn the basic dermatologic lesion and its differences							1	Acne rosaceae			1	1	Cutaneous infestation					
									1	Psoriasiform lesion and psoriasis			1	1	Acne rosaceae					
									1	Psoriasiform lesion and psoriasis			1	1	Psoriasiform lesion and psoriasis					Chapter-27
									1	Immunobullous diseases	1	EXAMINATION OF PSORIASIS	1	1	Immunobullous diseases					Page 1063-1118
		students will get knowledge of skin diseases its causes, presentation, complication and management							1	Eczema			1	1	Eczema					
									1	Viral infections					Viral infections					
									1	Bacterial infections			1	1	Bacterial infections					
									1	Cutaneous fungal infection			1	1	Cutaneous fungal infection					
		students will practice the history taking and physical examination related to diseases							1	Mycobacterial infections					Mycobacterial infections					
									1	Drug Reactions			1	1	Drug Reactions					
									1	Pigmentary Diseases	1			1	Pigmentary Diseases					
		students will learn about basic investigation and skin biopsy							1	Cutaneous malignancies			1	1	Cutaneous malignancies					
									1	Cutaneous Manifestation of systemic diseases				1	Cutaneous Manifestation of systemic diseases					
		students knowledge will be tested by ward tests.							1	Autoimmune diseases	1			1	Autoimmune diseases					
									1	Dermatologic procedure					Dermatologic procedure					
									1	History taking in dermatology			1	1	History taking in dermatology					

		students will able to take history of psychiatric patients its examination and will illustrate its differential diagnosis						1	psychosexual disorder										
								1	counselling and psychotherapy	1						10	2		
		TOTAL					8%	18		5		11	13					45	
12	ACUTE MEDICINE & MISCELLANEOUS	students will able to:						1	Heat Stroke				1	Heat Stroke	1				
		Students will know the basic knowledge of these diseases	1%		1%	1%	3%	1	Snake Bite	2	ORGANOPHOSPHATE POISONING PATIENT EXAMINATION	1		Snake Bite				7	Davidsons Principles and practice of Medicine 24th Edition
		will discuss investigation, diagnosis and management						1	Electric Shock				1	Electric Shock					
								1	Drug poisoning (Paracetamol & Organophosphorus)				1	Drug poisoning (Paracetamol & Organophosphorus)					
		TOTAL					3%	4		2		1	2					8	Chapters-9,10,11,12
GRAND TOTAL			13%	22%	22%	22%	21%	100%	180	60		120	144		12			Total: 516 hrs	

Assessment Schedule



Avicenna Medical College 5th Year MBBS (M-19) 1st Term Test Schedule

Week	Date	Day	Subject	Test	Topic	Reference
1st	1-Apr-24	Mon	All Subjects	Lecture	Lecture Time Divided Paeds / Gynae	
Eid- Ul- Fitr Holidays:7th April-14th April,2024						
2nd	15-Apr-24	Mon	All Subjects	Lecture	Lecture Time Divided Surgery / Medicine	
	19-Apr-24	Fri	Early Ward Test			
3rd	22-Apr-24	Mon	Surgery unit-1	Grand Test	Skin & subcutaneous tissue. (Paples 2) Liver (Benign), Acute limb ischemia, chronic limb ischemia	(Paper-2) Bailey & love 28 Ed. Ch # 45, 61,69
4th	29-Apr-24	Mon	Medicine-I	Grand Test	Pulmonolgy	Davidson 24th Edi
	3-May-24	Fri	Mid Ward Test			

5th	6-May-24	Mon	OBS	Grand Test	Hist&Exam , Ante.Care , Normal fetal growth & Develop , Fetal well being ,Prenatal Dx , Obstet Complica, Physio pf Pregnancy	Chap 1-6 (Ten Teachers OBS 20th Edi), Ch :3 (Ten Terachers OBS 19th Edi)
6th	13-May-24	Mon	Grand Ward Test-1			
7th	20-May-24	Mon	Paeds	Grand Test	Growth, development, Nutrition, IMNCL, infectious diseases, hematological diseases	Pervaiz Akbar
	24-May-24	Fri	Early Ward Test			
8th	27-May-24	Mon	Medicine-II	Grand Test	Cardiology	Davidson 24th Edi
9th	3-Jun-24	Mon	Surgery unit-2 (Paper-1)	Grand Test	Metabolic response to injury (Paper 1)Surgical infections,Wound healing & tissue repair shock and blood transfusion, hemostasis, Tropical lifections conflict surgay Chest trauma, conflict Disaster surgery, Peri-operative Care	Bailey & love 28th Ed. Ch#1,2,3,5,6,33,34, 24, 29.
	7-Jun-24	Fri	Mid Ward Test			
10th	10-Jun-24	Mon	Gynae	Grand Test	The develop & Anat. Gyane Hist & Exam , Hormo cont, Dis of menst bleeding , Implant . & early preg ., contrcep & Abortion	Ch 1-6 , Ten Teachers Gynae 20th Edition
10th	12-Jun-24	Wed	Grand Ward Test-2			

Eid- Ul- Adha+Summer Vacations:15th June,2024 - 21st July,2024

11th	22-Jul-24	Mon	Surgery unit-1 (Paper-2)	Grand Test	Venous disorders, Lymphatic disorders, Thorax, Cardiac Surgery, Cleft lip & Palate, Plastic & reconstructive surgery, Liver-2, Cranial neurosurgery, Burns, Pharynx & larynx	Bailey & love 28 Ed. Ch# 61,62A, 60, 59,50,47,48,46,52
Early Session: 24th July,2024 - 7th Aug,2024						
11th	24-Jul-24	Wed	OBS	ESE	Hist&Exam , Ante.Care , Normal fetal growth & Develop , Fetal well being ,Prenatal Dx , Obstet	Chap 1-6 (Ten Teachers OBS 20th Edi), Ch :3 (Ten Terachers OBS 19th
11th	25-Jul-24	Thu	Day Off			
11th	26-Jul-24	Fri	Gynae	ESE	The develop & Anat. Gyane His	Ch 1-6 , Ten Teachers Gynae 20th Edition
11th	27-Jul-24	Sat	Day Off			
11th	28-Jul-24	Sun	Day Off			
11th	29-Jul-24	Mon	Medicine-I	ESE	Entire Syllabus Covered	
12th	30-Jul-24	Tue	Day Off			

12th	31-Jul-24	Wed	Medicine-II	ESE	Entire Syllabus Covered
12th	1-Aug-24	Thu	Day Off		
12th	2-Aug-24	Fri	Surgery unit-1	ESE	(Paper-2) Entire Syllabus Covered
12th	3-Aug-24	Sat	Day Off		
12th	4-Aug-24	Sun	Day Off		
12th	5-Aug-24	Mon	Surgery unit-2	ESE	(Paper-1) Entire Syllabus Covered
13th	6-Aug-24	Tue	Day Off		
13th	7-Aug-24	Wed	Paeds	ESE	Entire Syllabus Covered
End Of 1st Term					



Avicenna Medical College

5th Year MBBS (M-19)

2nd Term Test Schedule

Week	Date	Day	Subject	Test	Topic	Reference
14th	12-Aug-24	Mon	All Subjects	Lecture	Lecture Time Divided	
	16-Aug-24	Fri	Early Ward Test			
15th	19-Aug-24	Mon	OBS	Grand Test	Multiple Preg, PTL , HTN in preg , Medical Dis, Perinatal Infect.	CH : 7-11 TEN TEACHERS OBS 20TH EDITION
	23-Aug-24	Fri	Medicine-I	Grand Test	Central nervous system,Infectious diseases	Davidson 24th Edi
16th	26-Aug-24	Mon	Surgery unit-2	Grand Test	Spine trauma, Traumatic Brain injury 1,Pediatric surgery Laparoscopic surgery, Principle of Oncology. Dignostic Imaging in Surgery, Gastrointestinal endoscopy, Nutrition and fluid therapy, Pre-operative assessment in high sick patient, Pain relief, Post operative care	(Paper-1) Bailey & love 28th Ed. Ch#30, 28. 17,12,8,9,25,21,23
	30-Aug-24	Fri	Mid Ward Test			

17th	2-Sep-24	Mon	Medicine-II	Grand Test	Gastroentrology, hepatology, haematology, oncology	Davidson 24th Edi
18th	10-Sep-24	Tue	Grand Ward Test-3			
19th	16-Sep-24	Mon	Gynae	Grand Test	Subfertility, Menopause, Genitourinary, Urogynae & POP, Gynae surgery & Therapeutics	Ch 7-10 ,17, Ten Teachers Gynae 20th Edition
20th	23-Sep-24	Mon	Paeds	Grand Test	GIT, CNS, CVS, Neonatology	Pervaiz Akbar
	27-Sep-24	Fri	Mid Ward Test			
21st	30-Sep-24	Mon	Surgery unit-1	Grand Test	Aneurysms, Abdominal wall & hernias, Umbilical diseases, Peritoneum & Omentum, Mesentery and Retroperitoneal space, Esophagus. Stomach, Duodenum, Thyroid Parathyroid gland, ilium, Bariatric surgery , Metabolic Surgery	(Paper-2) Bailey & love 28th Ed. Ch#55, 56, 64, 65, 66, 67, 68, 74.
	3-Oct-24	Thu	Grand Ward Test-4			

22nd	7-Oct-24	Mon	Medicine-I	Grand Test	Nephrology	Davidson 24th Edi
23rd	14-Oct-24	Mon	All Subjects	Lecture	Lecture Time Divided	
Mid Session: 16th Oct 2024 - 30th Oct,2024						
23rd	16-Oct-24	Wed	Medicine-I	MSE	All Syllabus Covered	
23rd	17-Oct-24	Thu	Day Off			
23rd	18-Oct-24	Fri	Medicine-II	MSE	All Syllabus Covered	
23rd	19-Oct-24	Sat	Day Off			
24th	20-Oct-24	Sun	Day Off			
24th	21-Oct-24	Mon	OBS	MSE	All Syllabus Covered	T. T OBS 20TH Edition CH : 1-11
24th	22-Oct-24	Tue	Day Off			
24th	23-Oct-24	Wed	Gynae	MSE	ALL Syllabus Covered	T.T GYNAE 20TH Edition CH : 1-10, 17
24th	24-Oct-24	Thu	Day Off			
24th	25-Oct-24	Fri	Surgery unit-1	MSE	(Paper-2) Entire Syllabus Covered	
24th	26-Oct-24	Sat	Day Off			
25th	27-Oct-24	Sun	Day Off			
25th	28-Oct-24	Mon	Surgery unit-2	MSE	(Paper-1) Entire Syllabus Covered	
25th	29-Oct-24	Tue	Day Off			
25th	30-Oct-24	Wed	Paeds	MSE	Entire Syllabus Covered	
End Of 2nd Term						



Avicenna Medical College

5th Year MBBS (M-19)

3rd Term Test Schedule

Week	Date	Day	Subject	Test	Topic	Reference
26th	4-Nov-24	Mon	All Subjects	Lecture	Lecture Time Divided	
	7-Nov-24	Thu	Grand Ward Test-5			
27th	11-Nov-24	Mon	Medicine-II	Grand Test	Endocrinology, Rheumatology, Metabolic diseases,Dermatology	Davidson 24th Edi
28th	18-Nov-24	Mon	Surgery unit-1 +Urology	Grand Test	Gallbladder and bile ducts, Jejunum, , Large intestine, vermiform appendix, Pancreas	(Paper-2) Bailey & love 28th Ed. Ch# 71, 72, 77,76 + Urology
28th	22-Nov-24	Fri	OBS	Grand Test	Normal & abn labor, Operti. Obstet, Obs Emerg , Puerpurium, Neonatology	CH 12-16 , OBS TEN TEACHERS 20TH Edition


29th	25-Nov-24	Mon	Paeds	Grand Test	Respiratory diseases, nephrology, endocrinology, genetics, surgery,	Pervaiz Akbar
	29-Nov-24	Fri	Mid Ward Test			
30th	2-Dec-24	Mon	Surgery unit-2+ Orthopaedics	Grand Test	Day case surgery, introduction to trauma, Early management & assessment of severe trauma, Traumatic brain injury-2, Neck trauma, Torso trauma, Tissue engineering & regeneration, tissue & molecular diagnosis, Abdominal trauma, Radiology in surgery	(Paper-1) Bailey & love 28th Ed. Ch. 22,26,27, 4, 11, 7 Orthopaedics
	6-Dec-24	Thu	Grand Ward Test-5			
31st	9-Dec-24	Mon	Gynae	Grand Test	Benign & Malignant Diseases of female Genital Tract	CH 11-16 , GYNAE TEN TEACHERS 20th Edition
	10-Dec-24	Tue	Day Off			
	11-Dec-24	Wed	Medicine- 1	Grand Test	Psychiatry	Davidson 24th Edi
	12-Dec-24	Thu	Day Off			
	13-Dec-24	Fri	Paeds	Grand Test	IMNCI, psychiatry, poisoning. metabolic diseases, rheumatology, acutely ill child, acid base balance	Pervaiz Akbar

LSE/Send Up:16th Dec,24 - 30th Dec,24

32nd	16-Dec-24	Mon	Paeds	LSE/Send Up	Entire Syllabus Covered
	17-Dec-24	Tue	Day Off		
	18-Dec-24	Wed	OBS	LSE/Send Up	Entire Syllabus Covered
	19-Dec-24	Thu	Day Off		
	20-Dec-24	Fri	Gynae	LSE/Send Up	Entire Syllabus Covered
	21-Dec-24	Sat	Day Off		
33rd	22-Dec-24	Sun	Day Off		
	23-Dec-24	Mon	Surgery unit-1	LSE/Send Up	(Paper-2) Entire Syllabus Covered
	24-Dec-24	Tue	Day Off		
	25-Dec-24	Wed	Quaid-e-Azam Day/Christmas Holiday- 25th Dec,2024		
	26-Dec-24	Thu	Surgery unit-2	LSE/Send Up	(Paper-1) Entire Syllabus Covered
	27-Dec-24	Fri	Day Off		
	28-Dec-24	Sat	Medicine-I	LSE/Send Up	Entire Syllabus Covered

34th	29-Dec-24	Sun	Day Off		
	30-Dec-24	Mon	Medicine-II	LSE/Send Up	Entire Syllabus Covered
	31-Dec-24	Tue	Final Clinical Assessment		
	1-Jan-25	Wed	Final Clinical Assessment		
	2-Jan-25	Thu	Final Clinical Assessment		
	3-Jan-25	Fri	Final Clinical Assessment		
	4-Jan-25	Sat	Final Clinical Assessment		
35th	5-Jan-25	Sun	Day Off		
	6-Jan-25	Mon	Final Clinical Assessment		
End Of 3rd Term					

Clerkships

<div style="display: flex; justify-content: space-between; align-items: center;">  <div style="text-align: center;"> Avicenna Medical College Final Year MBBS M-19 Ward Test Schedule </div> </div>																		
CLINICAL ROTATION DURATION	CLINICAL ROTATION - 1 1-April-24 to 11-May-24		GRAND WARD TEST-1	CLINICAL ROTATION - 2 14-May-24 to 11-June-24		GRAND WARD TEST-2	CLINICAL ROTATION - 3 22-July-24 to 7-Sep-24		GRAND WARD TEST-3	CLINICAL ROTATION - 4 10-Sep-24 to 12-Oct-24		GRAND WARD TEST-4	CLINICAL ROTATION - 5 15-Oct-24 to 7-Dec-24		GRAND WARD TEST-5	CLINICAL ROTATION - 6 10-Dec-24 to 18-Jan-25		GRAND WARD TEST-6
TEST DATE:	Early Ward Test	Mid Ward Test		Early Ward Test	Mid Ward Test		Early Ward Test	Mid Ward Test		Early Ward Test	Mid Ward Test		Early Ward Test	Mid Ward Test		Early Ward Test	Mid Ward Test	
	19-Apr-24	3-May-24	13-May-24	24-May-24	7-Jun-24	12-June-24	16-Aug-24	30-Aug-24	9-Sep-24	20-Sep-24	4-Oct-24	14-Oct-24	15-Nov-24	29-Nov-24	9-Dec-24	20-Dec-24	10-Jan-25	20-Jan-25
BATCH A	M-I	M-I	GRAND WARD TEST MEDICINE-I	M-II	M-II	GRAND WARD TEST MEDICINE-II	OB.G.GYN.AE	OB.G.GYN.AE	GRAND WARD TEST OB.G.GYN.AE	S-I	S-I	GRAND WARD TEST SURGERY-I	S-II	S-II	GRAND WARD TEST SURGERY-II	PAED.S	PAED.S	GRAND WARD TEST PAED.S
BATCH B	M-II	M-II	GRAND WARD TEST MEDICINE-II	OB.G.GYN.AE	OB.G.GYN.AE	GRAND WARD TEST OB.G.GYN.AE	S-I	S-I	GRAND WARD TEST SURGERY-I	S-II	S-II	GRAND WARD TEST SURGERY-II	PAED.S	PAED.S	GRAND WARD TEST PAED.S	M-I	M-I	GRAND WARD TEST MEDICINE-I
BATCH C	OB.G.GYN.AE	OB.G.GYN.AE	GRAND WARD TEST OB.G.GYN.AE	S-I	S-I	GRAND WARD TEST SURGERY-I	S-II	S-II	GRAND WARD TEST SURGERY-II	PAED.S	PAED.S	GRAND WARD TEST PAED.S	M-I	M-I	GRAND WARD TEST MEDICINE-I	M-II	M-II	GRAND WARD TEST MEDICINE-II
BATCH D	S-I	S-I	GRAND WARD TEST SURGERY-I	S-II	S-II	GRAND WARD TEST SURGERY-II	PAED.S	PAED.S	GRAND WARD TEST PAED.S	M-I	M-I	GRAND WARD TEST MEDICINE-I	M-II	M-II	GRAND WARD TEST MEDICINE-II	OB.G.GYN.AE	OB.G.GYN.AE	GRAND WARD TEST OB.G.GYN.AE
BATCH E	S-II	S-II	GRAND WARD TEST SURGERY-II	PAED.S	PAED.S	GRAND WARD TEST PAED.S	M-I	M-I	GRAND WARD TEST MEDICINE-I	M-II	M-II	GRAND WARD TEST MEDICINE-II	OB.G.GYN.AE	OB.G.GYN.AE	GRAND WARD TEST OB.G.GYN.AE	S-I	S-I	GRAND WARD TEST SURGERY-I
BATCH F	PAED.S	PAED.S	GRAND WARD TEST PAED.S	M-I	M-I	GRAND WARD TEST MEDICINE-I	M-II	M-II	GRAND WARD TEST MEDICINE-II	OB.G.GYN.AE	OB.G.GYN.AE	GRAND WARD TEST OB.G.GYN.AE	S-I	S-I	GRAND WARD TEST SURGERY-I	S-II	S-II	GRAND WARD TEST SURGERY-II

Prepared by DME

Principal Prof.Dr.Gulfreeen Waheed

