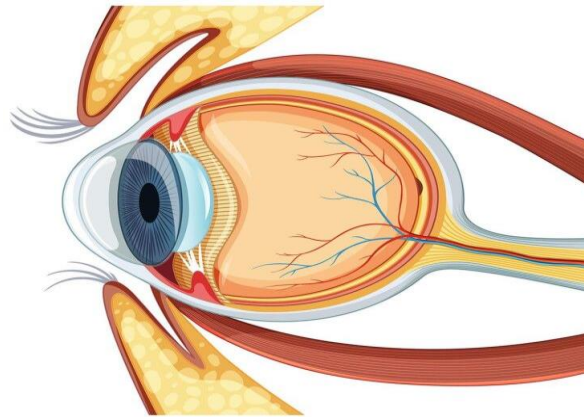




STUDY GUIDE

2024 -2025



| | |
|------------------|-----------------------------------|
| Program: | MBBS |
| Year: | 4 th Professional Year |
| Subject: | EYE |
| Batch No: | M-21 |
| Session: | 2024-2025 |

1. **Introduction to Study Guide**

- Objectives of the Study Guide.....1

2. **Avicenna Medical & Dental College Overview**

- Institutional Organogram.....2
- Vision and Mission.....2
- Messages:from the Principal.....3
- 7-Star Doctor Competencies (PMDC).....4
- About Medical College.....4

3. **Department & Subject Overview**

- Note from the Head of Department.....5
- Departmental Organogram.....5
- Faculty Members.....6
- Goal of the Department6
- Course Objectives.....7
- Attendance Requirement & Internal Assessment Criteria.....7

4. **Learning Resources & Pedagogy**

- Book Recommendations.....8
- Teaching Methodologies.....8
- Infrastructure Resources.....10
- Digital Library & Learning Management System.....12

5. **Assessment Guideline**

- Internal Assessment.....15
- External Assessment.....17
- Sample Questions.....18

6. **Curriculum Details**

- Curriculum Framework & Allocation of hours.....21
- Curricular Map & Rationale.....22
- Learning Outcomes & Table of Specifications (TOS).....27
- Academic Calendar / Annual Planner.....
- Block Timetable.....
- Test Schedules.....
- Pre-Clinical / Clinical / Ward Rotations / Community Visits Plan.....
- UHS Syllabus and Statutes.....

7. **Student's Policy**

- Refer to Policy Manual.....

Introduction to Study Guide

Welcome to the Avicenna Medical & Dental College Study Guide!

This guide serves as your essential resource for navigating the complexities of your medical education at Avicenna Medical & Dental College. It integrates comprehensive details on institutional framework, curriculum, assessment methods, policies, and resources, all meticulously aligned with UHS, PMDC and HEC guidelines.

Each subject-specific study guide is crafted through a collaborative effort between the Department of Medical Education and the respective subject departments, ensuring a harmonized and in-depth learning experience tailored to your academic and professional growth.

Objectives of the Study Guide



1. Institutional Understanding:

- Gain insight into the college's organizational structure, vision, mission, and graduation competencies as defined by PMDC, setting the foundation for your educational journey.

2. Effective Utilization:

- Master the use of this guide to enhance your learning, understanding the collaborative role of the Department of Medical Education and your subject departments, in line with PMDC standards.

3. Subject Insight:

- Obtain a comprehensive overview of your courses, including detailed subject outlines, objectives, and departmental structures, to streamline your academic planning.

4. Curriculum Framework:

- Explore the curriculum framework, academic calendar, and schedules for clinical and community rotations, adhering to the structured guidelines of UHS & PMDC.

5. Assessment Preparation:

- Familiarize yourself with the various assessment tools and methods, including internal exam and external exam criteria, and review sample papers to effectively prepare for professional exams.

6. Policies and Compliance:

- Understand the institutional code of conduct, attendance and assessment policies, and other regulations to ensure adherence to college standards and accrediting body requirements.

7. Learning Resources:

- Utilize the learning methodologies, infrastructure resources, and Learning Management System to maximize your educational experience and academic success.

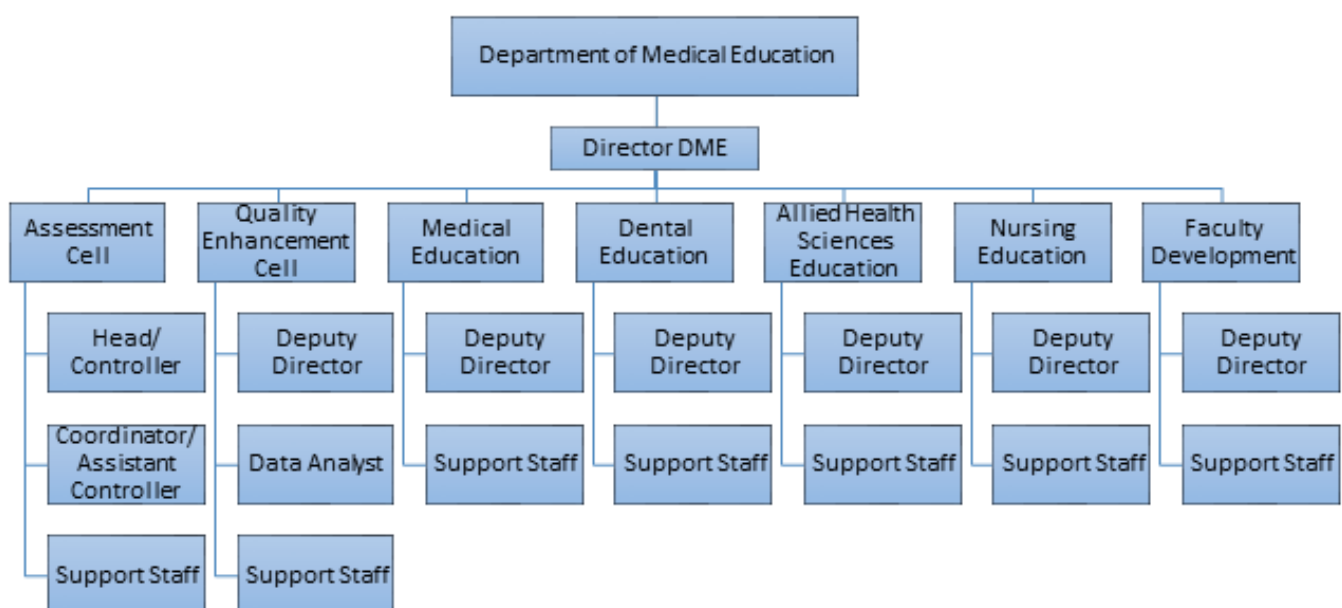
This guide, meticulously developed in collaboration with your subject departments, is designed to support your academic journey and help you achieve excellence in accordance with the highest standards set by PMDC and HEC.

DEPARTMENT OF MEDICAL EDUCATION

The Department of Medical Education (DME) serves as a cornerstone in delivering effective and high-quality education to both undergraduate and postgraduate medical and dental students. The DME is integral to the implementation and adoption of the latest curriculum provided by UHS and is responsible for organizing and managing related academic activities.

The DME will oversee the spirals of PERLs and C-FRC and monitor students' portfolio development and logbook completion. Additionally, the department is developing a mentoring platform and plans to initiate faculty development training which will focus on mentorship, reflective writing, and portfolio development skills. DME has a duty to collaborate with other disciplines to ensure that AVMDC students are not only competent in their respective fields but also well-trained in affective domains such as professionalism, ethics, research, and leadership.

A key responsibility of the DME is to plan and implement an effective training competency acquisition framework in collaboration with the academic council.



General Responsibilities of DME include:

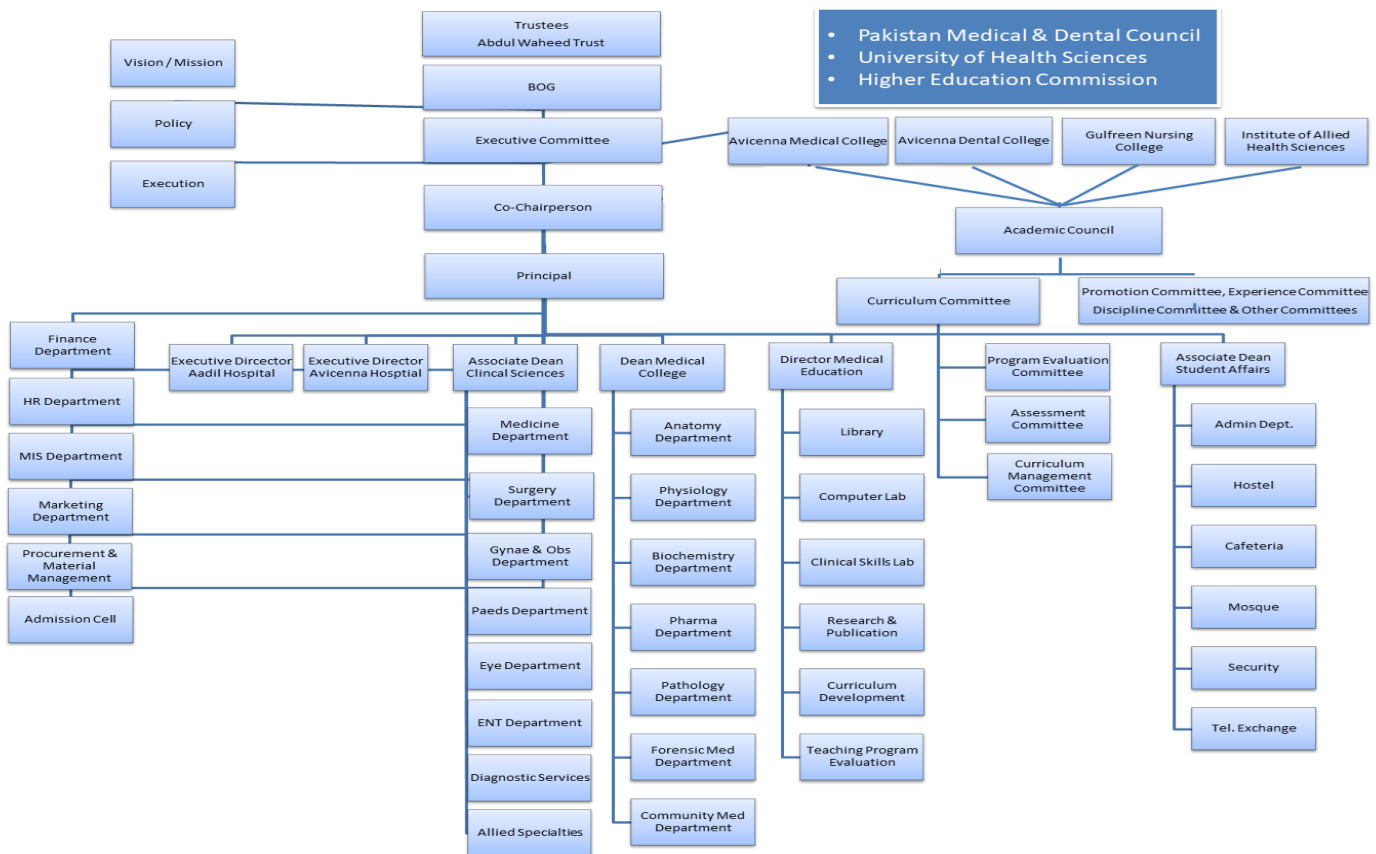
- Contribute and design, train the trainer activities which fulfill the need for undergraduate and postgraduate training.
- Shape and develop medical education research activities of the college.
- Facilitating & organizing workshops, seminars, symposia & conferences.
- Conducting CME activities to leverage culture of awareness, journal club.
- Networking by representing the college, when needed, in national /international meetings or conferences.
- Student counseling.
- Supervising students' academic progress.
- Academic Committees Development and Support.
- Staff Support and Development.
- Curriculum development and reform.
- Collaborate with curriculum committee and faculty members to develop quality instructional material such as modules, lecture, or study guides.

- Standard Operating Procedures for DME development.
- Skill lab management.
- Assessment analysis which includes blue printing, pre-exam review, item analysis and standard setting and provides feedback to concerned faculty and students on the learning outcome achievement.
- Develop and conduct periodical review of process of the program, learning and teaching activities, and assessment process.
- Identify opportunities for use of IT in teaching and learning, assessment and faculty development activities.
- Exam Cell management.
- Quality Assurance Cell management.
- Record keeping of departmental data.
- Leadership and management.
- Participation in overall planning and management of teaching in liaison with the departments.

| Faculty | Department |
|---|--------------------------|
| Assistant Director / Assistant Professor Medical Education | Dr. Saman Fatima |
| Coordinator Medical Education | Dr. Javaid Shabkhaiz Rab |
| Deputy Director / Demonstrator Dental Education | Dr. Salar Arsalan |
| Deputy Director / Demonstrator Allied Health Sciences | Dr. Talha |
| Deputy Director / Demonstrator Nursing Education | Dr. Muneeba |

Avicenna Medical & Dental College Overview

Institutional Organogram



Vision & Mission



Avicenna Medical & Dental College



Vision

The vision of **Avicenna Medical & Dental College** is to become a college that thrives to achieve improvement in healthcare of masses through creative delivery of educational programs, innovative research, commitment to public service and community engagement in a environment that supports diversity, inclusion, creative thinking, social accountability, life-long learning and respect for all.

Mission

The mission of **Avicenna Medical and Dental College** is to educate and produce competent, research oriented healthcare professionals with professional commitment and passion for life-long learning from a group of motivated students through quality education, research and service delivery for the

Message from the Chairman



The Avicenna Medical & Dental College is a project of Abdul Waheed Trust which is a Non-profitable, Non-governmental, Non-political & Social organization, working for the welfare of Humanity and based on Community empowerment. Avicenna Medical College has its own 530 bedded Avicenna teaching Hospital (Not for Profit hospital) within the College Campus & 120 bedded Aadil Hospital, at 15 minutes distance. Separate comfortable hostels for boys & girls are provided on the campus.

Our students benefit from the state of the art College Library with facilities of Internet & online Journals that remain open 15 hours a day, for our students & faculty members. I am particularly pleased with the hard work by the Faculty and Students in the achievement of historic 100% results for all the classes. It is a rare achievement and speaks of dedication of the Faculty and Staff. Our motto is Goodness prevails and we aim at producing Doctors' who are knowledgeable, competent in clinical skills and ethical values.

Avicenna Medical College & Hospital was founded to provide quality health care services to the deserving patients belonging to the rural areas near Avicenna Hospital as well as to provide quality medical education of international standard to our students. The Hospital provides all medical services and Lab diagnostics to the local population at minimal cost. So far by the grace of Allah Almighty the number of patients being treated and operated upon at our Hospital is increasing every day as there is no other public or charity hospital in the circumference of 20km. We have already established two Satellite Clinics in the periphery which are providing outdoor care while admission cases are brought to the Hospital in Hospital transport.

Following the success of our reputable Medical College and Hospital, we were able to successfully establish Avicenna Dental College which is recognized by the Pakistan medical & Dental Council & University of Health Sciences. To date, we have enrolled five batches in our dental college and we aim to achieve the same level of success for our dental students as our medical students.

Chairman

Abdul Waheed Sheikh

Avicenna Medical & Dental College

Message from the Principal

Prof. Dr. Gulfreen Waheed
Principal Medical College
MBBS, FCPS, MHPE, PHD Scholar, (HPE)



As a Co-Founder and Co-Chairperson, I have been involved in planning, construction and accreditation of Avicenna Medical College by the Pakistan Medical and Dental Council (PM&DC) and its affiliation with the esteemed University of Health Sciences (UHS). It is a pleasure to see Avicenna Medical College develop, progress and achieve maximum academic excellence in a short period since its inception in 2009. The institution has lived up to its mission of training and producing medical graduates of international standards. Three batches have passed out as Doctors, who currently are serving in the country and abroad while several have opted for post-graduation and are on road to progress. We have achieved several milestones since 2009 including the recognition of our College for FCPS training by College of Physicians and Surgeons of Pakistan (CPSP), establishment of College of Nursing and Avicenna Dental College

7-Star Doctor Competencies (PMDC)

According to national regulatory authority PMDC, a Pakistani medical/dental graduate who has attained the status of a 'seven-star doctor' is expected to demonstrate a variety of attributes within each competency. These qualities/ generic competencies are considered essential and must be exhibited by the individual professionally and personally.

1. Skillful / Care Provider.
2. Knowledgeable / Decision Maker.
3. Community Health Promoter / Community Leader.
4. Critical Thinker / Communicator
5. Professional / Lifelong learner.
6. Scholar / Researcher
7. Leader/ Role Model / Manager



About Avicenna Medical College

Avicenna Medical & Dental College is a purpose-built, fully equipped institution with experienced and excellence-driven faculty to train high-quality dental professionals in Pakistan.

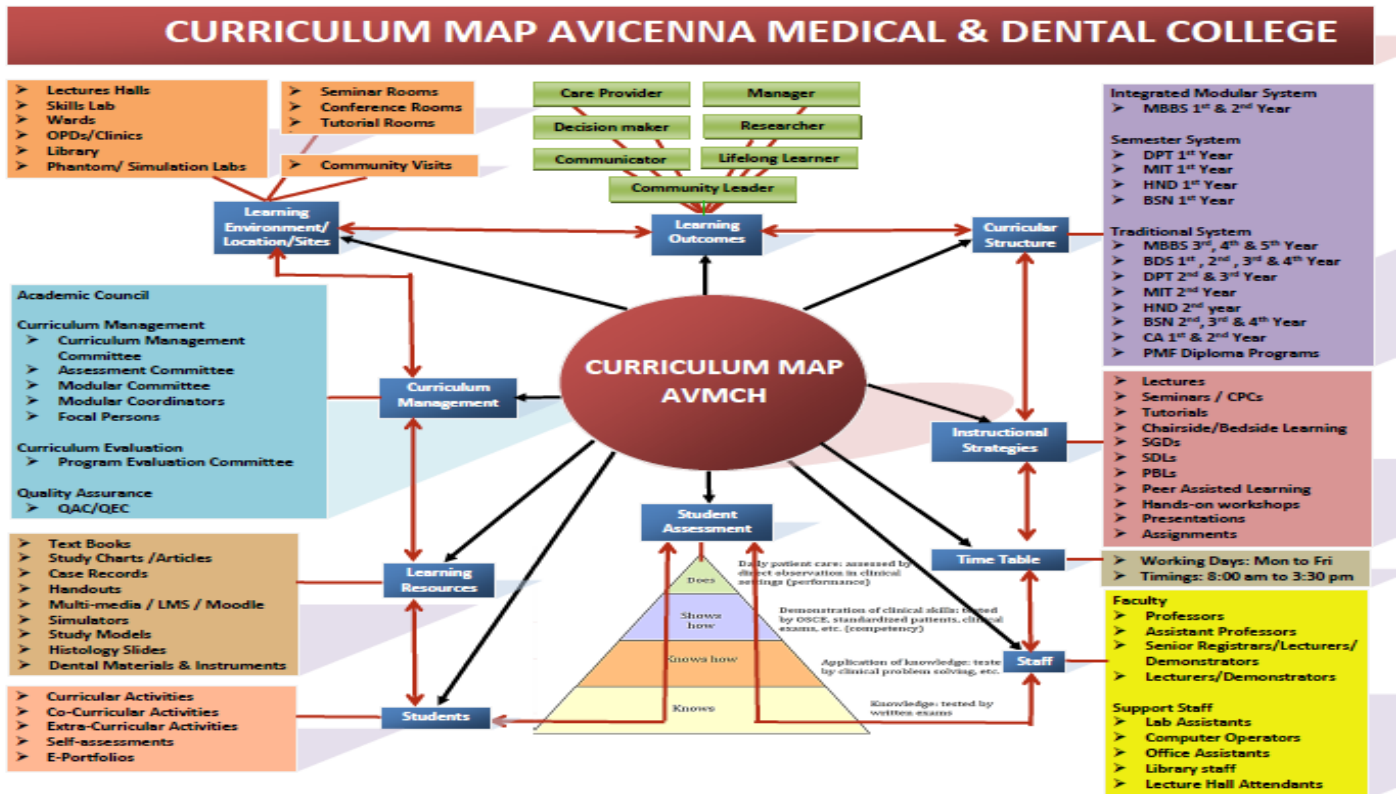
Avicenna Medical & Dental College runs under the umbrella of Abdul Waheed Trust. Abdul Wahid Trust is a non-profit social welfare organization and registered under the Societies Act with the Registrar of Societies. The Trust is legalized through a Trust Deed that bears necessary rectifications. The Trust Deed is further supported by its Memorandum and Article of Association that authorizes the establishment and operation of the Medical College, the Dental College, the Nursing College, the Allied Health Sciences College, and other activities in the healthcare sector.

In 2009, Avicenna Medical & Dental College was recognized by the Pakistan Medical & Dental Council. With the advent of advanced tools and technology in every field of health science, medicine today has shot up to the greater end of the gamut with superior choice and promises in medical therapy in the very vicinity of the common man. AVMDC promises to be one such neighborhood.



Curricular Map

This pictorial, vertical and horizontal presentation of the course content and extent shows the sequence in which various systems are to be covered. Curricular map to cover all the subjects and modules and the time allocated to study of the systems for the undergraduate programs offered at four colleges at campus are as follows:



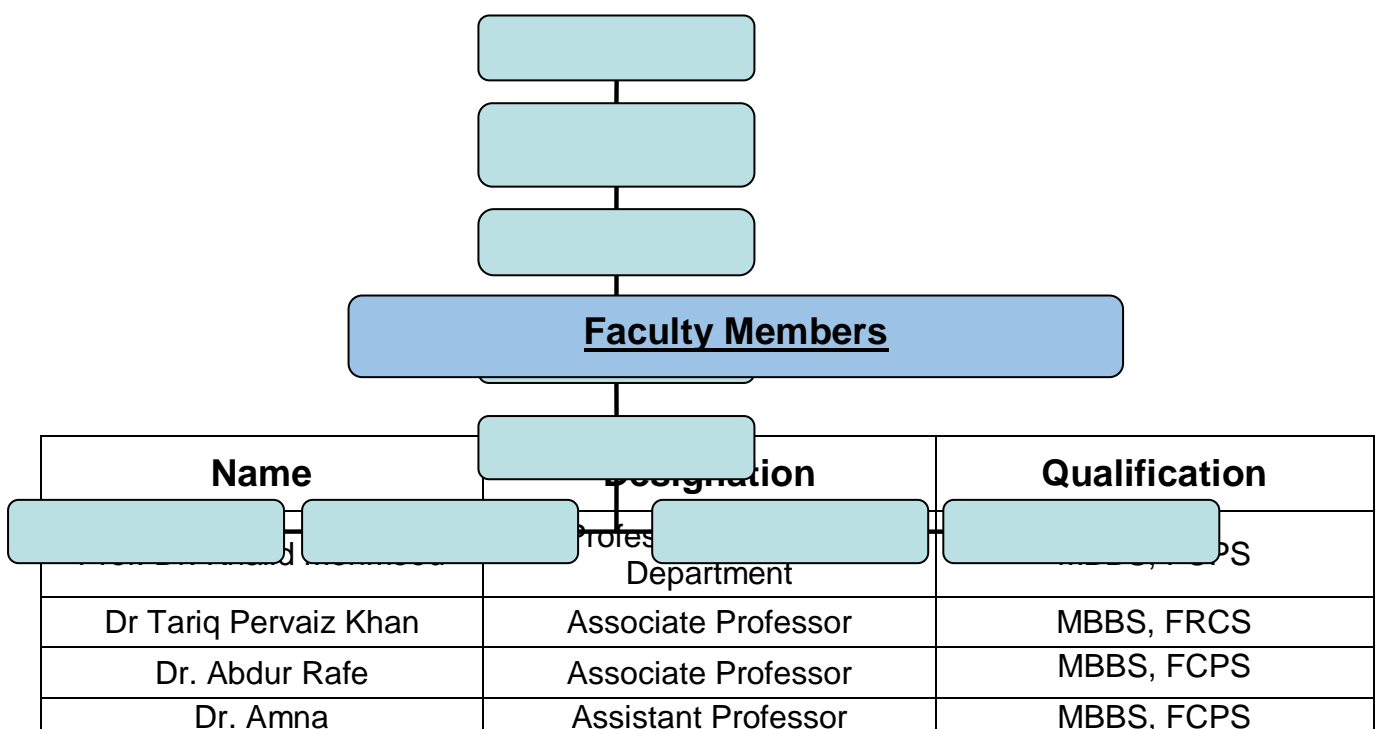
Department & Subject Overview

Message from the Head of Department

It is an honor to introduce Eye department Avicenna medical college and hospital as HOD. Our department is one of the most equipped departments in the town. We provide all ophthalmic services at the minimal cost including latest Phaco surgery, glaucoma and Oculoplastics. We have latest diagnostic tools i.e. OCT, angiography, visual fields and ophthalmic ultrasound. In addition we serve our patient almost free of cost for different lasers like YAG and Argon for the diseases of retina. We train our medical students and trainee doctors according to the latest international guidelines. It is a great reward that our medical students are among the best and serving all over the world.



Departmental Organogram (as per PMDC guidelines)



| | | |
|--------------------|---------------------|------------|
| Dr. Mehreen Sohail | Assistant Professor | MBBS, MCPS |
| Dr. Reyan | Senior Registrar | MBBS, MCPS |
| Dr. Arif | Registrar | MBBS |

Goal of the Department

To reduce avoidable blindness in the community by providing high quality, safe, & effective medical and surgical care in a setting that is warm and friendly to the public.

To make our services available in a timely and efficient manner for our patients.

To maintain a medical staff with exceptional training and experience to support the mission of the organization.

To communicate and updates freely and in a timely manner with the patients we serve.

To strengthen academic training and research program in campus.

Course Objectives

General Learning Objectives of the Ophthalmology Course:

To equip doctors with essential knowledge, skill and attitude in order to enable them to:

1. Identify ophthalmic diseases including emergencies, provide primary eye care, refer to the appropriate center and provide follow up to the patients.
2. Communicate effectively with the patient, the family and the community regarding eye diseases and its related issues
3. Understand medical ethics and its application pertaining to ophthalmology and maintaining confidentiality of the patient.
4. To understand the prevalence and prevention of the common public health problems related to

Attendance Requirement & Internal Assessment Criteria

The institution follows the regulations for examinations of the UHS in letter and spirit. The students require **85% attendance** in all academic sessions and **50% marks** in internal assessments and send-up examinations to be eligible for the UHS Professional Examinations.



Learning Resources & Pedagogy

Book Recommendations



| Sr. | Book Name | Author | Edition |
|-----|-----------|--------|---------|
|-----|-----------|--------|---------|

| | | | |
|----|--|----------------------------------|------------------|
| 1. | Parsons Diseases of the Eye | Sihota R | 22 nd |
| 2. | Basic Ophthalmology | Renu Jogi | 5th |
| 3. | Clinical Ophthalmology | Jatoi | 7th |
| 4. | Kanski's Clinical Ophthalmology | John F. Salmon | 9th |
| 5. | Clinical Anatomy of the Eye | Michael A. Lemp, Richard S Snell | 2nd |
| 6. | The Wills Eye Manual | Kalla A. Gervasio | 8th |
| 7. | | | |
| 8. | | | |

Traditional & Innovative Teaching Methodologies



| Sr. | Pedagogical Methodologies | Description |
|-----|---------------------------|---|
| 1. | Lectures | <p>Traditional method where an instructor presents information to a large group of students (large group teaching).</p> <p>This approach focuses on delivering theoretical knowledge and foundational concepts. It is very effective for introducing new topics.</p> |
| 2. | Tutorial | Tutorials involve small group discussion (SGD) where students receive focused instruction and guidance on specific topics. |
| 3. | Demonstrations | Demonstrations are practical displays of techniques or procedures, often used to illustrate complex concepts or practices, particularly useful in dental education for showing clinical skills. |
| 4. | Practicals | <p>Hands-on sessions where students apply theoretical knowledge to real-world tasks. This might include lab work, clinical procedures, or simulations.</p> <p>Practicals are crucial for developing technical skills and understanding the application of concepts in practice.</p> |
| 5. | Student Presentations | Students prepare and deliver presentations on assigned topics. This method enhances communication skills, encourages students to explore topic in-depth. It also provides opportunities for peer feedback and discussion. |
| 6. | Assignment | Tasks given to students to complete outside of class. Assignments can include research papers, case studies, or practical reports. They are designed to reinforce learning, assess understanding, and develop critical thinking and problem-solving skills. |
| 7. | Self-directed Learning | Students take initiative and responsibility for their own learning process. Students are encouraged to seek resources, set goals, and evaluate their progress. This is a learner-centered approach where students take the initiative to plan, execute, and assess their own learning activities. This method promotes independence, critical thinking, and lifelong learning skills. |
| 8. | Flipped Classroom | In this model, students first engage with learning materials at home (e.g., through videos, readings) and then use class time for interactive activities, discussions, or problem-solving exercises. This approach aims to maximize in-class engagement and application of knowledge. |

| | | |
|-----|------------------------------|--|
| 9. | Peer-Assisted Learning (PAL) | A collaborative learning approach where students help each other understand course material. PAL involves structured peer tutoring, study groups, or collaborative tasks. It enhances comprehension through teaching, reinforces learning, and builds teamwork skills. |
| 10. | Team-based Learning (TBL) | A structured form of small group learning where students work in teams on application-based tasks and problems. Teams are responsible for achieving learning objectives through collaborative efforts, promoting accountability, and deeper understanding of the material. |
| 11. | Problem-based Learning (PBL) | Students work on complex, real-world problems without predefined solutions. They research, discuss, and apply knowledge to develop solutions. PBL fosters critical thinking, problem-solving skills, and the ability to integrate knowledge from various disciplines. |
| 12. | Academic Portfolios | <p>A collection of student's work that showcases learning achievements, reflections, and progress over time.</p> <p>Portfolios include assignments, projects, and self-assessments. They provide a comprehensive view of student development, highlight strengths and areas for improvement, and support reflective learning (experiential learning)</p> |



Flipped Classroom

Infrastructure Resources

| Sr. | Infrastructure Resources | Description |
|-----|--------------------------|--|
| 1. | Lecture Hall | Each year has a dedicated lecture hall, totaling five lecture halls for the five professional years. These halls are equipped with modern audiovisual aids to support effective teaching and learning. |

| | | |
|-----|----------------------------------|---|
| 2. | Tutorial Room | The college's tutorial rooms, each with a capacity of 30, are specifically designed to support small group discussions and interactive sessions. These rooms facilitate personalized instruction, enabling more engaged and effective learning through direct interaction between students and instructors. |
| 3. | Lab | The college is equipped with state-of-the-art laboratories for practical and clinical work. Each lab is designed to support various disciplines, to facilitate hands-on learning. |
| 4. | Library on campus | A huge library occupies full floor has 260 seats including study carrels and group-discussion tables. Latest reference books, of Basic and Clinical Sciences along with national & international journals are available in the library. |
| 5. | Digital Library | The digital library offers access to a vast collection of e-books, online journals, research databases, and other digital resources. It supports remote access and provides tools for academic research and learning. |
| 6. | Learning Management System (LMS) | The LMS is a comprehensive online platform that supports course management, content delivery, student assessment, and communication. It provides tools for tracking progress, managing assignments, and facilitates ongoing academic activities. |
| 6. | Phantom Labs | Specialized Phantom Labs are available for advanced simulation and practice in dental procedures. These labs provide high-fidelity models and simulators that help students refine their clinical skills in a controlled environment. |
| 7. | Mess & Cafeteria | <p>The College has its own on-campus Mess which caters to 600 students. All food items including dairy, meat, and vegetables are sourced organically and bought in at the time of cooking, in order to ensure that students get freshly cooked meals at all times</p> <p>Students form the Mess committee which decides the mess menu in consultation with other students. The Mess offers fresh food to all residents three times a day. However, day scholars are also welcome to use the Mess facility at a reasonable cost.</p> <p>Two 50- inch LCD screens provide students an opportunity to get entertained during their meal times.</p> |
| 8. | Gymnasium & Sports | <p>We recognize sports as a pivotal key to shape and maintain students' personality and good health. The College has indoor and outdoor sports facilities to help enhance the cognition and capacity to learn. There is a proper sports section for various games like basketball, football, volleyball, and cricket.</p> <p>The gym itself is fully equipped with modern machinery both for students and faculty.</p> |
| 9. | IT Lab | The IT Lab is equipped with modern computers and software available for students who need access for academic purposes. |
| 10. | Auditorium | The college has a spacious auditorium equipped with advanced audio-visual facilities. It is used for large-scale lectures, guest presentations, and academic conferences, providing a venue for students to engage with experts and participate in important educational events. |

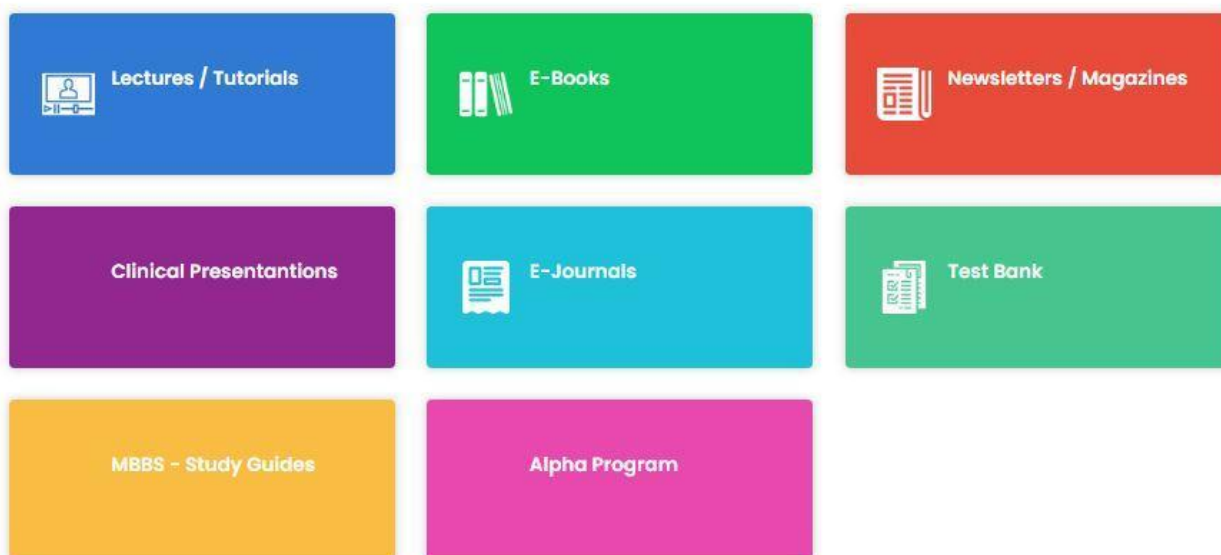
| | | |
|-----|-------------------|--|
| 11. | Examination Halls | The college provides dedicated examination halls that are designed to accommodate a large number of students comfortably. These halls are equipped with necessary facilities to ensure a smooth and secure examination process, including proper seating arrangements, monitoring systems, and accessibility features. |
|-----|-------------------|--|



Digital Library & Learning Management System (LMS)

1. The COVID-19 pandemic highlighted the necessity of interactive online teaching for better retention of topics by students. Strategies like online learning management system (LMS), online discussions, online quizzes, assignment design, and flipped learning enhance student engagement in online education when needed.
2. Avicenna Medical & Dental College lays emphasis on the provision of learning material and online video lectures, video tutorials in the e-library and learning resource center, which has a dedicated website of Avicenna Medical College to enable the students to develop concepts and clarify their doubts, if they have not been able to do so in the teaching sessions during college hours. The digital library can be approached on <http://digital.avicennamch.com/>.

Medical



3. The institution has also endeavored to link itself with the digital libraries and e-library of the University of Health Science (UHS) and Higher Education Commission (HEC) to enable the students to benefit from the valuable resource material, lectures and knowledge bank at these sites. The links are available with the HEC <http://www.digitallibrary.edu.pk/> and learning management system of UHS <http://lms.uhs.edu.pk> .
4. The Learning Management System (LMS) at Avicenna Medical & Dental College is a comprehensive platform managed by the Department of Student Affairs. It is designed to facilitate effective communication and information exchange between students, parents, faculty, and administrative staff. The LMS portals are specifically tailored to meet the needs of the following stakeholders:
 - a. **Students:** For academic resources and scheduling.
 - b. **Parents:** For monitoring academic progress and other relevant information.
 - c. **Faculty:** For managing course content and academic activities.
 - d. **Department of Student Affairs:** For overseeing administrative functions.
 - e. **Department of Medical/Dental Education:** For overseeing academic functions.

STUDENT PORTAL

AVICENNA MEDICAL & DENTAL COLLEGE

The Avicenna Medical & Dental College will live up to the name and reputation of "Abu Ali Sina Balkhi (Latin Name Avicenna)" and be a model of excellence for the quality and innovation of its education programs, clinical services and research. The institution will continually strive to exceed the expectations of its patients, students, residents, and local community by constantly improving the services it provides with enthusiasm, teamwork and creativity. In doing so, Avicenna Medical College aligns itself to the vision of its Affiliating University, i.e., University of Health Sciences.

[Visit Website](#)

Student Roll No.

 Password

☐ Remember me [Forgot Password?](#)

[Login](#)

Copyright © 2023. All rights reserved.

5. Students can access a comprehensive range of academic resources and information through the student portal. By logging in with their roll number and password, students can:

- Look at their attendance and results.
- Review academic activities and weekly timetables/schedules.
- Access rotation planners and test schedules.
- Check for any notification, assignment or resource material from their teachers.

6. The information to the parent is duplicated by the issuance of the password and login to the Students Learning Management System which is dedicated to the Academic Program of the students. The parents can view the following by logging in to the mobile app of Avicenna Student Management System:

- a) Syllabus
- b) Table of specifications
- c) Annual Planner
- d) Synopsis
- e) Block Time Table
- f) Weekly training program
- g) Allocation of Marks
- h) Assessment calendar
- i) Results of tests / exams*
- j) Students' attendance record
- k) Fees & fines

Assessment Guidelines

Assessment in medical & dental education is a critical component designed to ensure that medical & dental students acquire the necessary knowledge, skills, and competencies required for effective medical & dental practice.

Assessment drives learning! – George E. Millar

You will encounter a variety of assessment methods, each serving a specific purpose.

- Written examinations, including multiple-choice and essay questions, will test your grasp of theoretical concepts and subject matter.
- Practical assessments will require you to demonstrate your clinical skills and ability to apply knowledge in real-world scenarios.
- Clinical exams will evaluate your communication skills and reasoning abilities through case discussions and problem-solving exercises.
- Clinical skills and work-place based assessments will observe your hands-on proficiency and patient management capabilities.

At Avicenna Medical & Dental College, internal assessments are systematically conducted throughout each academic year of the MBBS program, as per the guidelines established by the University of Health Sciences (UHS). These assessments, overseen by the Assessment Cell, adhere to either the Annual Subject-Based System or the Integrated/Modular System, depending on the curriculum structure.

Notably, beginning with the 2024-25 academic year, the weightage of internal assessments will be increased from 10% to 20%. The UHS administers professional examinations independently, organizing them at designated neutral sites and appointing external examiners to ensure objectivity and fairness.

| | | |
|--------------------------------------|-----|-------|
| Internal Assessment Weightage | 10% | 100 % |
| External Assessment Weightage | 90% | |



Internal Assessment

How is Internal Assessment Calculated for your department?

| Internal Assessment | | Assessment Methods (MCQ/SEQ/OSCE/Viva/ Practical) | Percentage Weightage (write N/A where not applicable) |
|---------------------------|---------------------------|---|--|
| Session Exams | Early Session Exam | MCQs SEQs Viva OSPE | 70% |
| | Mid-term Session Exam | MCQs SEQs Viva OSPE | |
| | Late Session/Send up Exam | MCQs SEQs Viva OSPE | |
| Grand Tests | | MCQs SEQs Viva OSPE | 30% |
| Batch Clinical Assessment | | | N/A |
| Final Clinical Assessment | | MCQs SEQs Viva OSPE | 100% |
| Ward Test | Early Ward Test | Viva OSPE | 20% |
| | Mid Ward Test | Viva OSPE | 30% |

| | | | |
|------------------------|-----------------|------------------------------|------|
| | Grand Ward Test | MCQs SEQs Viva OSPE | 50% |
| Attendance & Behaviour | | | |
| | | | 100% |

1st Year MBBS Integrated Marking Scheme - 2023-24

BLOCK 1

| Form No. | MBBS-Form 1 | | | MBBS-Form 2 | | | |
|-------------------------|-------------------|-------------------|-------|---|--|---|-------|
| Mode Of Exam | Theory | | | Practical | | | |
| Weightage | 35% | | | 35% | | | |
| Subject | MCQs (1 marks) | SEQs (5 marks) | Marks | OSPE (8 marks) each observed station | OSCE (8 marks) each observed station | OSVE (16 marks) each observed station | Marks |
| Anatomy | 20 | 3 x 5 = 15 | 35 | 3 x 8 = 24 | - | 1 x 16 = 16 | 40 |
| Physiology | 22 | 2 x 5 = 10 | 32 | 2 x 8 = 16 | - | 1 x 16 = 16 | 32 |
| Biochemistry | 22 | 2x 5 = 10 | 32 | 2 x 8 = 16 | - | 1 x 16 = 16 | 32 |
| Pathology | 6 | - | 6 | - | - | - | - |
| Community Medicine | 5 | - | 5 | - | - | - | - |
| Behavioural Sciences | 5 | - | 5 | - | - | - | - |
| Pharmacology | 5 | - | 5 | - | - | - | - |
| CFRC | - | - | - | - | 1 x 8 = 8 | - | 8 |
| PERLs | - | - | - | - | 1 x 8 = 8 | - | 8 |
| Total | 85 | 7 x 5 = 35 | 120 | 7 x 8 = 56 | 2 x 8 = 16 | 3 x 16 = 48 | 120 |

External Assessment

What to expect in External Exam?

| External Assessment | Assessment Methods | Marks | Percentage Weightage |
|---|--------------------|-----------|----------------------|
| Theory <ul style="list-style-type: none"> • Total marks • Time | 45 MCQs 9 SEQs | 45 45 | 45 % |
| Practical <ul style="list-style-type: none"> • Total marks • Time | Viva OSCE | 40 50 | 45 % |
| Internal Assessment | | 20 | 10 % |
| Total marks | | 200 Marks | 100% |

Sample Paper

MCQ

AUTHOR: Dr. TARIQ KHAN
DATE: 09/01/2024
DISCIPLINE/SUBJECT: EYE
TOPIC: GLAUCOMA
LEVEL OF STUDENT: 4th Year MBBS
AREA: Diagnosis

Item Writing Template

Stem: A 43-year-old patient reported in eye clinic with blurred vision and pain in left eye. Slit-lamp examination of her left eye revealed moderate conjunctival injection, corneal edema, and shallow anterior chamber. The crystalline lens was clear, and the IOP measured 12 mm Hg OD and 48 mm Hg OS. Left pupil was mid dilated and non reactive.

Lead in: What is the most likely diagnosis

Option:

| |
|--|
| a) Open angle glaucoma |
| b) Acute angle closure glaucoma |
| c) Neovascular glaucoma |
| d) Uveitic glaucoma |

COGNITIVE LEVEL: Application
DIFFICULTY LEVEL: Moderate
IMPORTANCE: Must Know
REFERENCE: Kanski Clinical Ophthalmology 9th Ed

SEQ/SAQ

AUTHOR: Dr. TARIQ KHAN
DATE: 09/01/2024
DISCIPLINE/SUBJECT: EYE
TOPIC: LENS
LEVEL OF STUDENT: 4th Year MBBS
AREA: diagnosis & management

Scenario

A 60 years old lady presented with gradual painless decrease in visual acuity for the last one year. Her visual acuity in right eye was counting fingers and in left eye 6/36 not improving with refraction.

| Questions | Marks |
|---|-------|
| a) Write down the most likely diagnosis | 1 |
| b) Give your management plan for this patient | 4 |

| Key | Marks |
|---|-------|
| a) Senile Cataract | 1 |
| b) 1. Admit the patient after OPD workup 2. Slit lamp examination, Visual acuity, Fundoscopy, Biometry 3. Blood sugar, Hepatitis B&C workup 4. Phacoemulsification ECCE with posterior chamber IOL 5. Post op Systemic/ Topical Antibiotics and Steroids | 4 |

COGNITIVE LEVEL: Application
DIFFICULTY LEVEL: Moderate
IMPORTANCE: Must Know
REFERENCE: Kanski Clinical Ophthalmology 9th Ed

OSCE COVER SHEET

Station Title: Vision Assessment

Type of Station: Observed

Discipline / Specialty: EYE

Marks: 05

Class Level: 4th Year MBBS

Time: 05 min

Estimated difficulty: Medium

Exam: Early Session

Taxonomy level: Understanding & Application

List of resources required: 2 chairs, 1 table / desk, Pen torch

Instructions for the Candidate: Your task is to read the provided scenario below thoroughly and then provide answers to the questions listed for the examiner.

Scenario : A 30 years old lady presented in EYE OPD with sudden painful loss of vision in left eye.. Perform pupillary reaction test and interpret its result.

Key:

- | | |
|------------------------------------|----|
| 1. Introduction, Consent, Exposure | 01 |
| 2. Direct light reflex | 01 |
| 3. Indirect light reflex | 01 |
| 4. Swinging light reflex | 01 |
| 5. Interpretation | 01 |

CURRICULUM DETAILS

Curricular Framework including Allocation of Hours (PMDC)

| Basic & Clinical Medical Sciences / Preclinical & Para Clinical Years | | | |
|--|--|--|--------------------------------------|
| 1 st & 2 nd Professional Year | 3 rd Professional Year | 4 th Professional Year | 5 th Professional Year |
| Anatomy 500 Hours | General & Special Pathology 500 Hours | Eye 150 Hours | General Surgery 600 Hours |
| Physiology 450 Hours | Pharmacology 300 Hours | ENT 150 Hours | General Medicine 600 Hours |
| Biochemistry 250 Hours | Forensic Medicine & Toxicology 100 Hours | General & Special Pathology 500 Hours | Paediatrics 300 Hours |
| General Education 450 Hours <ul style="list-style-type: none"> • Quran Kareem – 50 Hours • Pakistan Studies / Ideology & Pakistan Constitution – 25 Hours • Islamiyat / Ethics – 25 Hours • Professionalism – 25 Hours • Communication Skills -25 Hours • English Expository Writing – 25 Hours • Arts & Humanities (One Course) - 25 Hours • Co-curricular activities – 200 Hours | Psychiatry & Beh. Sciences 150 Hours | Community Medicine & Public Health 200 Hours | OBS &Gynae 300 Hours |

| | | | |
|--|---|--|---|
| | <p>Pre-clinical Operative Dentistry 80 Hours</p> | <p>Research Methodology & Evidence Based Medicine 100 Hours</p> | <p>Surgical specialties 225 Hours</p> <ul style="list-style-type: none"> • Neurosurgery • Vascular surgery • Adult Cardiac surgery • Paediatrics surgery • Thoracic surgery • Plastic surgery |
| | | | <p>Medical specialties 225 Hours</p> <ul style="list-style-type: none"> • Neurology • Rheumatology • Geriatrics • Endocrinology • Paediatrics Cardiology • Infectious Diseases • Oncology |

Academic Planner



Avicenna Medical & Dental College

Calendar 2023- 2024

4th Year MBBS

| | January 2024 | | | | | | | | February 2024 | | | | | | | | March 2024 | | | | | | | SESSION START: 28th Feb, 2024 | |
|-------------|--------------|----|--------|----|-------|--------|----|----------------|---------------|--------|------------|--------|--------|--------|----|------------------|----------------|-------|-----------|--------|-------|--------|---|--|--|
| | Su | Mo | Tu | We | Th | Fr | Sa | | Su | Mo | Tu | We | Th | Fr | Sa | | Su | Mo | Tu | We | Th | Fr | Sa | Gazetted Holidays | |
| | | 1 | 2 | 10 | 4 | 5 | 6 | | | | | | 1 | 2 | 3 | 1 | | | | | | 1 | 2 | i- Kashmir Holiday - 3th Feb, 2024 | |
| | 7 | 8 | 9 | | 11 | 12 | 13 | | 4 | 13 | 6 | 7 | 8 | 9 | 10 | 2 | 3 | 4 | 5 | 6 | 7 EWT | 8 | 9 | ii- Pakistan Day - 23rd March, 2024 | |
| | 14 | 15 | 16 | 17 | 18 | 19 | 20 | | 11 | 12 | 13 | 14 | 15 | 16 | 17 | 3 | 10 | 11 | 12 | 13 | 14 | 15 | 16 | iii- Eid - Ul- Fitr- 8th April- 14th April, 2024 | |
| | 21 | 22 | 23 | 24 | 25 | 26 | 27 | | 18 | 19 | 20 | 21 | 22 | 23 | 24 | 4 | 17 | 18 | 19 | 20 | 21 | 22 MWT | 23 | iv- Labor Holiday- 1st May, 2024 | |
| | 28 | 29 | 30 | 31 | | | | 1 | 25 | 26 | 27 | 28 | 29 | | | 5 | 24 | 25 | 26 CM | 27 | 28 | 29 GW1 | 30 | v- Youm-e-Takbeer Holiday- 28th May, 2024 | |
| | | | | | | | | | | | | | | | | 6 | 31 | | | | | | | vi- Eid - Ul- Adha- 17th June- 19th June, 2024 | |
| | April 2024 | | | | | | | | May 2024 | | | | | | | | June 2024 | | | | | | | vii- Ashura- 16 & 17 July, 2024 | |
| | Su | Mo | Tu | We | Th | Fr | Sa | | Su | Mo | Tu | We | Th | Fr | Sa | | Su | Mo | Tu | We | Th | Fr | Sa | viii- Independence Day- 14th Aug, 2024 | |
| 6 | | 1 | 2 SP | 3 | 4 | 5 | 6 | 9 | | | | 1 | 2 | 3 MWT | 4 | 13 ESE | | | | | | | 1 Eye | ix- Rakhi Utsav- 15th Sep, 2024 | |
| Eid-ul-Fitr | 7 | 8 | 9 | 10 | 11 | 12 | 13 | 10 | 5 | 6 | 7 SP | 8 | 9 | 10 GW1 | 11 | 14 | 2 | 3 | 4 | 5 EWT | 6 | 7 | 8 | x- Good Friday- 25th Dec, 2024 | |
| 7 | 14 | 15 | 16 | 17 | 18 SP | 19 EWT | 20 | 11 | 12 | 13 | 14 CM | 15 | 16 EWT | 17 | 18 | 15 | 9 | 10 | 11 SP | 12 | 13 | 14 | 15 | Vacation | |
| 8 | 21 | 22 | 23 Eye | 24 | 25 | 26 | 27 | 12 ESE | 19 | 20 CM | 21 CM | 22 | 23 | 24 EWT | 25 | Eid-ul-Adha+Su.V | 16 | 17 | 18 | 19 | 20 | 21 | 22 | Spring Vacation- 7th April, 2024- 14th April, 2024 | |
| 9 | 28 | 29 | 30 | | | | | 13 ESE | 26 | 27 SP | 28 | 29 SP | 30 | 31 Eye | | Su.V | 23 | 24 | 25 | 26 | 27 | 28 | 29 | Summer Vacation- 15th June- 22nd July, 2024 | |
| | | | | | | | | | | | | | | | | Su.V | 30 | | | | | | Winter Vacation- 22nd Dec- 29th Dec, 2024 | | |
| | July 2024 | | | | | | | | August 2024 | | | | | | | | September 2024 | | | | | | | Events | |
| | Su | Mo | Tu | We | Th | Fr | Sa | | Su | Mo | Tu | We | Th | Fr | Sa | | Su | Mo | Tu | We | Th | Fr | Sa | White Coat Ceremony- 17 April, 2024 | |
| Su.V | | 1 | 2 | 3 | 4 | 5 | 6 | 17 | | | | | 1 | 2 GW1 | 3 | 22 MSE | 1 | 2 Eye | 3 Eye Q/V | 4 CM | 5 CM | 6 CM | 7 | Sports Day- 6 March, 2024 | |
| Su.V | 7 | 8 | 9 | 10 | 11 | 12 | 13 | 18 | 4 | 5 | 6 EWT | 7 | 8 | 9 | 10 | 23 MSE | 8 | 9 CM | 10 CM Q/V | 11 SP | 12 SP | 13 SP | 14 | Fun fair- 20th April, 2024 | |
| Su.V | 14 | 15 | 16 | 17 | 18 | 19 | 20 | 19 | 11 | 12 | 13 Eye | 14 | 15 | 16 | 17 | 24 MSE | 18 | 19 | 20 SP Q/V | 21 | 22 | 23 | 24 | Trips and Tours | |
| 16 | 21 | 22 | 23 | 24 | 25 | 26 MWT | 27 | 20 MSE | 18 | 19 | 20 SP | 21 | 22 EWT | 23 EWT | 24 | 25 | 22 | 23 | 24 CM | 25 | 26 | 27 GW1 | 28 | | |
| 17 | 28 | 29 | 30 CM | 31 | | | | 21 MSE | 25 | 26 EWT | 27 EWT Q/V | 28 Eye | 29 Eye | 30 | 31 | 26 | 29 | 30 | | | | | | Session Exam | |
| | October 2024 | | | | | | | | November 2024 | | | | | | | | December 2024 | | | | | | | Early Session- 20th May, 2024- 1st June, 2024 | |
| | Su | Mo | Tu | We | Th | Fr | Sa | | Su | Mo | Tu | We | Th | Fr | Sa | | Su | Mo | Tu | We | Th | Fr | Sa | Mid Session- 22nd Aug, 2024- 17th Sep, 2024 | |
| 26 | | | 1 | 2 | 3 | 4 | 5 | 30 | | | | | | 1 | 2 | 35 LSE/Send Up | 1 | 2 SP | 3 | 4 | 5 EWT | 6 Q/V | 7 | Late Session- 25th Nov, 2024- 11th Dec, 2024 | |
| 27 | 6 | 7 | 8 CM | 9 | 10 | 11 EWT | 12 | 31 | 3 | 4 | 5 EWT | 6 | 7 | 8 EWT | 9 | 36 CR | 8 | 9 Q/V | 10 Q/V | 11 Q/V | 12 | 13 | 14 | | |
| 28 | 13 | 14 | 15 SP | 16 | 17 | 18 MWT | 19 | 32 | 10 | 11 | 12 Eye | 13 | 14 | 15 MWT | 16 | CR | 15 | 16 | 17 | 18 | 19 | 20 | 21 | | |
| 29 | 20 | 21 | 22 | 23 | 24 | 25 GW1 | 26 | 33 | 17 | 18 | 19 | 20 | 21 | 22 GW1 | 23 | Winter Vaca. | 22 | 23 | 24 | 25 | 26 | 27 | 28 | | |
| 30 | 27 | 28 | 29 SP | 30 | 31 | | | 34 LSE/Send Up | 24 | 25 CM | 26 | 27 | 28 Eye | 29 | 30 | | 29 | 30 | 31 | | | | | | |

Allocation of Hours


| <div style="display: flex; justify-content: space-between; align-items: center;">  ALLOCAION OF CURRICULUM HOURS </div> | | | | | | | | | | | | |
|---|------------|------------|------------|------------|-------------|------------|-----------|---------------------------|------------------------|-------------------------------|-------------|------------|
| 4th YEAR MBBS | | | | | | | | | | | | |
| Subject Title | C.Rotation | Practical | Lecture | SDL | Field Visit | Assessment | CST | Evening clinical Rotation | Total Hours (33 Weeks) | Interactive Session (6 Weeks) | AVMC | PMDC |
| Community Medicine + Research | | 23 | 145 | 16.5 | 35 | 49.5 | | | 269 | 42 | 311 | 270 |
| Special Pathology | | 33 | 132 | 49.5 | | 49.5 | | | 264 | 48 | 312 | 250 |
| Eye | 33 | 33 | 66 | | | 49.5 | | | 181.5 | 33 | 214.5 | 150 |
| ENT | 33 | 33 | 66 | | | 49.5 | | | 181.5 | 33 | 214.5 | 150 |
| Medicine | 33 | | | 33 | | | 16.5 | 165 | 247.5 | 12 | 259.5 | |
| Surgery | 33 | | | 33 | | | 16.5 | 165 | 247.5 | 12 | 259.5 | |
| Paeds | 33 | | | | | | | | 33 | 6 | 39 | |
| Gynae | 33 | | | | | | | | 33 | 6 | 39 | |
| Islamiyat | | | | | | | | | | | | |
| Spare | | | | | | | | | | | | |
| Total | 198 | 122 | 409 | 132 | 35 | 198 | 33 | 330 | 1457 | 192 | 1649 | 820 |

Table of Specification

| Unit/ Chapter | Topic/ Content | Student Learning Objectives | Mode of Information (MOIT) | Learning Domain (KSA-Model) | Assessment Method (No. of Questions) | | | |
|------------------|---|--|--|--|---|------|------|---------------------------|
| | | | | | MCQS | SEQs | Viva | OSCE/OSPE or Practical |
| Conjunctiva | Anatomy + physiology and Diseases of the Conjunctiva | By the end of this topic, students will be able to: <ul style="list-style-type: none"> • To understand the applied aspect of anatomy and physiology • Classify and differentiate types of Conjunctivitis and degenerations • Summarize their pathogenesis, investigations and treatments | Lecture Tutorial Clinical Rotation | Knowledge (Cognitive C3) Skill (Pscyhomotor P3) Attitude (Effective A3) | 3 | 1 | ✓ | ✓ |

| | | | | | | | | |
|---------|--|---|--|----------------|---|---|---|---|
| Eyelids | Anatomy + physiology and Diseases of the Eyelids | <p>Students should be able to:</p> <ul style="list-style-type: none"> Recognize and recall the applied anatomy of the eye lids and functions Explain congenital abnormalities, oedema, Blepharitis, Stye, Internal hordeolum, Chalazion Explain the anomalies of position, Ptosis, Types, investigations, Psuedoptosis, Treatment Blepharospasm, Trichiasis, Entropion, Ectropion, Lagophthalmos Summarize and differentiate the tumours of the lid and their treatment modalities. Classify lid Injuries. Evert and examine the lids | Lecture Tutorial Clinical Rotation | C3 P3 A3 | 4 | 1 | ✓ | ✓ |
|---------|--|---|--|----------------|---|---|---|---|

| | | | | | | | | |
|------|--|--|--|----------------|---|---|---|---|
| Lens | Anatomy + physiology and Diseases of the Lens | <ul style="list-style-type: none"> ▪ Students should be able to: ▪ Define and discuss the crystalline lens ▪ Describe and discuss acquired Cataract – Age related, Congenital & Secondary Cataract. ▪ Discuss the management of Cataract ▪ Describe and discuss the steps of phacoemulsification/ECCE ▪ Describe and discuss the complications of Cataract Surgery and its management. | Lecture Tutorial Clinical Rotation | C3 P3 A3 | 5 | 1 | ✓ | ✓ |
|------|--|--|--|----------------|---|---|---|---|

| | | | | | | | | |
|---------------------|---|--|--|----------------|---|---|---|---|
| Ocular Therapeutics | | <ul style="list-style-type: none"> ▪ Students should be able to: ▪ Describe routes of administration of ophthalmic drugs ▪ State the factors responsible for the absorption of topical drugs. ▪ Classify Mydriatics & Cycloplegics ▪ Describe the Anti Glaucoma drugs and their modes of action, interpret their uses in clinical cases ▪ Describe Anti-inflammatory drugs and corticosteroids and their uses ▪ . Describe Anti-allergic drugs, Topical immunomodulators and their uses in clinical cases ▪ Describe the treatment and management of Dry eye, ▪ Describe the mode of action of Antibiotics, Antiviral, Antifungal and there uses in clinical scenarios. | Lecture Tutorial Clinical Rotation | C3 P2 A2 | 1 | X | ✓ | ✓ |
| Cornea | Drugs in Eye Mechanism of action , uses and side effects | | | | | | | |

| | | | | | | | | |
|--------|---|---|--|----------------|---|---|---|---|
| Sclera | Anatomy + physiology and Diseases of the Cornea | <ul style="list-style-type: none"> ▪ Students should be able to: ▪ Define and discuss Anatomy and Examination of the cornea ▪ Describe and discuss Microbial Keratitis, its causes, pathogenesis, investigations and treatment modalities. ▪ Describe and discuss Fungal Keratitis, its causes, pathogenesis, investigations and treatment modalities. ▪ Describe and discuss Viral Keratitis, its causes, pathogenesis, investigations and treatment modalities. ▪ Describe and discuss Corneal degenerations and dystrophies ▪ Describe and discuss Corneal refractive surgery & Corneal Transplant, its indications, procedure and management of complications. ▪ Test corneal sensation | Lecture Tutorial Clinical Rotation | C3 P2 A3 | 4 | 1 | ✓ | ✓ |
|--------|---|---|--|----------------|---|---|---|---|

| | | | | | | | | |
|--|--|--|--|----------------|---|---|---|---|
| | Anatomy + physiology and Diseases of the Sclera | <ul style="list-style-type: none"> ▪ Students should be able to: ▪ Define and discuss the Anatomy of the sclera and Episclera ▪ Describe and discuss Scleritis, its causes, pathogenesis, investigations and treatment modalities. ▪ Describe and discuss Episcleritis, its causes, pathogenesis, investigations and treatment modalities. ▪ Differentiate between Scleritis and Episcleritis. ▪ Describe and discuss Scleromalacia Perforans, blue sclera, Staphylomas, tumors and their management | Lecture Tutorial Clinical Rotation | C3 P2 A2 | 1 | X | ✓ | ✓ |
|--|--|--|--|----------------|---|---|---|---|

| | | | | | | | | |
|-------------|---|---|--|----------------|---|---|---|---|
| Glaucoma | Anatomy + physiology of aqueous production and pathway and Diseases by Glaucoma | <ul style="list-style-type: none"> Students should be able to Define Glaucoma Classify Glaucoma Describe and discuss Angle Closure Glaucoma, its causes, pathogenesis, investigations and treatment modalities Describe and discuss POAG, its causes, pathogenesis, investigations and treatment modalities. Describe and discuss Childhood Glaucoma, its causes, pathogenesis, investigations and treatment modalities Define and discuss Gonioscopy & Perimetry Discuss Glaucoma Surgery, the different modalities. | Lecture Tutorial Clinical Rotation | C3 P3 A3 | 3 | 1 | ✓ | ✓ |
| Uveal Tract | | <ul style="list-style-type: none"> Measure intra-ocular pressure manually | | | | | | |

| | | | | | | | | |
|------------|--|---|--|----------------|---|---|---|---|
| Strabismus | Anatomy + physiology and Diseases of the Uveal tract | <ul style="list-style-type: none"> ▪ Students should be able to ▪ Define and discuss the anatomy of the Uveal Tract. ▪ Classify Uveitis, and describe its types ▪ Discuss the etiology, Pathogenesis. ▪ Describe Anterior Uveitis, Its types, its causes, pathogenesis, investigations and treatment modalities. ▪ Describe Posterior Uveitis, its causes, pathogenesis, investigations and treatment modalities. ▪ Discuss the Differential diagnosis of various types of Uveitis ▪ Discuss the Investigations, Treatment ▪ Describe and discuss Fuch's Uveitis syndrome & Ulcerative Colitis. ▪ Describe and discuss Sympathetic Uveitis, its causes, pathogenesis, investigations and treatment modalities. ▪ Describe and discuss Lens induced uveitis, Toxoplasmosis, TB, HZV Sarcoidosis | Lecture Tutorial Clinical Rotation | C3 P2 A3 | 3 | 1 | ✓ | ✓ |
|------------|--|---|--|----------------|---|---|---|---|

| | | | | | | | |
|--|--|---|-------------------------|----------|----------|----------|----------|
| | <p>Anatomy + physiology and Diseases of the Ocular motility disorders</p> <ul style="list-style-type: none"> ▪ Students should be able to: ▪ Define Sherrington and Herring Law ▪ Classify Squint and differentiate it from pseudo squint ▪ Describe the Diagnostic tests required to diagnose Squint ▪ Define and discuss the different Treatment modalities. ▪ Describe and Discuss Manifest Squint, its types, concomitant & paralytic. ▪ Describe and discuss Infantile Esotropia ▪ Describe and discuss Exotropias and Esotropias ▪ Define and discuss Measurement and Assessment of squint ▪ Enumerate and discuss the different Treatment modalities. ▪ Describe and discuss Paralytic Squint, its signs, etiology ▪ Define and discuss Diplopia, Primary & secondary Deviation, its investigations and treatment ▪ Describe and discuss the Special Syndromes, A&V pattern, Duane's, Brown's, Mobius, Strabismus fixus, Kinetic Strabismus, Restrictive | <p>Lecture Tutorial Clinical Rotation</p> | <p>C3 P2 A3</p> | <p>3</p> | <p>1</p> | <p>✓</p> | <p>✓</p> |
|--|--|---|-------------------------|----------|----------|----------|----------|

| | | | | | | | | |
|-------------------------|--|--|--|--|--|--|--|--|
| Lacrimonal Apparatus | | Strabismus. Ocular palsies, Amblyopia, Therapy. | | | | | | |
|-------------------------|--|--|--|--|--|--|--|--|

| | | | | | | | | |
|------------|--|--|--|----------------|---|---|---|---|
| Refraction | Anatomy + physiology and Diseases of the Lacrimal system | <ul style="list-style-type: none"> ▪ Students should be able to: ▪ Define and discuss the anatomy & Physiology of the tear film ▪ Classify dry eye, its causes, pathogenesis, investigations and treatment modalities. ▪ Describe and discuss Sjogren Syndrome. ▪ Describe and enumerate the Investigation of dry eye ▪ Schirmer test ▪ Define and discuss the Lacrimal Drainage system ▪ Describe the Causes of watery eyes, and evaluation of epiphora. ▪ Describe and discuss Congenital NLD obstruction ▪ Describe and discuss Acute dacryocystitis, its causes, pathogenesis, investigations and treatment modalities. ▪ Describe and discuss Chronic dacryocystitis, its causes, pathogenesis, investigations and treatment modalities ▪ . Discuss Conventional DCR, EDCR ▪ Describe and discuss Lacrimal gland tumours | Lecture Tutorial Clinical Rotation | C3 P2 A2 | 2 | X | ✓ | ✓ |
|------------|--|--|--|----------------|---|---|---|---|

| | | | | | | | | |
|--------|-------------------------------------|--|--|----------------|---|---|---|---|
| Retina | Visual Optics and refractive errors | <ul style="list-style-type: none"> ▪ Students should be able to: ▪ Define Optics ▪ Define and discuss Myopia, its Clinical Features & management, Refractive Surgery ▪ Define and discuss Hypermetropia, its types, Clinical features, management ▪ Define and discuss Astigmatism, its types, Clinical Features, Management ▪ Define and discuss Aphakia and its management ▪ Define and discuss Accomodation and its anomalies ▪ Define and discuss Presbyopia ▪ Define and discuss Cycloplegic Refraction, AC-A Ratio. | Lecture Tutorial Clinical Rotation | C3 P2 A3 | 1 | X | ✓ | ✓ |
|--------|-------------------------------------|--|--|----------------|---|---|---|---|

| | | | | | | | | |
|----------|---|--|--|----------------|---|---|---|---|
| Vitreous | Anatomy + physiology and Diseases of the Retina | <ul style="list-style-type: none"> ▪ Students should be able to: ▪ Define and discuss the Anatomy of the retina ▪ Describe and discuss Retinopathies of DM and HT; Eale's, its causes, pathogenesis, investigations and treatment modalities. ▪ Describe and discuss Vascular Disorders of the Retina – CRAO, CRVO; ROP ▪ Define and discuss Retinal Detachment and its treatment and management. ▪ Describe and discuss Retinal Dystrophies and their management. ▪ Describe and discuss RP & Retinoblastoma, its causes, pathogenesis, investigations and treatment modalities. | Lecture Tutorial Clinical Rotation | C3 P2 A2 | 4 | 1 | ✓ | ✓ |
|----------|---|--|--|----------------|---|---|---|---|

| | | | | | | | | |
|------------------------|---|--|--|----------------|---|---|---|---|
| Optic Nerve and Neuro- | Anatomy + physiology and Diseases of the Vitreous | <ul style="list-style-type: none"> ▪ Students should be able to: ▪ Define and discuss the Anatomy of the vitreous ▪ Describe and discuss Vitreous Haemorrhage, its causes, pathogenesis, investigations and treatment modalities. ▪ Describe and discuss Vitreous Detachment, and vitreous opacities ▪ Describe and discuss PHPV ▪ Describe and discuss Vitreous surgeries | Lecture Tutorial Clinical Rotation | C3 P2 A2 | 1 | X | ✓ | ✓ |
|------------------------|---|--|--|----------------|---|---|---|---|

| | | | | | | | | |
|---------------|--|---|--|----------------|---|---|---|---|
| Ophthalmology | Anatomy + physiology and Diseases of the optic nerve and visual pathways | <ul style="list-style-type: none">▪ Students should be able to:▪ Define and discuss the anatomy of the Optic Nerve▪ Describe and discuss its Diseases, congenital, inflammations, vascular, degenerative, tumours.▪ Describe and discuss Optic Neuritis & Papillitis, its causes, pathogenesis, investigations and treatment modalities.▪ Describe and discuss Retro bulbar Optic Neuritis, its causes, pathogenesis, investigations and treatment modalities.▪ Describe and discuss Pappiloedema, its etiology, pathogenesis, signs & symptoms, Differential Diagnosis, treatment.▪ Describe and discuss Tumors▪ . Describe and discuss Optic Atrophy | Lecture Tutorial Clinical Rotation | C3 P2 A2 | 4 | X | ✓ | ✓ |
| Orbit | | | | | | | | |

| | | | | | | | | |
|--|--|--|--|----------------|---|---|---|---|
| | Anatomy + physiology and Diseases of the Orbit | <ul style="list-style-type: none"> ▪ Students should be able to: ▪ Define and discuss the Anatomy of the orbit ▪ Describe and discuss Proptosis & Exophthalmos its causes, pathogenesis, investigations and treatment modalities. ▪ Describe and discuss Orbital Cellulitis its causes, pathogenesis, investigations and treatment modalities. ▪ Describe and discuss Cavernous Sinus Thrombosis, its causes, pathogenesis, investigations and treatment modalities. ▪ Describe and discuss Tumours & Injuries | Lecture Tutorial Clinical Rotation | C3 P2 A2 | 3 | 1 | ✓ | ✓ |
|--|--|--|--|----------------|---|---|---|---|

| | | | | | | | | |
|---------------|--|--|--|----------------|----|---|---|---|
| Ocular Trauma | Ocular injuries Mechanism and Treatment | <ul style="list-style-type: none"> ▪ Students should be able to: ▪ Describe and discuss Eyelid trauma, its causes and treatment modalities ▪ Describe and discuss Orbital trauma, causes and treatment modalities ▪ Describe and discuss Trauma to the globe, causes and treatment modalities ▪ Describe and discuss Chemical injuries, causes and treatment modalities | Lecture Tutorial Clinical Rotation | C3 P2 A2 | 3 | X | ✓ | ✓ |
| | | | | | | | | |
| | | TOTAL | | | 45 | 9 | | |

Clerkships



Avicenna Medical College

Final Year MBBS M-19

Ward Test Schedule

| CLINICAL ROTATION DURATION | CLINICAL ROTATION - 1 1-April-24 to 11-May-24 | | GRAND WARD TEST-1 | CLINICAL ROTATION - 2 14-May-24 to 11-June-24 | | GRAND WARD TEST-2 | CLINICAL ROTATION - 3 22-July-24 to 7-Sep-24 | | GRAND WARD TEST-3 | CLINICAL ROTATION - 4 10-Sep-24 to 12-Oct-24 | | GRAND WARD TEST-4 | CLINICAL ROTATION - 5 15-Oct-24 to 7-Dec-24 | | GRAND WARD TEST-5 | CLINICAL ROTATION - 6 10-Dec-24 to 18-Jan-25 | | GRAND WARD TEST-6 |
|----------------------------|--|---------------|-----------------------------|--|---------------|-----------------------------|---|---------------|-----------------------------|---|---------------|-----------------------------|--|---------------|-----------------------------|---|---------------|-----------------------------|
| TEST DATE: | Early Ward Test | Mid Ward Test | | Early Ward Test | Mid Ward Test | | Early Ward Test | Mid Ward Test | | Early Ward Test | Mid Ward Test | | Early Ward Test | Mid Ward Test | | Early Ward Test | Mid Ward Test | |
| | 19-Apr-24 | 3-May-24 | 13 May, 2024 | 24-May-24 | 7-June-24 | 12 June, 2024 | 16-Aug-24 | 30-Aug-24 | 9 Sep, 2024 | 20-Sep-24 | 4-Oct-24 | 14 Oct 2024 | 15-Nov-24 | 29-Nov-24 | 9 Dec, 2024 | 20-Dec-24 | 10-Jan-25 | 20 Jan 2025 |
| BATCH: A | M-I | M-I | GRAND WARD TEST MEDICINE -I | M-II | M-II | GRAND WARD TEST MEDICINE-II | OBG.GYNAE | OBG.GYN AE | GRAND WARD TEST OBG.GYNAE | S-I | S-I | GRAND WARD TEST SURGERY-I | S-II | S-II | GRAND WARD TEST SURGERY-II | PAEDS | PAEDS | GRAND WARD TEST PAEDS |
| BATCH: B | M-II | M-II | GRAND WARD TEST MEDICINE-II | OBG.GYNAE | OBG.GYN AE | GRAND WARD TEST OBG.GYNAE | S-I | S-I | GRAND WARD TEST SURGERY-I | S-II | S-II | GRAND WARD TEST SURGERY-II | PAEDS | PAEDS | GRAND WARD TEST PAEDS | M-I | M-I | GRAND WARD TEST MEDICINE -I |
| BATCH: C | OBG.GYNAE | OBG.GYN AE | GRAND WARD TEST OBG.GYNAE | S-I | S-I | GRAND WARD TEST SURGERY-I | S-II | S-II | GRAND WARD TEST SURGERY-II | PAEDS | PAEDS | GRAND WARD TEST PAEDS | M-I | M-I | GRAND WARD TEST MEDICINE -I | M-II | M-II | GRAND WARD TEST MEDICINE-II |
| BATCH: D | S-I | S-I | GRAND WARD TEST SURGERY-I | S-II | S-II | GRAND WARD TEST SURGERY-II | PAEDS | PAEDS | GRAND WARD TEST PAEDS | M-I | M-I | GRAND WARD TEST MEDICINE -I | M-II | M-II | GRAND WARD TEST MEDICINE-II | OBG.GYNAE | OBG.GYNAE | GRAND WARD TEST OBG.GYNAE |
| BATCH: E | S-II | S-II | GRAND WARD TEST SURGERY-II | PAEDS | PAEDS | GRAND WARD TEST PAEDS | M-I | M-I | GRAND WARD TEST MEDICINE -I | M-II | M-II | GRAND WARD TEST MEDICINE-II | OBG.GYN AE | OBG.GYNAE | GRAND WARD TEST OBG.GYNAE | S-I | S-I | GRAND WARD TEST SURGERY-I |
| BATCH: F | PAEDS | PAEDS | GRAND WARD TEST PAEDS | M-I | M-I | GRAND WARD TEST MEDICINE -I | M-II | M-II | GRAND WARD TEST MEDICINE-II | OBG.GYNAE | OBG.GYN AE | GRAND WARD TEST OBG.GYNAE | S-I | S-I | GRAND WARD TEST SURGERY-I | S-II | S-II | GRAND WARD TEST SURGERY-II |

Prepared by DME

Principal Prof.Dr.Gulfreem Waleed

Assessment Schedule



Avicenna Medical College

4th Year MBBS (M-20)

1st Term Test Schedule

| Week | Date | Day | Subject | Test | Topic | Reference |
|------|-----------|-----------|-----------------|------------------------------------|--|---------------------------------------|
| 1st | 28-Feb-24 | Wed | SESSION START | | | |
| 2nd | 5-Mar-24 | Tue | All Subjects | Lecture | Lecture Time Divided | |
| | 7-Mar-24 | Thus | Early Ward Test | | | |
| 3rd | 12-Mar-24 | Tue | All Subjects | Lecture | Lecture Time Divided | |
| 4th | 19-Mar-24 | Tue | All Subjects | Lecture | Lecture Time Divided | |
| | 22-Mar-24 | Fri | Mid Ward Test | | | |
| 5th | 26-Mar-24 | Tue | Com.Medicine | Grand Test+ Key Discussion+Viva | Concept of health & disease. PHC & International Health, NCDs | K.Park Pg13- 63, 365- 392, 143-152 |
| | 27-Mar-24 | Wed | Com.Medicine | OSPE | | |
| | | 29-Mar-24 | Fri | Grand Ward Test-1 | | |

| | | | | | | |
|--|-----------|------|-----------------|------------------------------------|------------------------------------|------------------------------------|
| 6th | 2-Apr-24 | Tue | Sp.Pathology | Grand Test+ Key Discussion+Viva | GT.1 - GIT, HBS | Robin's 10th Ed (731-819, 832-879) |
| | 3-Apr-24 | Wed | Sp.Pathology | OSPE | | |
| Eid- Ul- Fitr Holidays:7th April-14th April,2024 | | | | | | |
| 7th | 16-Apr-24 | Tue | All Subjects | Lecture | Lecture Time Divided | |
| | 18-Apr-24 | Thus | Sp.Pathology | Repeat Grand Test | GT.1 - GIT, HBS | Robin's 10th Ed (731-819, 832-879) |
| | 19-Apr-24 | Fri | Early Ward Test | | | |
| 8th | 23-Apr-24 | Tue | EYE | Grand Test+ Key Discussion+Viva | Lid, cconjunctiva , Lens & Uveitis | Parson 22nd ed |
| | 24-Apr-24 | Wed | EYE | OSPE | | |
| 9th | 30-Apr-24 | Tue | DAY OFF | | | |
| | 1-May-24 | Wed | DAY OFF | | | |
| | 3-May-24 | Fri | Mid Ward Test | | | |

| | | | | | | |
|--|-----------|-----|-------------------|------------------------------------|---|---|
| 10th | 7-May-24 | Tue | Sp.Pathology | Grand Test+ Key Discussion+Viva | GT.2 - CVS, Lung | Robin's 10th Ed (485-582, 673-729, 739-744) |
| | 8-May-24 | Wed | Sp.Pathology | OSPE | | |
| | 10-May-24 | Fri | Grand Ward Test-2 | | | |
| 11th | 14-May-24 | Tue | Com.Medicine | Grand Test+ Key Discussion+Viva | Epidemiology, Screening, Demography | K.Park 234rd Ed. Ch3, 4 & 8 |
| | 15-May-24 | Wed | Com.Medicine | OSPE | | |
| | 16-May-24 | Thu | ENT | Grand Test+ Key Discussion+Viva | Nose & PNS, Oral Cavity, Salivary Glands, Op Sur Nose | Dhingra Chp 23-46, 84-90 |
| | 17-May-24 | Fri | ENT | OSPE | | |
| Early Session Exam: 20th May,2024- 31st May,2024 | | | | | | |
| 12th | 20-May-24 | Mon | Com.Medicine | ESE | Concept of HD, International H, Primary Health care, NCDs, EPIDEMIOLOGY, Screening, Demography | K. park CH # 2, 3, 4, 6, 8, 21 & 22 |
| 12th | 21-May-24 | Tue | Com.Medicine | OSPE/ Viva | | |
| 12th | 22-May-24 | Wed | DAY OFF | | | |
| 12th | 23-May-24 | Thu | DAY OFF | | | |

| | | | | | | |
|-----------------|-----------|-----|--|--------------------|--|------------------------------|
| 12th | 24-May-24 | Fri | ENT | ESE/ OSPE/ Viva | Nose & PNS, Oral Cavity, Salivary Glands, Op Sur Nose | Dhingra Chp 23-46, 84- 90 |
| 12th | 25-May-24 | Sat | DAY OFF | | | |
| 13th | 26-May-24 | Sun | DAY OFF | | | |
| 13th | 27-May-24 | Mon | Sp.Pathology | ESE | Entire Syllabus Covered | Entire Syllabus Covered |
| 13th | 28-May-24 | Tue | 28th May,2024 : Youm-e-Takbeer Holiday | | | |
| 13th | 29-May-24 | Wed | Sp.Pathology | OSPE/ Viva | Entire Syllabus Covered | Entire Syllabus Covered |
| 13th | 30-May-24 | Thu | OFF | | | |
| 13th | 31-May-24 | Fri | EYE | OSPE/ Viva | Entire Syllabus Covered | |
| 13th | 1-Jun-24 | Sat | EYE | ESE | | |
| End Of 1st Term | | | | | | |



Avicenna Medical College

4thYear MBBS (M-20)

2nd Term Test Schedule

| Week | Date | Day | Subject | Test | Topic | Reference |
|---|-----------|----------|-----------------|------------------------------------|-----------------------|--------------------------------------|
| 14th | 4-Jun-24 | Tue | All Subjects | Lecture | Lecture Time Divided | |
| | 5-Jun-24 | Wed | Early Ward Test | | | |
| 15th | 11-Jun-24 | Tue | Sp.Pathology | Grand Test+ Key Discussion+Viva | GT3 Hem, Breast | Robin's 10th Ed (583-672, 1038-1063) |
| | 12-Jun-24 | Wed | Sp.Pathology | OSPE | | |
| Eid- Ul- Adha+Summer Vacations:15th June - 21st July,2024 | | | | | | |
| 16th | 23-Jul-24 | Tue | All Subjects | Lecture | Lecture Time Divided | |
| | 24-Jul-24 | Wed | All Subjects | Lecture | Lecture Time Divided | |
| | 26-Jul-24 | Fri | Mid Ward Test | | | |
| 17th | 30-Jul-24 | Tue | Com.Medicine | Grand Test+ Key Discussion+Viva | Communicable Diseases | CH # 5 |
| | 31-Jul-24 | Wed | Com.Medicine | OSPE | | |
| | | 2-Aug-24 | Fri | Grand Ward Test-3 | | |

| | | | | | | |
|--|-----------|-----|---------------------------------|------------------------------------|--|---|
| 18th | 6-Aug-24 | Tue | ENT | Grand Test+ Key Discussion+Viva | Ear + Ear Op Sur | Dhingra Chp No. 1-22, 78-83 |
| | 7-Aug-24 | Wed | ENT | OSPE | | |
| 19th | 13-Aug-24 | Tue | EYE | Grand Test+ Key Discussion+Viva | Lacrimal app, Glaucoma, Squint, Ref Error, Retina | Parson 22nd ed |
| | 14-Aug-24 | Wed | Independence Day- 14th Aug,2024 | | | |
| 20th | 20-Aug-24 | Tue | Sp.Pathology | Grand Test+ Key Discussion+Viva | GT4. MSS, CNS, Skin | Robin's 10th Ed (1171-1239, 1242-1302, 1133-1169) |
| | 21-Aug-24 | Wed | Sp.Pathology | OSPE | MSS, CNS, Skin | Robin's 10th Ed (1171-1239, 1242-1302, 1133-1169) |
| Mid Session Exam: 22nd Aug, 2024- 17th Sep, 2024 | | | | | | |
| 20th | 22-Aug-24 | Thu | ENT | RT | Nose & PNS, Oral Cavity, Salivary Glands, Op Sur Nose | Dhingra Chp 23-46, 84-90 |
| 20th | 23-Aug-24 | Fri | ENT | RT | Ear + Ear Op Sur | Dhingra Chp No. 1-22, 78-83 |
| | | | Early Ward Test | | | |
| 20th | 24-Aug-24 | Sat | DAY OFF | | | |
| 21st | 25-Aug-24 | Sun | DAY OFF | | | |
| 21st | 26-Aug-24 | Mon | ENT | MSE | Entire Syllabus Covered | |
| 21st | 27-Aug-24 | Tue | ENT | OSPE/ Viva | | |
| 21st | 28-Aug-24 | Wed | EYE | RT | Entire Syllabus Covered | |
| 21st | 29-Aug-24 | Thu | EYE | RT | Entire Syllabus Covered | |

| | | | | | | |
|------|-----------|-----|--------------|------------|---|-----------------------------------|
| 21st | 30-Aug-24 | Fri | DAY OFF | | | |
| 21st | 31-Aug-24 | Sat | DAY OFF | | | |
| 22nd | 1-Sep-24 | Sun | DAY OFF | | | |
| 22nd | 2-Sep-24 | Mon | EYE | MSE | Entire Syllabus Covered | |
| 22nd | 3-Sep-24 | Tue | EYE | OSPE/ Viva | | |
| 22nd | 4-Sep-24 | Wed | Com.Medicine | RT | Concept of health & disease. PHC & International Health, NCDs | K.Park Pg13- 63, 365-392, 143-152 |
| 22nd | 5-Sep-24 | Thu | Com.Medicine | RT | Epidemiology, Screening, Demography | K.Park 234rd Ed. Ch3, 4 & 8 |
| 22nd | 6-Sep-24 | Fri | Com.Medicine | RT | Communicable Diseases | CH # 5 |
| 22nd | 7-Sep-24 | Sat | DAY OFF | | | |

| | | | | | | |
|-----------------|-----------|-----|--------------|------------|-------------------------------------|--|
| 23rd | 8-Sep-24 | Sun | DAY OFF | | | |
| 23rd | 9-Sep-24 | Mon | Com.Medicine | MSE | All the syllabus covered uptill now | K.PARK CH 2,3,4,5,6,8, 20, 21, 22 |
| 23rd | 10-Sep-24 | Tue | Com.Medicine | OSPE/ Viva | | |
| 23rd | 11-Sep-24 | Wed | Sp.Pathology | RT | OC, GIT, HBS, Skin | Robin's 10th Ed (731-819, 832-879, 1133-1169) |
| 23rd | 12-Sep-24 | Thu | Sp.Pathology | RT | CVS, Lung, MSS | Robin's 10th Ed (485-582, 673-729, 739-744, 1171-1239) |
| 23rd | 13-Sep-24 | Fri | Sp.Pathology | RT | Hem, Breast, CNS | Robin's 10th Ed (583-672, 1038-1063, 1242-1302) |
| 23rd | 14-Sep-24 | Sat | DAY OFF | | | |
| 24th | 15-Sep-24 | Sun | DAY OFF | | | |
| 24th | 16-Sep-24 | Mon | Sp.Pathology | MSE | Entire Syllabus Covered | Entire Syllabus Covered |
| 24th | 17-Sep-24 | Tue | Sp.Pathology | OSPE/ Viva | | |
| End Of 2nd Term | | | | | | |



Avicenna Medical College

4th Year MBBS (M-20)

3rd Term Test Schedule

| Week | Date | Day | Subject | Test | Topic | Reference |
|------|-----------|-----|-------------------|------------------------------------|--|-------------------------------|
| 24th | 20-Sep-24 | Fri | Mid Ward Test | | | |
| 25th | 24-Sep-24 | Tue | Com.Medicine | Grand Test+ Key Discussion+Viva | MCH, Nutrition, Research & Bio Stats | L.PARK CH9, 10, 18 & NOTE |
| | 25-Sep-24 | Wed | Com.Medicine | OSPE | | |
| | 27-Sep-24 | Fri | Grand Ward Test-4 | | | |
| 26th | 1-Oct-24 | Tue | All Subjects | Lecture | Lecture Time Divided | |
| | 2-Oct-24 | Wed | All Subjects | Lecture | Lecture Time Divided | |
| 27th | 8-Oct-24 | Tue | Com.Medicine | Grand Test+ Key Discussion+Viva | Occupational, Environmnetal & Mental Health, Disaster , Solid & Hospital Waste Management, Health Communication Of Health Education | LAPRK CH 12, 13, 14 15, 17, 1 |
| | 9-Oct-24 | Wed | Com.Medicine | OSPE | | |
| | 11-Oct-24 | Fri | Early Ward Test | | | |

| | | | | | | |
|------|-----------|-----|-------------------|------------------------------------|---|--|
| 28th | 15-Oct-24 | Tue | Sp.Pathology | Grand Test+ Key Discussion+Viva | GT5.Endo, Kidney | Robin's 10th Ed (881-894, 1066-1131, 896-651) |
| | 16-Oct-24 | Wed | Sp.Pathology | OSPE | | |
| | 18-Oct-24 | Fri | Mid Ward Test | | | |
| 29th | 22-Oct-24 | Tue | All Subjects | Lecture | Lecture Time Divided | |
| | 23-Oct-24 | Wed | All Subjects | Lecture | Lecture Time Divided | |
| | 25-Oct-24 | Fri | Grand Ward Test-5 | | | |
| 30th | 29-Oct-24 | Tue | Sp.Pathology | Grand Test+ Key Discussion+Viva | GT6.FGT, LUT, MGS | Robin's 10th Ed (986-1035, 953-982) |
| | 30-Oct-24 | Wed | Sp.Pathology | OSPE | | |
| 31st | 5-Nov-24 | Tue | ENT | Grand Test+ Key Discussion+Viva | Pharynx, Larynx, Trachea, Esophagus, Recent Advances, Neck Masses, & Throat Surgery | Dhingra 7th ED. Chp No. 47-65 + 66-75 + 77 + 91-95 |
| | 6-Nov-24 | Wed | ENT | OSPE | | |
| | 8-Nov-24 | Fri | Early Ward Test | | | |

| | | | | | | |
|---|-----------|-----|-------------------|-------------------------------------|---|----------------|
| 32nd | 12-Nov-24 | Tue | EYE | Grand Test+ Key Discussion+ Viva | Orbit,Neuro ophthalmology,ocular injuries,ocular therapeutics,tumors, instruments | Parson 22nd ed |
| | 13-Nov-24 | Wed | EYE | OSPE | | |
| | 15-Nov-24 | Fri | Mid Ward Test | | | |
| 33rd | 19-Nov-24 | Tue | All Subjects | Lecture | Lecture Time Divided | |
| | 20-Nov-24 | Wed | All Subjects | Lecture | Lecture Time Divided | |
| | 22-Nov-24 | Fri | Grand Ward Test-6 | | | |
| Send-Up Exam: 25th Nov,2024 - 11th Dec,2024 | | | | | | |
| 34th | 25-Nov-24 | Mon | Com.Medicine | Send-Up | Entire Syllabus Covered | |
| 34th | 26-Nov-24 | Tue | DAY OFF | | | |
| 34th | 27-Nov-24 | Wed | DAY OFF | | | |
| 34th | 28-Nov-24 | Thu | EYE | Send-Up | Entire Syllabus Covered | |
| 34th | 29-Nov-24 | Fri | DAY OFF | | | |
| 34th | 30-Nov-24 | Sat | DAY OFF | | | |
| 35th | 1-Dec-24 | Sun | DAY OFF | | | |

| | | | | | |
|-------------|------------------|------------|----------------------------------|----------------|--------------------------------|
| 35th | 2-Dec-24 | Mon | Sp.Pathology | Send-Up | Entire Syllabus Covered |
| 35th | 3-Dec-24 | Tue | DAY OFF | | |
| 35th | 4-Dec-24 | Wed | DAY OFF | | |
| 35th | 5-Dec-24 | Thu | ENT | Send-Up | Entire Syllabus Covered |
| 35th | 6-Dec-24 | Fri | OSPE/ Viva | | |
| 36th | 7-Dec-24 | Sat | DAY OFF | | |
| 37th | 8-Dec-24 | Sun | DAY OFF | | |
| 37th | 9-Dec-24 | Mon | OSPE/ Viva | | |
| 37th | 10-Dec-24 | Tue | OSPE/ Viva | | |
| 37th | 11-Dec-24 | Wed | OSPE/ Viva | | |
| 37th | 12-Dec-24 | Thu | Final Clinical Assessment | | |
| 37th | 13-Dec-24 | Fri | Final Clinical Assessment | | |
| 37th | 14-Dec-24 | Sat | DAY OFF | | |
| 38th | 15-Dec-24 | Sun | DAY OFF | | |

| | | | |
|------------------------|------------------|------------|----------------------------------|
| 38th | 16-Dec-24 | Mon | Final Clinical Assessment |
| 38th | 17-Dec-24 | Tue | Final Clinical Assessment |
| 38th | 18-Dec-24 | Wed | Final Clinical Assessment |
| 38th | 19-Dec-24 | Thu | Final Clinical Assessment |
| End Of 3rd Term | | | |

