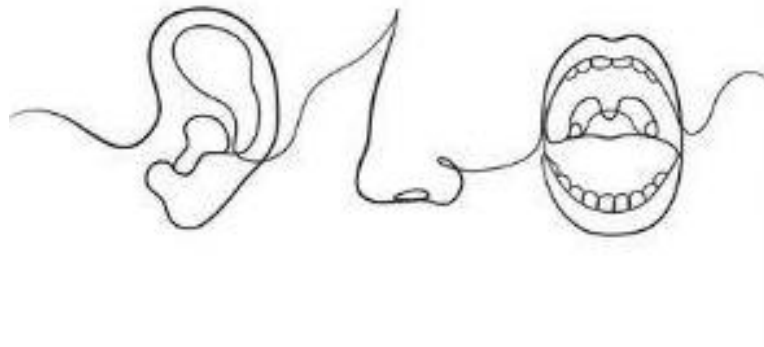




STUDY GUIDE

2024-2025



Program: MBBS
Year: 4th Professional Year
Subject: ENT
Batch No: M-21
Session: 2024-2025

Content

1. Introduction to Study Guide

- Objectives of the Study Guide.....1

2. Avicenna Medical & Dental College Overview

- Institutional Organogram.....2
- Vision and Mission.....2
- Messages:from the Principal.....3
- 7-Star Doctor Competencies (PMDC).....4
- About Medical College.....4

3. Department & Subject Overview

- Note from the Head of Department.....5
- Departmental Organogram.....5
- Faculty Members.....6
- Goal of the Department6
- Course Objectives.....7
- Attendance Requirement & Internal Assessment Criteria.....7

4. Learning Resources & Pedagogy

- Book Recommendations.....8
- Teaching Methodologies.....8
- Infrastructure Resources.....10
- Digital Library & Learning Management System.....12

5. Assessment Guideline

- Internal Assessment.....15
- External Assessment.....17
- Sample Questions.....18

6. Curriculum Details

- Curriculum Framework & Allocation of hours.....21
- Curricular Map & Rationale.....22
- Learning Outcomes & Table of Specifications (TOS).....27
- Academic Calendar / Annual Planner.....
- Block Timetable.....
- Test Schedules.....
- Pre-Clinical / Clinical / Ward Rotations / Community Visits Plan.....
- UHS Syllabus and Statutes.....

Avicenna Medical & Dental College

7. Student's Policy

- Refer to Policy Manual.....

Introduction to Study Guide

Welcome to the Avicenna Medical & Dental College Study Guide!

This guide serves as your essential resource for navigating the complexities of your medical education at Avicenna Medical & Dental College. It integrates comprehensive details on institutional framework, curriculum, assessment methods, policies, and resources, all meticulously aligned with UHS, PMDC and HEC guidelines.

Each subject-specific study guide is crafted through a collaborative effort between the Department of Medical Education and the respective subject departments, ensuring a harmonized and in-depth learning experience tailored to your academic and professional growth.

Objectives of the Study Guide



1. Institutional Understanding:

- Gain insight into the college's organizational structure, vision, mission, and graduation competencies as defined by PMDC, setting the foundation for your educational journey.

2. Effective Utilization:

- Master the use of this guide to enhance your learning, understanding the collaborative role of the Department of Medical Education and your subject departments, in line with PMDC standards.

3. Subject Insight:

- Obtain a comprehensive overview of your courses, including detailed subject outlines, objectives, and departmental structures, to streamline your academic planning.

4. Curriculum Framework:

- Explore the curriculum framework, academic calendar, and schedules for clinical and community rotations, adhering to the structured guidelines of UHS & PMDC.

5. Assessment Preparation:

- Familiarize yourself with the various assessment tools and methods, including internal exam and external exam criteria, and review sample papers to effectively prepare for professional exams.

6. Policies and Compliance:

- Understand the institutional code of conduct, attendance and assessment policies, and other regulations to ensure adherence to college standards and accrediting body requirements.

7. Learning Resources:

- Utilize the learning methodologies, infrastructure resources, and Learning Management System to maximize your educational experience and academic success.

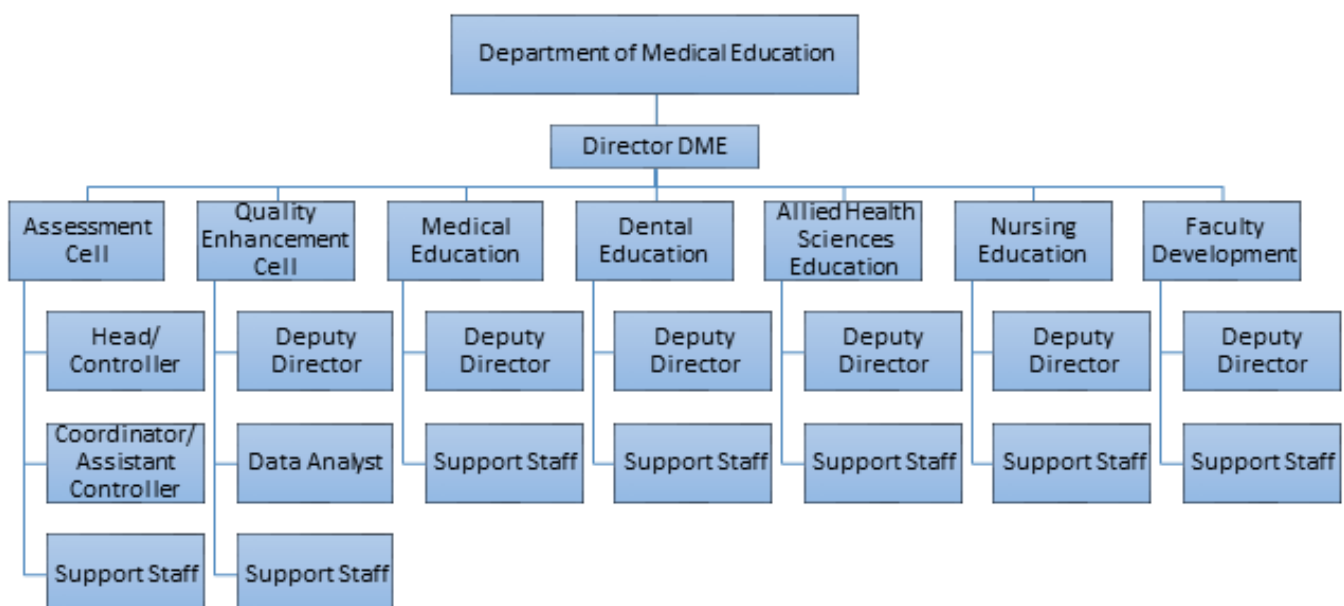
This guide, meticulously developed in collaboration with your subject departments, is designed to support your academic journey and help you achieve excellence in accordance with the highest standards set by PMDC and HEC.

DEPARTMENT OF MEDICAL EDUCATION

The Department of Medical Education (DME) serves as a cornerstone in delivering effective and high-quality education to both undergraduate and postgraduate medical and dental students. The DME is integral to the implementation and adoption of the latest curriculum provided by UHS and is responsible for organizing and managing related academic activities.

The DME will oversee the spirals of PERLs and C-FRC and monitor students' portfolio development and logbook completion. Additionally, the department is developing a mentoring platform and plans to initiate faculty development training which will focus on mentorship, reflective writing, and portfolio development skills. DME has a duty to collaborate with other disciplines to ensure that AVMDC students are not only competent in their respective fields but also well-trained in affective domains such as professionalism, ethics, research, and leadership.

A key responsibility of the DME is to plan and implement an effective training competency acquisition framework in collaboration with the academic council.



General Responsibilities of DME include:

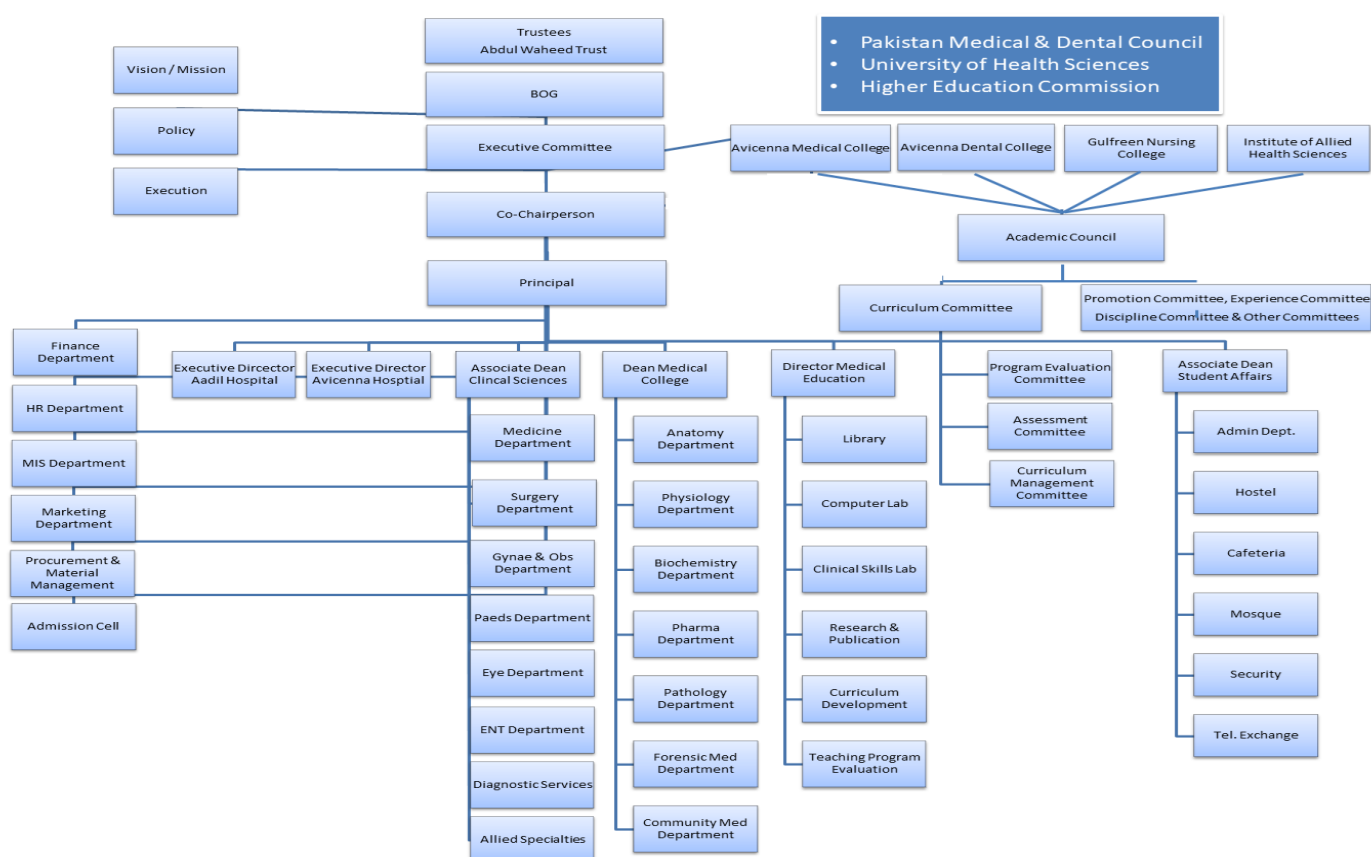
- Contribute and design, train the trainer activities which fulfill the need for undergraduate and postgraduate training.
- Shape and develop medical education research activities of the college.
- Facilitating & organizing workshops, seminars, symposia & conferences.
- Conducting CME activities to leverage culture of awareness, journal club.
- Networking by representing the college, when needed, in national /international meetings or conferences.
- Student counseling.
- Supervising students' academic progress.
- Academic Committees Development and Support.
- Staff Support and Development.
- Curriculum development and reform.
- Collaborate with curriculum committee and faculty members to develop quality instructional material such as modules, lecture, or study guides.

- Standard Operating Procedures for DME development.
- Skill lab management.
- Assessment analysis which includes blue printing, pre-exam review, item analysis and standard setting and provides feedback to concerned faculty and students on the learning outcome achievement.
- Develop and conduct periodical review of process of the program, learning and teaching activities, and assessment process.
- Identify opportunities for use of IT in teaching and learning, assessment and faculty development activities.
- Exam Cell management.
- Quality Assurance Cell management.
- Record keeping of departmental data.
- Leadership and management.
- Participation in overall planning and management of teaching in liaison with the departments.

Faculty	Department
Assistant Director / Assistant Professor Medical Education	Dr. Saman Fatima
Coordinator Medical Education	Dr. Javaid Shabkhaiz Rab
Deputy Director / Demonstrator Dental Education	Dr. Salar Arsalan
Deputy Director / Demonstrator Allied Health Sciences	Dr. Talha
Deputy Director / Demonstrator Nursing Education	Dr. Muneeba

Avicenna Medical & Dental College Overview

Institutional Organogram



Vision & Mission



Avicenna Medical & Dental College



Vision

The vision of **Avicenna Medical & Dental College** is to become a college that thrives to achieve improvement in healthcare of masses through creative delivery of educational programs, innovative research, commitment to public service and community engagement in a environment that supports diversity, inclusion, creative thinking, social accountability, life-long learning and respect for all.

Mission

The mission of **Avicenna Medical and Dental College** is to educate and produce competent, research oriented healthcare professionals with professional commitment and passion for life-long learning from a group of motivated students through quality education, research and service delivery for the

Message from the Chairman



The Avicenna Medical & Dental College is a project of Abdul Waheed Trust which is a Non-profitable, Non-governmental, Non-political & Social organization, working for the welfare of Humanity and based on Community empowerment. Avicenna Medical College has its own 530 bedded Avicenna teaching Hospital (Not for Profit hospital) within the College Campus & 120 bedded Aadil Hospital, at 15 minutes distance. Separate comfortable hostels for boys & girls are provided on the campus.

Our students benefit from the state of the art College Library with facilities of Internet & online Journals that remain open 15 hours a day, for our students & faculty members. I am particularly pleased with the hard work by the Faculty and Students in the achievement of historic 100% results for all the classes. It is a rare achievement and speaks of dedication of the Faculty and Staff. Our motto is Goodness prevails and we aim at producing Doctors' who are knowledgeable, competent in clinical skills and ethical values.

Avicenna Medical College & Hospital was founded to provide quality health care services to the deserving patients belonging to the rural areas near Avicenna Hospital as well as to provide quality medical education of international standard to our students. The Hospital provides all medical services and Lab diagnostics to the local population at minimal cost. So far by the grace of Allah Almighty the number of patients being treated and operated upon at our Hospital is increasing every day as there is no other public or charity hospital in the circumference of 20km. We have already established two Satellite Clinics in the periphery which are providing outdoor care while admission cases are brought to the Hospital in Hospital transport.

Following the success of our reputable Medical College and Hospital, we were able to successfully establish Avicenna Dental College which is recognized by the Pakistan medical & Dental Council & University of Health Sciences. To date, we have enrolled five batches in our dental college and we aim to achieve the same level of success for our dental students as our medical students.

Chairman

Abdul Waheed Sheikh
Avicenna Medical & Dental College

Message from the Principal

Prof. Dr. Gulfreem Waheed
Principal Medical College
MBBS, FCPS, MHPE, PHD Scholar, (HPE)



As a Co-Founder and Co-Chairperson, I have been involved in planning, construction and accreditation of Avicenna Medical College by the Pakistan Medical and Dental Council (PM&DC) and its affiliation with the esteemed University of Health Sciences (UHS). It is a pleasure to see Avicenna Medical College develop, progress and achieve maximum academic excellence in a short period since its inception in 2009. The institution has lived up to its mission of training and producing medical graduates of international standards. Three batches have passed out as Doctors, who currently are serving in the country and abroad while several have opted for post-graduation and are on road to progress. We have achieved several milestones since 2009 including the recognition of our College for FCPS training by College of Physicians and Surgeons of Pakistan (CPSP), establishment of College of Nursing and Avicenna Dental College.

7-Star Doctor Competencies (PMDC)

According to national regulatory authority PMDC, a Pakistani medical/dental graduate who has attained the status of a 'seven-star doctor' is expected to demonstrate a variety of attributes within each competency. These qualities/ generic competencies are considered essential and must be exhibited by the individual professionally and personally.

1. Skillful / Care Provider.
2. Knowledgeable / Decision Maker.
3. Community Health Promoter / Community Leader.
4. Critical Thinker / Communicator
5. Professional / Lifelong learner.
6. Scholar / Researcher
7. Leader/ Role Model / Manager



About Avicenna Medical College

Avicenna Medical & Dental College is a purpose-built, fully equipped institution with experienced and excellence-driven faculty to train high-quality dental professionals in Pakistan.

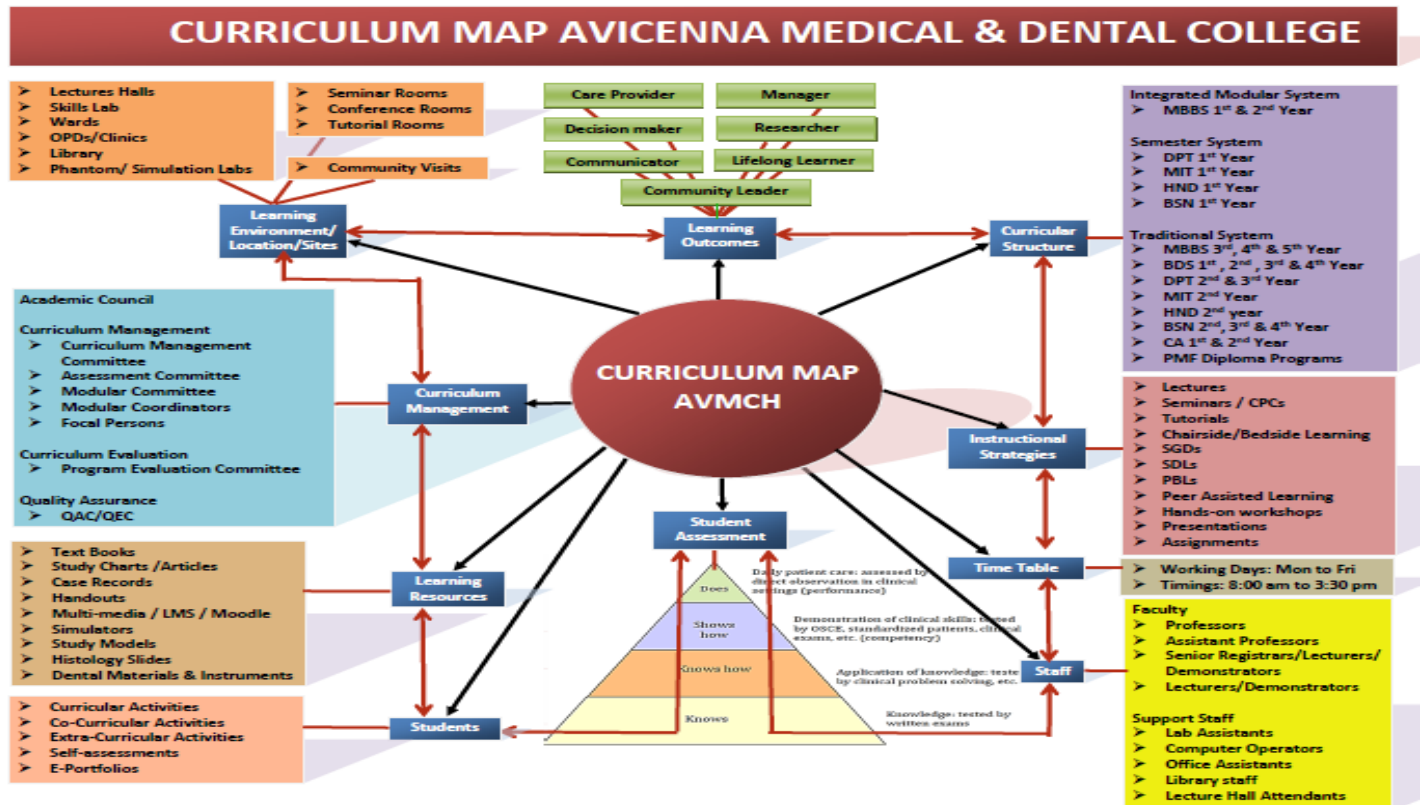
Avicenna Medical & Dental College runs under the umbrella of Abdul Waheed Trust. Abdul Wahid Trust is a non-profit social welfare organization and registered under the Societies Act with the Registrar of Societies. The Trust is legalized through a Trust Deed that bears necessary rectifications. The Trust Deed is further supported by its Memorandum and Article of Association that authorizes the establishment and operation of the Medical College, the Dental College, the Nursing College, the Allied Health Sciences College, and other activities in the healthcare sector.

In 2009, Avicenna Medical & Dental College was recognized by the Pakistan Medical & Dental Council. With the advent of advanced tools and technology in every field of health science, medicine today has shot up to the greater end of the gamut with superior choice and promises in medical therapy in the very vicinity of the common man. AVMDc promises to be one such neighborhood.



Curricular Map

This pictorial, vertical and horizontal presentation of the course content and extent shows the sequence in which various systems are to be covered. Curricular map to cover all the subjects and modules and the time allocated to study of the systems for the undergraduate programs offered at four colleges at campus are as follows:



Department & Subject Overview

Message from the Head of Department

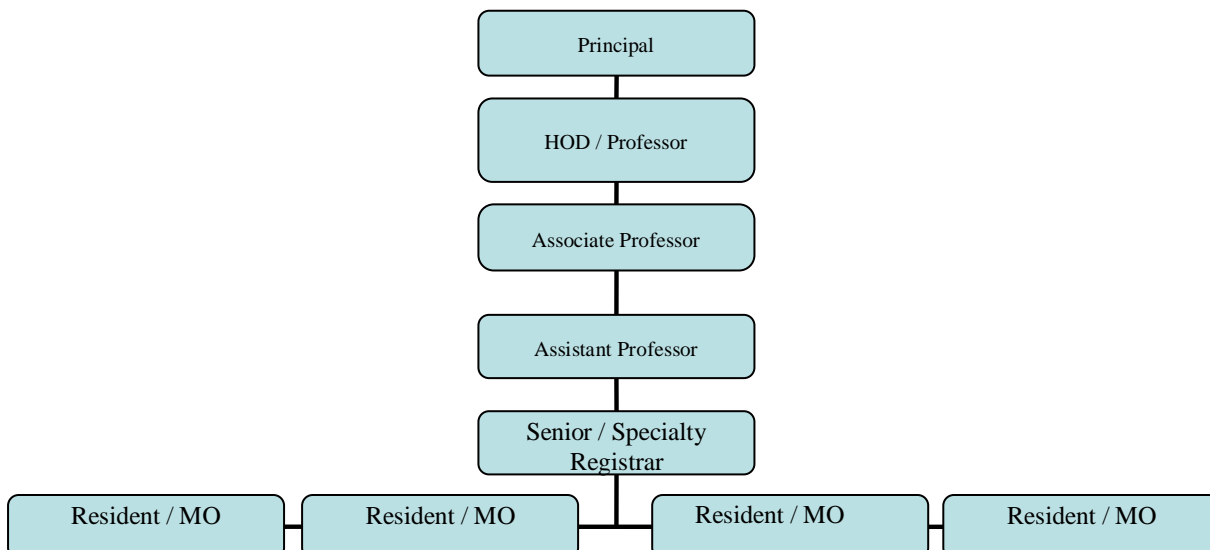
The ENT subject is included in the curriculum of fourth year MBBS according to PMDC regulations. At Avicenna medical college the teaching faculty is well qualified, trained to teach, dedicated and gives personal attention to all the students and continuously produces top results in University of Health Sciences. Our ENT curriculum incorporates well defined learning outcomes to innovative instructional strategies, hands on skills to bedside teaching, round the year exhaustive formative and summative assessments, end of term evaluations leading to planning for next academic year for continuous improvement in the curriculum. All these dimensions contribute to academic excellence in teaching at Avicenna, making it the most sort after academic institution for aspiring youth and their parents.

Prof. Dr. Rizwan Akbar Bajwa

M.B.B.S., F.C.P.S.



Departmental Organogram (as per PMDC guidelines)



Faculty Members

Name	Designation	Qualification
Prof. Dr. Rizwan Akbar Bajwa	Professor & Head of Department	MBBS, FCPS
Prof. Dr. Sami Mumtaz	Professor	MBBS, FRCS
Dr. Usman Aslam Sheikh	Associate Professor	MBBS, FCPS
Dr. Anam Asif	Assistant Professor	MBBS, FCPS
Dr. Behram Afzal	Senior Registrar	MBBS, FCPS
Dr. Amir Akram	Junior Registrar	MBBS

Goal of the Department

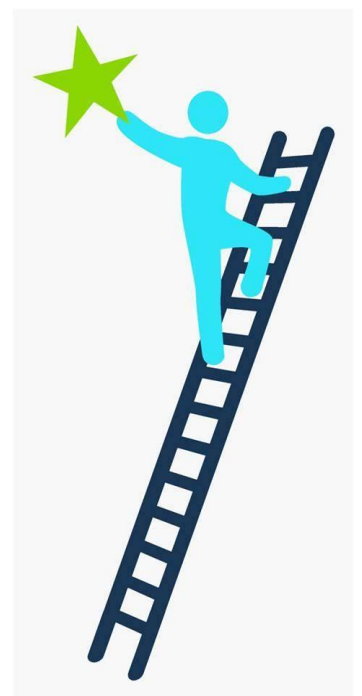
We seek to arouse the curiosity and thirst for knowledge in our students while providing a comfortable, safe, yet disciplined environment for the young minds. We encourage the students to not only ask questions, but also to discuss the problems faced by them at every step of their budding professional life. Each student is groomed on their language skills, presentation techniques, professional etiquette and problem solving capabilities. The overall goal of the imparted training is to ensure that the student should be able to treat minor ENT ailments and should be able to recognize emergent conditions and conditions requiring referral.

Course Objectives

- ☐ **Understand Anatomy and Physiology:** Gain a comprehensive understanding of the anatomy and physiology of the ear, nose, throat, and related structures.
- ☐ **Identify Common Disorders:** Learn to recognize, diagnose, and manage common ENT disorders and conditions, such as sinusitis, otitis media, and laryngitis.
- ☐ **Diagnostic Skills:** Develop skills in conducting and interpreting ENT examinations and diagnostic tests
- ☐ **Treatment and Management:** Acquire knowledge of both medical and surgical treatment options for various ENT conditions.
- ☐ **Patient Communication:** Enhance abilities in communicating effectively with patients, including explaining diagnoses, treatment options, and follow-up care.
- ☐ **Emergency Care:** Understand the principles of managing ENT emergencies, such as foreign body removal and airway management.
- ☐ **Interdisciplinary Approach:** Learn to collaborate with other healthcare professionals for comprehensive patient care.
- ☐ **Evidence-Based Practice:** Apply principles of evidence-based medicine to evaluate and implement current best practices in ENT care.
- ☐ **Ethical and Cultural Competency:** Develop an understanding of ethical considerations and cultural competencies relevant to ENT practice.
- ☐ **Preventive Measures:** Learn about preventive strategies and public health considerations related to ENT conditions.

Attendance Requirement & Internal Assessment Criteria

The institution follows the regulations for examinations of the UHS in letter and spirit. The students require **85% attendance** in all academic sessions and **50% marks** in internal assessments and send-up examinations to be eligible for the UHS Professional Examinations.



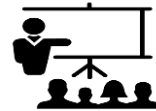
Learning Resources & Pedagogy

Book Recommendations



Sr.	Book Name	Author	Edition
1.	Diseases of Nose, Throat, & Ear	Logan Turner	11 th
2.	Diseases of Ear, Nose, & Throat	P. L. Dhingra	12th
3.	Current Diagnosis & Treatment ENT	Anil K. Lalwani	4th
4.	Oxford Hand Book of ENT	Rogan Corbridge, Nicholas Stevenson	3rd

Traditional & Innovative Teaching Methodologies



Sr.	Pedagogical Methodologies	Description
1.	Lectures	<p>Traditional method where an instructor presents information to a large group of students (large group teaching).</p> <p>This approach focuses on delivering theoretical knowledge and foundational concepts. It is very effective for introducing new topics.</p>
2.	Tutorial	<p>Tutorials involve small group discussion (SGD) where students receive focused instruction and guidance on specific topics.</p>
3.	Demonstrations	<p>Demonstrations are practical displays of techniques or procedures, often used to illustrate complex concepts or practices, particularly useful in dental education for showing clinical skills.</p>
4.	Practicals	<p>Hands-on sessions where students apply theoretical knowledge to real-world tasks. This might include lab work, clinical procedures, or simulations.</p> <p>Practicals are crucial for developing technical skills and understanding the application of concepts in practice.</p>
5.	Student Presentations	<p>Students prepare and deliver presentations on assigned topics. This method enhances communication skills, encourages students to explore topic in-depth. It also provides opportunities for peer feedback and discussion.</p>
6.	Assignment	<p>Tasks given to students to complete outside of class. Assignments can include research papers, case studies, or practical reports. They are designed to reinforce learning, assess understanding, and develop critical thinking and problem-solving skills.</p>

7.	Self-directed Learning	Students take initiative and responsibility for their own learning process. Students are encouraged to seek resources, set goals, and evaluate their progress. This is a learner-centered approach where students take the initiative to plan, execute, and assess their own learning activities. This method promotes independence, critical thinking, and lifelong learning skills.
8.	Flipped Classroom	In this model, students first engage with learning materials at home (e.g., through videos, readings) and then use class time for interactive activities, discussions, or problem-solving exercises. This approach aims to maximize in-class engagement and application of knowledge.
9.	Peer-Assisted Learning (PAL)	A collaborative learning approach where students help each other understand course material. PAL involves structured peer tutoring, study groups, or collaborative tasks. It enhances comprehension through teaching, reinforces learning, and builds teamwork skills.
10.	Team-based Learning (TBL)	A structured form of small group learning where students work in teams on application-based tasks and problems. Teams are responsible for achieving learning objectives through collaborative efforts, promoting accountability, and deeper understanding of the material.
11.	Problem-based Learning (PBL)	Students work on complex, real-world problems without predefined solutions. They research, discuss, and apply knowledge to develop solutions. PBL fosters critical thinking, problem-solving skills, and the ability to integrate knowledge from various disciplines.
12.	Academic Portfolios	<p>A collection of student's work that showcases learning achievements, reflections, and progress over time.</p> <p>Portfolios include assignments, projects, and self-assessments. They provide a comprehensive view of student development, highlight strengths and areas for improvement, and support reflective learning (experiential learning)</p>



Flipped Classroom

Infrastructure Resources

Sr.	Infrastructure Resources	Description
1.	Lecture Hall	Each year has a dedicated lecture hall, totaling five lecture halls for the five professional years. These halls are equipped with modern audiovisual aids to support effective teaching and learning.
2.	Tutorial Room	The college's tutorial rooms, each with a capacity of 30, are specifically designed to support small group discussions and interactive sessions. These rooms facilitate personalized instruction, enabling more engaged and effective learning through direct interaction between students and instructors.
3.	Lab	The college is equipped with state-of-the-art laboratories for practical and clinical work. Each lab is designed to support various disciplines, to facilitate hands-on learning.
4.	Library on campus	A huge library occupies full floor has 260 seats including study carrels and group-discussion tables. Latest reference books, of Basic and Clinical Sciences along with national & international journals are available in the library.
5.	Digital Library	The digital library offers access to a vast collection of e-books, online journals, research databases, and other digital resources. It supports remote access and provides tools for academic research and learning.
6.	Learning Management System (LMS)	The LMS is a comprehensive online platform that supports course management, content delivery, student assessment, and communication. It provides tools for tracking progress, managing assignments, and facilitates ongoing academic activities.
6.	Phantom Labs	Specialized Phantom Labs are available for advanced simulation and practice in dental procedures. These labs provide high-fidelity models and simulators that help students refine their clinical skills in a controlled environment.
7.	Mess & Cafeteria	<p>The College has its own on-campus Mess which caters to 600 students. All food items including dairy, meat, and vegetables are sourced organically and bought in at the time of cooking, in order to ensure that students get freshly cooked meals at all times</p> <p>Students form the Mess committee which decides the mess menu in consultation with other students. The Mess offers fresh food to all residents three times a day. However, day scholars are also welcome to use the Mess facility at a reasonable cost.</p> <p>Two 50- inch LCD screens provide students an opportunity to get entertained during their meal times.</p>
8.	Gymnasium & Sports	We recognize sports as a pivotal key to shape and maintain students' personality and good health. The College has indoor and outdoor sports facilities to help enhance the cognition and capacity to learn. There is a proper sports section for various games like basketball, football, volleyball, and cricket.

		The gym itself is fully equipped with modern machinery both for students and faculty.
9.	IT Lab	The IT Lab is equipped with modern computers and software available for students who need access for academic purposes.
10.	Auditorium	The college has a spacious auditorium equipped with advanced audio-visual facilities. It is used for large-scale lectures, guest presentations, and academic conferences, providing a venue for students to engage with experts and participate in important educational events.
11.	Examination Halls	The college provides dedicated examination halls that are designed to accommodate a large number of students comfortably. These halls are equipped with necessary facilities to ensure a smooth and secure examination process, including proper seating arrangements, monitoring systems, and accessibility features.

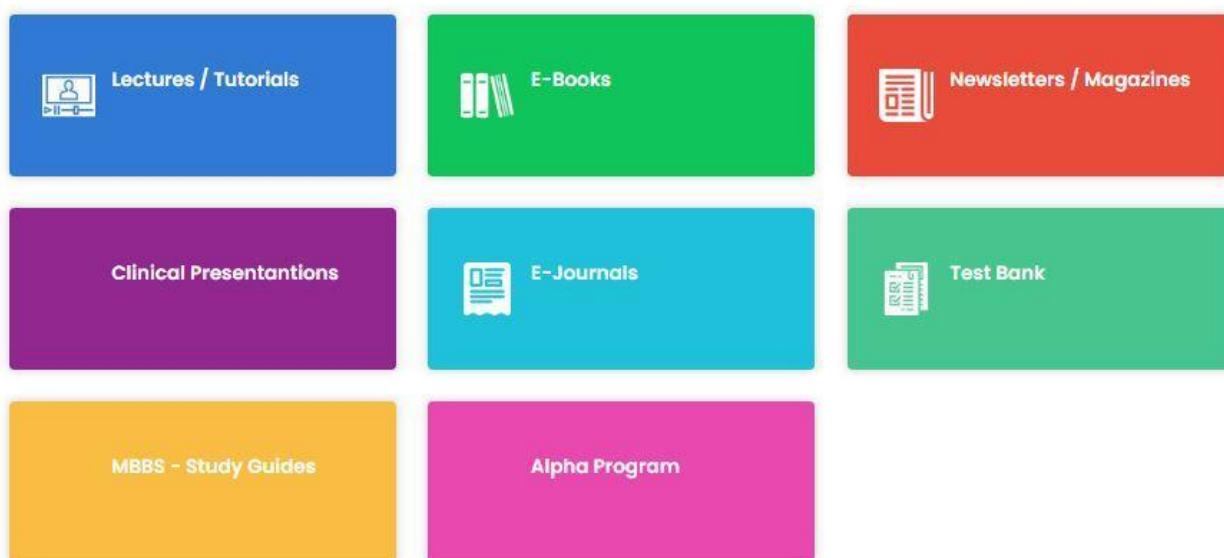




Digital Library & Learning Management System (LMS)

1. The COVID-19 pandemic highlighted the necessity of interactive online teaching for better retention of topics by students. Strategies like online learning management system (LMS), online discussions, online quizzes, assignment design, and flipped learning enhance student engagement in online education when needed.
2. Avicenna Medical & Dental College lays emphasis on the provision of learning material and online video lectures, video tutorials in the e-library and learning resource center, which has a dedicated website of Avicenna Medical College to enable the students to develop concepts and clarify their doubts, if they have not been able to do so in the teaching sessions during college hours. The digital library can be approached on <http://digital.avicennamch.com/>.

Medical



3. The institution has also endeavored to link itself with the digital libraries and e-library of the University of Health Science (UHS) and Higher Education Commission (HEC) to enable the students to benefit from the valuable resource material, lectures and knowledge bank at these sites. The links are available with the HEC <http://www.digitallibrary.edu.pk/> and learning management system of UHS <http://lms.uhs.edu.pk>.
4. The Learning Management System (LMS) at Avicenna Medical & Dental College is a comprehensive platform managed by the Department of Student Affairs. It is designed to facilitate effective communication and information exchange between students, parents, faculty, and administrative staff. The LMS portals are specifically tailored to meet the needs of the following stakeholders:
 - a. **Students:** For academic resources and scheduling.
 - b. **Parents:** For monitoring academic progress and other relevant information.
 - c. **Faculty:** For managing course content and academic activities.
 - d. **Department of Student Affairs:** For overseeing administrative functions.
 - e. **Department of Medical/Dental Education:** For overseeing academic functions.

STUDENT PORTAL

AVICENNA MEDICAL & DENTAL COLLEGE

The Avicenna Medical & Dental College will live up to the name and reputation of "Abu Ali Sina Balkhi (Latin Name Avicenna)" and be a model of excellence for the quality and innovation of its education programs, clinical services and research. The institution will continually strive to exceed the expectations of its patients, students, residents, and local community by constantly improving the services it provides with enthusiasm, teamwork and creativity. In doing so, Avicenna Medical College aligns itself to the vision of its Affiliating University, i.e., University of Health Sciences.

[Visit Website](#)

Student Roll No.
Enter your student id or roll no.

Password
Enter your password

☐ Remember me [Forgot Password?](#)

[Login](#)

Copyright © 2023. All rights reserved.

[f](#) [G+](#) [in](#) [t](#)

5. Students can access a comprehensive range of academic resources and information through the student portal. By logging in with their roll number and password, students can:
 - Look at their attendance and results.
 - Review academic activities and weekly timetables/schedules.
 - Access rotation planners and test schedules.
 - Check for any notification, assignment or resource material from their teachers.
6. The information to the parent is duplicated by the issuance of the password and login to the Students Learning Management System which is dedicated to the Academic Program of the students. The parents can view the following by logging in to the mobile app of Avicenna Student Management System:
 - a) Syllabus
 - b) Table of specifications
 - c) Annual Planner
 - d) Synopsis
 - e) Block Time Table
 - f) Weekly training program
 - g) Allocation of Marks
 - h) Assessment calendar
 - i) Results of tests / exams*
 - j) Students' attendance record
 - k) Fees & fines

Assessment in medical & dental education is a critical component designed to ensure that medical & dental students acquire the necessary knowledge, skills, and competencies required for effective medical & dental practice.

Assessment drives learning! – George E. Millar

You will encounter a variety of assessment methods, each serving a specific purpose.

- Written examinations, including multiple-choice and essay questions, will test your grasp of theoretical concepts and subject matter.
- Practical assessments will require you to demonstrate your clinical skills and ability to apply knowledge in real-world scenarios.
- Clinical exams will evaluate your communication skills and reasoning abilities through case discussions and problem-solving exercises.
- Clinical skills and work-place based assessments will observe your hands-on proficiency and patient management capabilities.

At Avicenna Medical & Dental College, internal assessments are systematically conducted throughout each academic year of the MBBS program, as per the guidelines established by the University of Health Sciences (UHS). These assessments, overseen by the Assessment Cell, adhere to either the Annual Subject-Based System or the Integrated/Modular System, depending on the curriculum structure.

Notably, beginning with the 2024-25 academic year, the weightage of internal assessments will be increased from 10% to 20%. The UHS administers professional examinations independently, organizing them at designated neutral sites and appointing external examiners to ensure objectivity and fairness.

Internal Assessment Weightage	10%	100 %
External Assessment Weightage	90%	



Internal Assessment

How is Internal Assessment Calculated for your department?

Internal Assessment		Assessment Methods (MCQ/SEQ/OSCE/Viva/ Practical)	Percentage Weightage (write N/A where not applicable)
Session Exams	Early Session Exam	MCQs SEQs Viva OSPE	70%
	Mid-term Session Exam	MCQs SEQs Viva OSPE	
	Late Session/Send up Exam	MCQs SEQs Viva OSPE	
Grand Tests		MCQs SEQs Viva OSPE	30%
Batch Clinical Assessment			N/A
Final Clinical Assessment		MCQs SEQs Viva OSPE	100%
Ward Test	Early Ward Test	Viva OSPE	20%
	Mid Ward Test	Viva OSPE	30%
	Grand Ward Test	MCQs SEQs Viva OSPE	50%
Attendance & Behaviour			
			100%

1st Year MBBS Integrated Marking Scheme - 2023-24

BLOCK 1

Form No.	MBBS-Form 1			MBBS-Form 2			
Mode Of Exam	Theory			Practical			
Weightage	35%			35%			
Subject	MCQs (1 marks)	SEQs (5 marks)	Marks	OSPE (8 marks) each observed station	OSCE (8 marks) each observed station	OSVE (16 marks) each observed station	Marks
Anatomy	20	3 x 5 = 15	35	3 x 8 = 24	-	1 x 16 = 16	40
Physiology	22	2 x 5 = 10	32	2 x 8 = 16	-	1 x 16 = 16	32
Biochemistry	22	2 x 5 = 10	32	2 x 8 = 16	-	1 x 16 = 16	32
Pathology	6	-	6	-	-	-	-
Community Medicine	5	-	5	-	-	-	-
Behavioural Sciences	5	-	5	-	-	-	-
Pharmacology	5	-	5	-	-	-	-
CFRC	-	-	-	-	1 x 8 = 8	-	8
PERLs	-	-	-	-	1 x 8 = 8	-	8
Total	85	7 x 5 = 35	120	7 x 8 = 56	2 x 8 = 16	3 x 16 = 48	120

External Assessment

What to expect in External Exam?

External Assessment	Assessment Methods	Marks	Percentage Weightage
Theory <ul style="list-style-type: none"> • Total marks • Time 	45 MCQs 9 SEQs	45 45	45 %
Practical <ul style="list-style-type: none"> • Total marks • Time 	Viva OSCE	45 45	45 %
Internal Assessment		20	10 %
Total marks		200 Marks	100%

Sample Paper

MCQ

AUTHOR: Dr. Rizwan A. Bajwa
DATE: 08/01/2024
DISCIPLINE/SUBJECT: ENT
TOPIC: Oroantral Fistula
LEVEL OF STUDENT: 4th Year MBBS
AREA: Diagnosis

Item Writing Template

Stem: A 25 years old girl, who had her right 2nd upper premolar extracted about a week ago, now complains of headache with pain in upper jaw & swelling & tenderness of cheek. On examination there is mucopus in the middle meatus.

Lead in: What is the most likely diagnosis

Option:

a) Acute maxillary sinusitis
b) Cheek Abscess
c) Ludwigs angina
d) Oroantral fistula*

COGNITIVE LEVEL: Application
DIFFICULTY LEVEL: Moderate
IMPORTANCE: Must Know
REFERENCE: P. L. Dhingra 7th Ed., Page No. 208

SEQ/SAQ

AUTHOR: Dr. Rizwan A. Bajwa
DATE: 08/01/2024
DISCIPLINE/SUBJECT: ENT
TOPIC: Septal Abscess
LEVEL OF STUDENT: 4th Year MBBS
AREA: diagnosis & management

Scenario

A 25 year old male with history of nasal trauma 5 days back, complains of nasal blockage, fever and painful swelling of nose. On examination, there is swelling of either side of nasal septum.

Questions	Marks
a) What is the most likely diagnosis	1
b) How will you manage this patient	4

Key	Marks
a) Septal Abscess	1
b) 1. Admit patient 2. Incision and drainage of Septal abscess 3. Suction is done to remove pus and necrosed pieces of cartilage. 4. Bilateral Nasal packing 5. Systemic Antibiotics like penicillins for a period of 10 days.	4

COGNITIVE LEVEL: Application
DIFFICULTY LEVEL: Moderate
IMPORTANCE: Must Know
REFERENCE: P. L. Dhingra 7th Ed., Page No. 168

OSCE COVER SHEET

Station Title: Hearing Assessment

Type of Station: Observed

Discipline / Specialty: ENT

Marks: 04

Class Level: 4th Year MBBS

Time: 05 min

Estimated difficulty: Medium

Exam: Early Session

Taxonomy level: Understanding & Application

List of resources required: 2 chairs, 1 table / desk, Tuning Fork

Instructions for the Candidate: Your task is to read the provided scenario below thoroughly and then provide answers to the questions listed for the examiner.

Scenario : A 25 years old male has presented with hearing loss. Perform tuning fork tests and interpret its result.

Key:

- | | |
|------------------------------------|----|
| 1. Introduction, Consent, Exposure | 01 |
| 2. Rinnie's Test | 01 |
| 3. Weber's Test | 01 |
| 4. Interpretation | 01 |

CURRICULUM DETAILS

Curricular Framework including Allocation of Hours (PMDC)

Basic & Clinical Medical Sciences / Preclinical & Para Clinical Years			
1 st & 2 nd Professional Year	3 rd Professional Year	4 th Professional Year	5 th Professional Year
Anatomy 500 Hours	General & Special Pathology 500 Hours	Eye 150 Hours	General Surgery 600 Hours
Physiology 450 Hours	Pharmacology 300 Hours	ENT 150 Hours	General Medicine 600 Hours
Biochemistry 250 Hours	Forensic Medicine & Toxicology 100 Hours	General & Special Pathology 500 Hours	Paediatrics 300 Hours
General Education 450 Hours <ul style="list-style-type: none"> • Quran Kareem – 50 Hours • Pakistan Studies / Ideology & Pakistan Constitution – 25 Hours • Islamiyat / Ethics – 25 Hours • Professionalism – 25 Hours • Communication Skills -25 Hours • English Expository Writing – 25 Hours 	Psychiatry & Beh. Sciences 150 Hours	Community Medicine & Public Health 200 Hours	OBS & Gynae 300 Hours
	Pre-clinical Operative Dentistry 80 Hours	Research Methodology & Evidence Based Medicine 100 Hours	Surgical specialties 225 Hours <ul style="list-style-type: none"> • Neurosurgery • Vascular surgery • Adult Cardiac surgery • Paediatrics surgery • Thoracic surgery • Plastic surgery

<ul style="list-style-type: none"> • Arts & Humanities (One Course) -25 Hours • Co-curricular activities – 200 Hours 			
			<p>Medical specialties 225 Hours</p> <ul style="list-style-type: none"> • Neurology • Rheumatology • Geriatrics • Endocrinology • Paediatrics Cardiology • Infectious Diseases • Oncology

Academic Planner



Avicenna Medical & Dental College

Calendar 2023-2024

4th Year MBBS

	January 2024								February 2024								March 2024							SESSION START: 28th Feb, 2024	
	Su	Mo	Tu	We	Th	Fr	Sa		Su	Mo	Tu	We	Th	Fr	Sa		Su	Mo	Tu	We	Th	Fr	Sa		Casualty Holidays
		1	2	10	4	5	6						1	2	3	1						1	2		i- Kashmir Holiday - 5th Feb, 2024
	7	8	9		11	12	13		4	15	6	7	8	9	10	2	3	4	5	6	7 EWT	8	9		ii- Pakistan Day - 23rd March, 2024
	14	15	16	17	18	19	20		11	12	13	14	15	16	17	3	10	11	12	13	14	15	16		iii- Eid - Ul - Fitr - 8th April - 14th April, 2024
	21	22	23	24	25	26	27		18	19	20	21	22	23	24	4	17	18	19	20	21	22 MWT	23		iv- Labor Holiday - 1st May, 2024
	28	29	30	31			1		25	26	27	28	29			5	24	25	26 CM	27	28	29 GW TL	30		v- Youm - e- Takbeer Holiday - 28th May, 2024
																6	31								vi- Eid - Ul - Adha - 17th June - 19th June, 2024
	April 2024								May 2024								June 2024							vii- Ashura - 16 & 17 July, 2024	
	Su	Mo	Tu	We	Th	Fr	Sa		Su	Mo	Tu	We	Th	Fr	Sa		Su	Mo	Tu	We	Th	Fr	Sa		viii- Independence Day - 14th Aug, 2024
6		1	2 SP	3	4	5	6	9				1st	2	3 MWT	4	13 ESE							1 Eye		ix- Rab ul Awwal - 15th Sep, 2024
Eid-ul-Fitr	7	1st	2nd	3rd	4th	5th	6th	10	5	6	7 SP	8	9	10 GW TL	11	14	2	3	4	5 EWT	6	7	8		x- Ghaat-e-Azam Day/Christmas - 25th Dec, 2024
7	14	15	16	17	18 SP	19 EWT	20	11	12	13	14 CM	15	16 ESE	17	18	15	9	10	11 SP	12	13	14	15		Vacations
8	21	22	23 Eye	24	25	26	27	12 ESE	19	20 CM	21 CM	22	23	24 ESE	25	Eid-ul-Adha+Su.V	16	1st	2nd	3rd	4th	5th	6th	7th	Spring Vacations - 7th April, 2024 - 14th April, 2024
9	28	29	30					13 ESE	26	27 SP	28	29 SP	30	31 Eye		Su.V	23	24	25	26	27	28	29		Summer Vacations - 15th June - 22nd July, 2024
																Su.V	30								Winter Vacations - 22nd Dec - 29th Dec, 2024
	July 2024								August 2024								September 2024							Events	
	Su	Mo	Tu	We	Th	Fr	Sa		Su	Mo	Tu	We	Th	Fr	Sa		Su	Mo	Tu	We	Th	Fr	Sa		White Coat Ceremony - 17 April, 2024
Su.V		1	2	3	4	5	6	17					1	2 GW TL	3	22 MSE	1	2 Eye	3 Eye	4 CM	5 CM	6 CM	7		Sports Day - 6 March, 2024
Su.V	7	8	9	10	11	12	13	18	4	5	6 ESE	7	8	9	10	23 MSE	8	9 CM	10 CM	11 SP	12 SP	13 SP	14		Fun fair - 20th April, 2024
Su.V	14	15	16	17	18	19	20	19	11	12	13 Eye	14	15	16	17	24 MSE	15	16 SP	17 SP	18	19	20 MWT	21		Trips and Tours
16	21	22	23	24	25	26 MWT	27	20 MSE	18	19	20 SP	21	22 ESE	23 EWT	24	25	22	23	24 CM	25	26	27 GW TL	28		
17	28	29	30 CM	31				21 MSE	25	26 ESE	27 Eye	28 Eye	29 Eye	30	31	26	29	30							Session Exam
	October 2024								November 2024								December 2024							Early Session - 20th May, 2024 - 1st June, 2024	
	Su	Mo	Tu	We	Th	Fr	Sa		Su	Mo	Tu	We	Th	Fr	Sa		Su	Mo	Tu	We	Th	Fr	Sa		Mid Session - 2nd Aug, 2024 - 17th Sep, 2024
26			1	2	3	4	5	30						1	2	35 LSE/Send Up	1	2 SP	3	4	5 ESE	6	7		Late Session - 25th Nov, 2024 - 11th Dec, 2024
27	6	7	8 CM	9	10	11 EWT	12	31	3	4	5 ESE	6	7	8 EWT	9	36 CR	8	9	10	11	12	13	14		
28	13	14	15 SP	16	17	18 MWT	19	32	10	11	12 Eye	13	14	15 MWT	16	CR	15	16	17	18	19	20	21		
29	20	21	22	23	24	25 GW TL	26	33	17	18	19	20	21	22 GW TL	23	Winter Vaca.	22	23	24	25	26	27	28		
30	27	28	29 SP	30	31			34 LSE/Send Up	24	25 CM	26	27	28 Eye	29	30		29	30	31						

Allocation of Hours

ALLOCAION OF CURRICULUM HOURS

4th YEAR MBBS

Subject Title	C.Rotation	Practical	Lecture	SDL	Field Visit	Assessment	CST	Evening clinical Rotation	Total Hours (33 Weeks)	Interactive Session (6 Weeks)	AVMC	PMDC
Community Medicine + Research		23	145	16.5	35	49.5			269	42	311	270
Special Pathology		33	132	49.5		49.5			264	48	312	250
Eye	33	33	66			49.5			181.5	33	214.5	150
ENT	33	33	66			49.5			181.5	33	214.5	150
Medicine	33			33			16.5	165	247.5	12	259.5	
Surgery	33			33			16.5	165	247.5	12	259.5	
Paeds	33								33	6	39	
Gynae	33								33	6	39	
Islamiyat												
Spare												
Total	198	122	409	132	35	198	33	330	1457	192	1649	820

Table of Specification

Unit/ Chapter	Topic/ Content	Student Learning Objectives	Mode of Information (MOIT)	Learning Domain (KSA-Model)	Assessment Method (No. of Questions)			
					MCQS	SEQs	Viva	OSCE/OSPE or Practical
EAR	Anatomy + physiology of ear	By the end of this topic, students will be able to: <ul style="list-style-type: none"> To understand the applied aspect of anatomy and physiology 	Lecture Tutorial Clinical Rotation	Knowledge (Cognitive C1) Skill (Psychomotor P1) Attitude (Effective A1)	1	X	✓	✓
	External ear canal	<ul style="list-style-type: none"> To differentiate disease of external ear To know the treatment 	Lecture Tutorial Clinical Rotation	C3 P3 A3	3	1	✓	✓
	Diseases of middle ear	<ul style="list-style-type: none"> To understand different middle ear diseases(ASOM, CSOM, Otosclerosis, their presentations, investigation and treatment options 	Lecture Tutorial Clinical Rotation	C3 P3 A3	8	1	✓	✓
	Diseases of inner ear	<ul style="list-style-type: none"> To understand different inner ear diseases (meniere's disease, vertigo) their presentations, investigation and treatment options 	Lecture Tutorial Clinical Rotation	C3 P2 A2	1	X	✓	✓
	Deafness	<ul style="list-style-type: none"> To understand the assessment of hearing and causes of deafness 	Lecture Tutorial Clinical Rotation	C3 P2 A3	1	1	✓	✓

		<ul style="list-style-type: none"> Understanding which investigations to be advised at particular age group To identify importance of Hearing Aid and Cochlear Implant 						
	Tumors of ear	<ul style="list-style-type: none"> To understand different tumors of ear (Glomus tumor / Acoustic Neuroma) and there treatment options 	Lecture Tutorial Clinical Rotation	C3 P2 A2	1	X	✓	✓
NOSE	Anatomy and physiology of nose & paranasal sinuses	To understand the applied aspect of anatomy and physiology	Lecture Tutorial Clinical Rotation	C1 P1 A1	1	X	✓	✓
	Nasal septum and its diseases	<ul style="list-style-type: none"> To identify nasal septal disease, there clinical features and treatment 	Lecture Tutorial Clinical Rotation	C3 P2 A3	3	1	✓	✓
	Epistaxis	<ul style="list-style-type: none"> To know causes, investigations and treatment options 	Lecture Tutorial Clinical Rotation	C3 P2 A3	2	1	✓	✓
	Nasal polyp	<ul style="list-style-type: none"> To differentiate Ethmoidal polyps from A/C polyp There investigations and treatment 	Lecture Tutorial Clinical Rotation	C3 P2 A2	2	X	✓	✓
	Rhinitis	<ul style="list-style-type: none"> To differentiate acute from chronic rhinitis Causes of rhinitis, treatment options 	Lecture Tutorial Clinical Rotation	C3 P2 A3	1	X	✓	✓
	CSF Rhinorrhea	<ul style="list-style-type: none"> To know causes investigation and treatment options 	Lecture Tutorial Clinical Rotation	C3 P2 A2	1	X	✓	✓

	Diseases of sinuses	<ul style="list-style-type: none"> To differentiate acute from chronic sinusitis, there investigations and treatment option To understand different complications of sinusitis 	Lecture Tutorial Clinical Rotation	C3 P2 A2	1	X	✓	✓
	Granulomatus disease	<ul style="list-style-type: none"> To differentiate granulomatus diseases and there treatment options 	Lecture Tutorial Clinical Rotation	C3 P2 A2	1	X	✓	✓
	Tumors of Nose + PNS	<ul style="list-style-type: none"> To identify different sinonasal tumors there investigations, treatment options 	Lecture Tutorial Clinical Rotation	C3 P2 A2	1	X	✓	✓
Throat	Disease of oral cavity	<ul style="list-style-type: none"> To know causes investigation and treatment options 	Lecture Tutorial Clinical Rotation	C3 P2 A2	1	X	✓	✓
	Disease of salivary glands	<ul style="list-style-type: none"> To know causes investigation and treatment options 	Lecture Tutorial Clinical Rotation	C2 P2 A2	1	X	✓	✓
	Tumors of oral cavity and salivary glands	<ul style="list-style-type: none"> To know causes investigation, clinical features and treatment options 	Lecture Tutorial Clinical Rotation	C3 P2 A2	2	X	✓	✓
	Oropharynx	<ul style="list-style-type: none"> To know different disease of oropharynx, causes investigation, clinical features and treatment options 	Lecture Tutorial Clinical Rotation	C2 P2 A2	1	1	✓	✓
	Head and Neck space infection	<ul style="list-style-type: none"> To know causes investigation and treatment options To understand the complications 	Lecture Tutorial Clinical Rotation	C2 P2 A2	1	X	✓	✓

	Tumors of pharynx	<ul style="list-style-type: none"> To know causes investigation, clinical features and treatment options 	Lecture Tutorial Clinical Rotation	C2 P2 A2	1	X	✓	✓
	Anatomy + physiology of larynx	<ul style="list-style-type: none"> To understand the applied aspect of anatomy and physiology 	Lecture Tutorial Clinical Rotation	C1 P1 A1	1	X	✓	✓
	Stridor	<ul style="list-style-type: none"> Definition of stridor, its causes To know different methods of establishing airway 	Lecture Tutorial Clinical Rotation	C3 P2 A2	1	1	✓	✓
	Larynx / infection	<ul style="list-style-type: none"> To identify laryngitis, Acute Epiglottitis, LTB To understand treatment 	Lecture Tutorial Clinical Rotation	C3 P2 A2	3	1	✓	✓
	Tracheostomy	<ul style="list-style-type: none"> Definition of Tracheostomy and its types To understand its complications 	Lecture Tutorial Clinical Rotation	C1 P1 A1	1	1	✓	✓
	Tumors of larynx	<ul style="list-style-type: none"> To understand its clinical presentation Investigation and staging of tumors Treatment options Voice rehabilitation 	Lecture Tutorial Clinical Rotation	C3 P2 A2	2	X	✓	✓
	FB Bronchus	<ul style="list-style-type: none"> To know how to investigate patient and its treatment 	Lecture Tutorial Clinical Rotation	C3 P2 A2	1	X	✓	✓
	Disease of esophagus	<ul style="list-style-type: none"> To understand different diseases of esophagus To elaborate causes of dysphagia 	Lecture Tutorial Clinical Rotation	C2 P2 A2	1	X	✓	✓

Total	45	9		
-------	----	---	--	--

Clerkships



Avicenna Medical College

Final Year MBBS M-19

Ward Test Schedule

CLINICAL ROTATION DURATION	CLINICAL ROTATION-1 1-April-24 to 11-May-24		GRAND WARD TEST-1	CLINICAL ROTATION-2 14-May-24 to 11-June-24		GRAND WARD TEST-2	CLINICAL ROTATION-3 22-July-24 to 7-Sep-24		GRAND WARD TEST-3	CLINICAL ROTATION-4 10-Sep-24 to 12-Oct-24		GRAND WARD TEST-4	CLINICAL ROTATION-5 15-Oct-24 to 7-Dec-24		GRAND WARD TEST-5	CLINICAL ROTATION-6 10-Dec-24 to 18-Jan-25		GRAND WARD TEST-6
	Early Ward Test	Mid Ward Test		Early Ward Test	Mid Ward Test		Early Ward Test	Mid Ward Test		Early Ward Test	Mid Ward Test		Early Ward Test	Mid Ward Test		Early Ward Test	Mid Ward Test	
	TEST DATE:																	
	19-Apr-24	3-May-24	13-May-2024	24-May-24	7-June-24	12-June-2024	16-Aug-24	30-Aug-24	9-Sep-2024	20-Sep-24	4-Oct-24	14-Oct-2024	15-Nov-24	29-Nov-24	9-Dec-2024	20-Dec-24	10-Jan-25	20-Jan-2025
BATCH: A	M-I	M-I	GRAND WARD TEST MEDICINE-I	M-II	M-II	GRAND WARD TEST MEDICINE-II	OBG.GYNAE	OBG.GYN AE	GRAND WARD TEST OBG.GYNAE	S-I	S-I	GRAND WARD TEST SURGERY-I	S-II	S-II	GRAND WARD TEST SURGERY-II	PAEDS	PAEDS	GRAND WARD TEST PAEDS
BATCH: B	M-II	M-II	GRAND WARD TEST MEDICINE-II	OBG.GYNAE	OBG.GYN AE	GRAND WARD TEST OBG.GYNAE	S-I	S-I	GRAND WARD TEST SURGERY-I	S-II	S-II	GRAND WARD TEST SURGERY-II	PAEDS	PAEDS	GRAND WARD TEST PAEDS	M-I	M-I	GRAND WARD TEST MEDICINE-I
BATCH: C	OBG.GYNAE	OBG.GYN AE	GRAND WARD TEST OBG.GYNAE	S-I	S-I	GRAND WARD TEST SURGERY-I	S-II	S-II	GRAND WARD TEST SURGERY-II	PAEDS	PAEDS	GRAND WARD TEST PAEDS	M-I	M-I	GRAND WARD TEST MEDICINE-I	M-II	M-II	GRAND WARD TEST MEDICINE-II
BATCH: D	S-I	S-I	GRAND WARD TEST SURGERY-I	S-II	S-II	GRAND WARD TEST SURGERY-II	PAEDS	PAEDS	GRAND WARD TEST PAEDS	M-I	M-I	GRAND WARD TEST MEDICINE-I	M-II	M-II	GRAND WARD TEST MEDICINE-II	OBG.GYNAE	OBG.GYNAE	GRAND WARD TEST OBG.GYNAE
BATCH: E	S-II	S-II	GRAND WARD TEST SURGERY-II	PAEDS	PAEDS	GRAND WARD TEST PAEDS	M-I	M-I	GRAND WARD TEST MEDICINE-I	M-II	M-II	GRAND WARD TEST MEDICINE-II	OBG.GYN AE	OBG.GYNAE	GRAND WARD TEST OBG.GYNAE	S-I	S-I	GRAND WARD TEST SURGERY-I
BATCH: F	PAEDS	PAEDS	GRAND WARD TEST PAEDS	M-I	M-I	GRAND WARD TEST MEDICINE-I	M-II	M-II	GRAND WARD TEST MEDICINE-II	OBG.GYNAE	OBG.GYN AE	GRAND WARD TEST OBG.GYNAE	S-I	S-I	GRAND WARD TEST SURGERY-I	S-II	S-II	GRAND WARD TEST SURGERY-II

Prepared by DME

Principal Prof.Dr.Gulfreeen Waheed

Assessment Schedule



Avicenna Medical College

4th Year MBBS (M-20)

1st Term Test Schedule

Week	Date	Day	Subject	Test	Topic	Reference
1st	28-Feb-24	Wed	SESSION START			
2nd	5-Mar-24	Tue	All Subjects	Lecture	Lecture Time Divided	
	7-Mar-24	Thus	Early Ward Test			
3rd	12-Mar-24	Tue	All Subjects	Lecture	Lecture Time Divided	
4th	19-Mar-24	Tue	All Subjects	Lecture	Lecture Time Divided	
	22-Mar-24	Fri	Mid Ward Test			
5th	26-Mar-24	Tue	Com.Medicine	Grand Test+ Key Discussion+Viva	Concept of health & disease. PHC & International Health, NCDs	K.Park Pg13- 63, 365- 392, 143-152
	27-Mar-24	Wed	Com.Medicine	OSPE		
		29-Mar-24	Fri	Grand Ward Test-1		

6th	2-Apr-24	Tue	Sp.Pathology	Grand Test+ Key Discussion+Viva	GT.1 - GIT, HBS	Robin's 10th Ed (731-819, 832-879)
	3-Apr-24	Wed	Sp.Pathology	OSPE		
Eid- Ul- Fitr Holidays:7th April-14th April,2024						
7th	16-Apr-24	Tue	All Subjects	Lecture	Lecture Time Divided	
	18-Apr-24	Thus	Sp.Pathology	Repeat Grand Test	GT.1 - GIT, HBS	Robin's 10th Ed (731-819, 832-879)
	19-Apr-24	Fri	Early Ward Test			
8th	23-Apr-24	Tue	EYE	Grand Test+ Key Discussion+Viva	Lid, cconjunctiva , Lens & Uveitis	Parson 22nd ed
	24-Apr-24	Wed	EYE	OSPE		
9th	30-Apr-24	Tue	DAY OFF			
	1-May-24	Wed	DAY OFF			
	3-May-24	Fri	Mid Ward Test			

10th	7-May-24	Tue	Sp.Pathology	Grand Test+ Key Discussion+Viva	GT.2 - CVS, Lung	Robin's 10th Ed (485-582, 673-729, 739-744)
	8-May-24	Wed	Sp.Pathology	OSPE		
	10-May-24	Fri	Grand Ward Test-2			
11th	14-May-24	Tue	Com.Medicine	Grand Test+ Key Discussion+Viva	Epidemiology, Screening, Demography	K.Park 234rd Ed. Ch3, 4 & 8
	15-May-24	Wed	Com.Medicine	OSPE		
	16-May-24	Thu	ENT	Grand Test+ Key Discussion+Viva	Nose & PNS, Oral Cavity, Salivary Glands, Op Sur Nose	Dhingra Chp 23-46, 84-90
	17-May-24	Fri	ENT	OSPE		
Early Session Exam: 20th May,2024- 31st May,2024						
12th	20-May-24	Mon	Com.Medicine	ESE	Concept of HD, International H, Primary Health care, NCDs, EPIDEMIOLOGY, Screening, Demography	K. park CH # 2, 3, 4, 6, 8, 21 & 22
12th	21-May-24	Tue	Com.Medicine	OSPE/ Viva		
12th	22-May-24	Wed	DAY OFF			
12th	23-May-24	Thu	DAY OFF			

12th	24-May-24	Fri	ENT	ESE/ OSPE/ Viva	Nose & PNS, Oral Cavity, Salivary Glands, Op Sur Nose	Dhingra Chp 23-46, 84- 90
12th	25-May-24	Sat	DAY OFF			
13th	26-May-24	Sun	DAY OFF			
13th	27-May-24	Mon	Sp.Pathology	ESE	Entire Syllabus Covered	Entire Syllabus Covered
13th	28-May-24	Tue	28th May,2024 : Youm-e-Takbeer Holiday			
13th	29-May-24	Wed	Sp.Pathology	OSPE/ Viva	Entire Syllabus Covered	Entire Syllabus Covered
13th	30-May-24	Thu	OFF			
13th	31-May-24	Fri	EYE	OSPE/ Viva	Entire Syllabus Covered	
13th	1-Jun-24	Sat	EYE	ESE		
End Of 1st Term						



Avicenna Medical College

4thYear MBBS (M-20)

2nd Term Test Schedule

Week	Date	Day	Subject	Test	Topic	Reference
14th	4-Jun-24	Tue	All Subjects	Lecture	Lecture Time Divided	
	5-Jun-24	Wed	Early Ward Test			
15th	11-Jun-24	Tue	Sp.Pathology	Grand Test+ Key Discussion+Viva	GT3 Hem, Breast	Robin's 10th Ed (583-672, 1038-1063)
	12-Jun-24	Wed	Sp.Pathology	OSPE		
Eid- Ul- Adha+Summer Vacations:15th June - 21st July,2024						
16th	23-Jul-24	Tue	All Subjects	Lecture	Lecture Time Divided	
	24-Jul-24	Wed	All Subjects	Lecture	Lecture Time Divided	
	26-Jul-24	Fri	Mid Ward Test			
17th	30-Jul-24	Tue	Com.Medicine	Grand Test+ Key Discussion+Viva	Communicable Diseases	CH # 5
	31-Jul-24	Wed	Com.Medicine	OSPE		
		2-Aug-24	Fri	Grand Ward Test-3		

18th	6-Aug-24	Tue	ENT	Grand Test+ Key Discussion+Viva	Ear + Ear Op Sur	Dhingra Chp No. 1-22, 78-83
	7-Aug-24	Wed	ENT	OSPE		
19th	13-Aug-24	Tue	EYE	Grand Test+ Key Discussion+Viva	Lacrimal app, Glaucoma, Squint, Ref Error, Retina	Parson 22nd ed
	14-Aug-24	Wed	Independence Day- 14th Aug,2024			
20th	20-Aug-24	Tue	Sp.Pathology	Grand Test+ Key Discussion+Viva	GT4. MSS, CNS, Skin	Robin's 10th Ed (1171-1239, 1242-1302, 1133-1169)
	21-Aug-24	Wed	Sp.Pathology	OSPE	MSS, CNS, Skin	Robin's 10th Ed (1171-1239, 1242-1302, 1133-1169)
Mid Session Exam: 22nd Aug, 2024- 17th Sep, 2024						
20th	22-Aug-24	Thu	ENT	RT	Nose & PNS, Oral Cavity, Salivary Glands, Op Sur Nose	Dhingra Chp 23-46, 84-90
20th	23-Aug-24	Fri	ENT	RT	Ear + Ear Op Sur	Dhingra Chp No. 1-22, 78-83
			Early Ward Test			
20th	24-Aug-24	Sat	DAY OFF			
21st	25-Aug-24	Sun	DAY OFF			
21st	26-Aug-24	Mon	ENT	MSE	Entire Syllabus Covered	
21st	27-Aug-24	Tue	ENT	OSPE/ Viva		
21st	28-Aug-24	Wed	EYE	RT	Entire Syllabus Covered	
21st	29-Aug-24	Thu	EYE	RT	Entire Syllabus Covered	

21st	30-Aug-24	Fri	DAY OFF			
21st	31-Aug-24	Sat	DAY OFF			
22nd	1-Sep-24	Sun	DAY OFF			
22nd	2-Sep-24	Mon	EYE	MSE	Entire Syllabus Covered	
22nd	3-Sep-24	Tue	EYE	OSPE/ Viva		
22nd	4-Sep-24	Wed	Com.Medicine	RT	Concept of health & disease. PHC & International Health, NCDs	K.Park Pg13- 63, 365-392, 143-152
22nd	5-Sep-24	Thu	Com.Medicine	RT	Epidemiology, Screening, Demography	K.Park 234rd Ed. Ch3, 4 & 8
22nd	6-Sep-24	Fri	Com.Medicine	RT	Communicable Diseases	CH # 5
22nd	7-Sep-24	Sat	DAY OFF			

23rd	8-Sep-24	Sun	DAY OFF			
23rd	9-Sep-24	Mon	Com.Medicine	MSE	All the syllabus covered uptill now	K.PARK CH 2,3,4,5,6,8, 20, 21, 22
23rd	10-Sep-24	Tue	Com.Medicine	OSPE/ Viva		
23rd	11-Sep-24	Wed	Sp.Pathology	RT	OC, GIT, HBS, Skin	Robin's 10th Ed (731-819, 832-879, 1133-1169)
23rd	12-Sep-24	Thu	Sp.Pathology	RT	CVS, Lung, MSS	Robin's 10th Ed (485-582, 673-729, 739-744, 1171-1239)
23rd	13-Sep-24	Fri	Sp.Pathology	RT	Hem, Breast, CNS	Robin's 10th Ed (583-672, 1038-1063, 1242-1302)
23rd	14-Sep-24	Sat	DAY OFF			
24th	15-Sep-24	Sun	DAY OFF			
24th	16-Sep-24	Mon	Sp.Pathology	MSE	Entire Syllabus Covered	Entire Syllabus Covered
24th	17-Sep-24	Tue	Sp.Pathology	OSPE/ Viva		
End Of 2nd Term						



Avicenna Medical College

4th Year MBBS (M-20)

3rd Term Test Schedule

Week	Date	Day	Subject	Test	Topic	Reference
24th	20-Sep-24	Fri	Mid Ward Test			
25th	24-Sep-24	Tue	Com.Medicine	Grand Test+ Key Discussion+Viva	MCH, Nutrition, Research & Bio Stats	L.PARK CH9, 10, 18 & NOTE
	25-Sep-24	Wed	Com.Medicine	OSPE		
	27-Sep-24	Fri	Grand Ward Test-4			
26th	1-Oct-24	Tue	All Subjects	Lecture	Lecture Time Divided	
	2-Oct-24	Wed	All Subjects	Lecture	Lecture Time Divided	
27th	8-Oct-24	Tue	Com.Medicine	Grand Test+ Key Discussion+Viva	Occupational, Environmental & Mental Health, Disaster , Solid & Hospital Waste Management, Health Communication Of Health Education	LAPRK CH 12, 13, 14 15, 17, 1
	9-Oct-24	Wed	Com.Medicine	OSPE		
	11-Oct-24	Fri	Early Ward Test			

28th	15-Oct-24	Tue	Sp.Pathology	Grand Test+ Key Discussion+Viva	GT5.Endo, Kidney	Robin's 10th Ed (881-894, 1066-1131, 896-651)
	16-Oct-24	Wed	Sp.Pathology	OSPE		
	18-Oct-24	Fri	Mid Ward Test			
29th	22-Oct-24	Tue	All Subjects	Lecture	Lecture Time Divided	
	23-Oct-24	Wed	All Subjects	Lecture	Lecture Time Divided	
	25-Oct-24	Fri	Grand Ward Test-5			
30th	29-Oct-24	Tue	Sp.Pathology	Grand Test+ Key Discussion+Viva	GT6.FGT, LUT, MGS	Robin's 10th Ed (986-1035, 953-982)
	30-Oct-24	Wed	Sp.Pathology	OSPE		
31st	5-Nov-24	Tue	ENT	Grand Test+ Key Discussion+Viva	Pharynx, Larynx, Trachea, Esophagus, Recent Advances, Neck Masses, & Throat Surgery	Dhingra 7th ED. Chp No. 47- 65 + 66-75 + 77 + 91-95
	6-Nov-24	Wed	ENT	OSPE		
	8-Nov-24	Fri	Early Ward Test			

32nd	12-Nov-24	Tue	EYE	Grand Test+ Key Discussion+ Viva	Orbit,Neuro ophthalmology,ocular injuries,ocular therapeutics,tumors, instruments	Parson 22nd ed
	13-Nov-24	Wed	EYE	OSPE		
	15-Nov-24	Fri	Mid Ward Test			
33rd	19-Nov-24	Tue	All Subjects	Lecture	Lecture Time Divided	
	20-Nov-24	Wed	All Subjects	Lecture	Lecture Time Divided	
	22-Nov-24	Fri	Grand Ward Test-6			
Send-Up Exam: 25th Nov,2024 - 11th Dec,2024						
34th	25-Nov-24	Mon	Com.Medicine	Send-Up	Entire Syllabus Covered	
34th	26-Nov-24	Tue	DAY OFF			
34th	27-Nov-24	Wed	DAY OFF			
34th	28-Nov-24	Thu	EYE	Send-Up	Entire Syllabus Covered	
34th	29-Nov-24	Fri	DAY OFF			
34th	30-Nov-24	Sat	DAY OFF			
35th	1-Dec-24	Sun	DAY OFF			

35th	2-Dec-24	Mon	Sp.Pathology	Send-Up	Entire Syllabus Covered
35th	3-Dec-24	Tue	DAY OFF		
35th	4-Dec-24	Wed	DAY OFF		
35th	5-Dec-24	Thu	ENT	Send-Up	Entire Syllabus Covered
35th	6-Dec-24	Fri	OSPE/ Viva		
36th	7-Dec-24	Sat	DAY OFF		
37th	8-Dec-24	Sun	DAY OFF		
37th	9-Dec-24	Mon	OSPE/ Viva		
37th	10-Dec-24	Tue	OSPE/ Viva		
37th	11-Dec-24	Wed	OSPE/ Viva		
37th	12-Dec-24	Thu	Final Clinical Assessment		
37th	13-Dec-24	Fri	Final Clinical Assessment		
37th	14-Dec-24	Sat	DAY OFF		
38th	15-Dec-24	Sun	DAY OFF		

38th	16-Dec-24	Mon	Final Clinical Assessment
38th	17-Dec-24	Tue	Final Clinical Assessment
38th	18-Dec-24	Wed	Final Clinical Assessment
38th	19-Dec-24	Thu	Final Clinical Assessment
End Of 3rd Term			

